

LRS

LASSLE RANCH SIMMENTALS



32ND ANNUAL BULL SALE

FEBRUARY 13, 2025 // 1:00 PM MST // AT THE RANCH // GLENDIVE, MT

LASSLE RANCH SIMMENTALS

Welcome!

Welcome to our 32nd annual production sale. We continue to be humbled and blessed by the support that we have received over the last 31 years. We value the friendships that have been made, they mean the world to us. The trust you have put in our genetics to keep your operations on the right track is what keeps us focused year after year to ensure we are providing the next generation of genetics that will keep your operations viable in the future.

Whatever tag line you want to use, from maternal to well balanced, these bulls are backed by a set of real-world cows that have stood the test of time for over 40 years and carry the LRS prefix for generations and generations. We expect these cows to work for us, just like your operations at home, and place a high emphasis on udders, feet, disposition, structure, fleshing ability, mothering ability, and fertility. Whether you want to call these convenience traits or use another name, they have the greatest effect on profitability in the cow calf industry and they are valued in our operation. We take these "cowboy" traits and blend them with all the science available to offer these bulls for your appraisal.

We were honored to be one of 39 herds in America recognized by the American Simmental Association in 2024 as a performance advocate. The ASA has been recognizing herds for the past 15 years who maintain a commitment to reporting data. This real phenotypic data combined with every animal having genomically enhanced EPD's, utilizing tools like RightMate and RightChoice, allows us to offer these bulls with the most accurate and up to date information to make your genetic selections. Nothing is guaranteed, but we try to take as much of the guesswork out of it for you.

The weather sure cooperated during calving last spring, as there is barely a short ear in the pens, but unfortunately it carried over into summer in our part of the world and once again we faced challenges with a lack of rain, and a big crop of grasshoppers. The cows did an outstanding job and showed us they can continue to thrive in the challenges they face out on the range. Breed up this fall was good, and they came home in good condition. The markets are at levels we have not experienced before, and we are hopeful they can stay this way for the years to come. It sure is an exciting time to be in the cattle business.

It has been a few years since we have offered some females for sale. After a couple years of trying to grow the herd to our current numbers, we can let some go. We don't like to sell females, but we can't keep them all and bred some extra heifers this past spring knowing that if the breed up was good on the cowherd, we would be able to offer some in this sale. Whether you are a commercial producer looking for a small group of bred heifers for your herd, or a purebred breeder looking for right genetic piece, we hope there is something in this group that will fit your program.

We hope you can be with us on February 13th but know that sometimes that is not possible. Once again, we will be utilizing DVAuction.com as our online platform and all bulls and females will have videos posted there ahead of the sale.

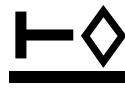
In closing, thank you for your support of our program for the last 31 years. The ranch doors are always open to view the bulls and the cowherd behind them. We do offer a \$250 sale credit to view the bulls ahead of the sale. If you have any questions, please do not hesitate to give us a call. We look forward to seeing you on the 13th!

Clay and Marianne Lassle
Ryan, Sarah, Grace, and Harper Thorson



LRS

LASSLE RANCH SIMMENTALS



FEBRUARY 13, 2025 // 1:00 PM MST AT THE RANCH // GLENDIVE, MT

CONTACT INFORMATION

Clay & Marianne Lassle
42 Road 245 | Glendive, MT 59330
Home 406-486-5584 | lrsbeef@midrivers.com
Sarah & Ryan Thorson 406-694-3722

SALE SCHEDULE & LOCATION

Thursday, February 13, 2025 | 1:00 PM MST
At the Ranch - Glendive, MT
Sale barn address: 42 Road 245 Glendive, MT 59330
Lunch Served 11:30 a.m. MST
Sale Time.....1:00 p.m. MST

SALE DAY PHONE NUMBERS

Clay Lassle, cell406-939-1348
Ryan Thorson, cell.....406-694-3722
Sarah Thorson, cell.....406-694-3760
Lassle Sale Barn.....406-486-5585

SALE REPRESENTATIVES

Jeff Thomas, *The Prairie Star/Farm and Ranch Guide*406-581-8859
Rocky Forseth, *Allied Genetic Resources*406-590-7984
John Goggins, *Western Ag Reporter*406-698-4159
Devin Murnin, *Western Livestock Journal*406-696-1502
Andy Roberts, *ASA SimSpecialist*.....406-852-4387

AUCTIONEER

Roger Jacobs, Billings, MT406-698-7686

AREA MOTELS

LaQuinta Inn & Suites406-377-7300
Astoria Inn of Glendive406-377-6000
Yellowstone River Inn.....406-377-4433
Holiday Inn Express406-377-3300

EPD DATA

EPDs are current as of January 7, 2025. View the current EPDs online at herdbook.org

SALE DIRECTIONS

Going west on I-94 out of Glendive – 18 miles

- Take Exit 198 – Crackerbox Exit – Turn left off interstate, go 1/4 mile
- Take a right onto CR 261 go 2 1/2 miles there will be 5 mailboxes and a Lassle sign
- Turn left onto Road 245 go 1/4 mile you will see another Lassle sign as you enter the yard.

Going east on I-94 from Miles City

- Take exit 192 – Bad Route Rest Area – turn right off interstate go 1/2 - 3/4 mile
- Turn left onto CR 261
- Go approximately 3 miles to group of mailboxes with Lassle sign
- Turn right onto road 245 go 1/4 mile you will see another Lassle sign as you enter the yard

ABSENTEE BIDDING OPTIONS

SIGHT UNSEEN PURCHASE GUARANTEE!

Be on the Phone

If you would like to be on the phone with one someone during the sale, call one of the sale day phone numbers and we will make arrangements.

Leave us your Order

Call and visit with Ryan, Clay or one of our Sale Representatives ahead of the sale and leave your order with them. Your order will be handled with respect and confidentiality.

ONLINE BIDDING WITH DVAUCTION

Sale Broadcasted Live on DVAuction
www.dvauction.com // 402-316-5460

*Find more details on how to view & bid with DVAuction on page 32



To view bull videos scan QR code or visit dvauction.com



LASSLE RANCH SIMMENTALS

Full Brothers
Lots 1-3



Lot 1



Lot 2



Lot 3

Lots 1-3. Once again we start the sale with a set of bulls out of the 983G cow. She continues to set the pace for combining high genetic merit and awesome Phenotype in her progeny. Everyone loves the big growth predictions, but this set of sons don't miss a beat when it comes to great stayability and docility, but also great marbling and REA. Who says you can't have it all!

LRS 838M



BD: 3/6/24 • ASA#: 4359501 • Tattoo: 838M
PB SM • Homozygous Polled • Homozygous Black

sire: HA COVENANT 30K
HOOK'S GALILEO 210G
HOOK'S CERES 11C
HOOK'S EAGLE 6E
dam: LRS MS EAGLE 983G
LRS MS CLASS ACT 437B

Act. BW	84
BW Ratio	ET
Adj WW	784
WW Ratio	ET
Adj YW	1226
YW Ratio	ET
WDA	3.53
ADG	2.79
Adj SC	37.2

Rank	CE	BW	WW	YW	ADG	MCE	Milk	STAY	DOC	CW	Marb	BF	REA	API	TI
16.0	-1.2	86.4	139.4	0.33	8.5	23.4	22.1	17.9	38.4	0.47	-0.047	0.95	177.6	96.4	
10	15	25	15	10	15	50	2	3	20	15	95	35	3	10	

LRS 8008M



BD: 3/9/24 • ASA#: 4359598 • Tattoo: 8008M
PB SM • Homozygous Polled • Homozygous Black

sire: HA COVENANT 30K
HOOK'S GALILEO 210G
HOOK'S CERES 11C
HOOK'S EAGLE 6E
dam: LRS MS EAGLE 983G
LRS MS CLASS ACT 437B

Act. BW	90
BW Ratio	ET
Adj WW	755
WW Ratio	ET
Adj YW	1245
YW Ratio	ET
WDA	3.53
ADG	3.09
Adj SC	37.3

Rank	CE	BW	WW	YW	ADG	MCE	Milk	STAY	DOC	CW	Marb	BF	REA	API	TI
13.1	2.5	102.7	156.0	0.33	6.5	23.4	17.3	14.4	46.8	0.38	-0.088	1.24	158.3	99.4	
30	80	2	2	10	40	50	30	20	10	20	30	3	15	4	

LRS 741M



BD: 3/1/24 • ASA#: 4359489 • Tattoo: 741M
PB SM • Homozygous Polled • Homozygous Black

sire: HA COVENANT 30K
HOOK'S GALILEO 210G
HOOK'S CERES 11C
HOOK'S EAGLE 6E
dam: LRS MS EAGLE 983G
LRS MS CLASS ACT 437B

Act. BW	90
BW Ratio	ET
Adj WW	708
WW Ratio	ET
Adj YW	1223
YW Ratio	ET
WDA	3.40
ADG	3.24
Adj SC	35.9

Rank	CE	BW	WW	YW	ADG	MCE	Milk	STAY	DOC	CW	Marb	BF	REA	API	TI
10.2	3.2	111.6	178.0	0.41	4.5	23.4	17.4	17.2	71.4	0.53	-0.053	1.05	165.7	106.7	
70	90	1	1	1	75	50	30	5	1	10	85	20	10	1	



Lot 4



Lot 5

Full Brothers
Lots 4-7



Lot 6



Lot 7

Lots 4-7. The 0142H cow is another rising star in our herd and from another one of our great cow families tracing back to the 303A and 447P matrons. This set of brothers could easily have led off the catalog as well. Sired by LRS Ranger, a son of the 983G cow, these brothers will impress you when you get a chance to lay eyes on them and wonder when did purebred bulls start looking like this. Pure power bulls from a great line of maternal matriarchs in our herd. These bulls are right for the times

4 LRS 943M

BD: 3/3/24 • ASA#: 4359513 • Tattoo: 943M
PB SM • Homozygous Polled • Homozygous Black

GIBBS 7382E BROAD RANGE

sire: **LRS RANGER 445K**
LRS MS EAGLE 983G
NLC GEN TEN 82E

dam: **LRS MS CLEO 0142H**
LRS MS TOPGRADE 303A

Act. BW	88
BW Ratio	ET
Adj WW	640
WW Ratio	ET
Adj YW	1343
YW Ratio	ET
WDA	3.54
ADG	4.41
Adj SC	37.5

Rank	CE	BW	WW	YW	ADG	MCE	Milk	STAY	DOC	CW	Marb	BF	REA	API	TI
EPDs	12.3	1.1	95.4	158.1	0.39	5.9	22.3	15.7	16.4	53.6	0.29	-0.025	1.08	150.0	93.9
Rank	40	50	10	2	1	50	60	50	10	2	30	99	15	25	10

5 LRS 883M

BD: 3/5/24 • ASA#: 4359626 • Tattoo: 883M
PB SM • Homozygous Polled • Homozygous Black

GIBBS 7382E BROAD RANGE

sire: **LRS RANGER 445K**
LRS MS EAGLE 983G
NLC GEN TEN 82E

dam: **LRS MS CLEO 0142H**
LRS MS TOPGRADE 303A

Act. BW	82
BW Ratio	ET
Adj WW	863
WW Ratio	ET
Adj YW	1323
YW Ratio	ET
WDA	3.82
ADG	2.89
Adj SC	37.6

Rank	CE	BW	WW	YW	ADG	MCE	Milk	STAY	DOC	CW	Marb	BF	REA	API	TI
EPDs	10.4	2.6	94.6	152.0	0.36	4.6	22.3	12.9	17.2	49.2	0.45	-0.050	1.00	147.0	95.3
Rank	65	80	10	4	3	75	60	80	5	5	15	95	25	30	10

6 LRS 609M

BD: 3/8/24 • ASA#: 4359481 • Tattoo: 609M
PB SM • Homozygous Polled • Homozygous Black

GIBBS 7382E BROAD RANGE

sire: **LRS RANGER 445K**
LRS MS EAGLE 983G
NLC GEN TEN 82E

dam: **LRS MS CLEO 0142H**
LRS MS TOPGRADE 303A

Act. BW	82
BW Ratio	ET
Adj WW	658
WW Ratio	ET
Adj YW	1191
YW Ratio	ET
WDA	3.28
ADG	3.35
Adj SC	38.3

Rank	CE	BW	WW	YW	ADG	MCE	Milk	STAY	DOC	CW	Marb	BF	REA	API	TI
EPDs	10.3	0.8	90.3	143.6	0.33	4.5	22.3	16.6	17.7	45.3	0.39	-0.042	0.94	152.4	93.3
Rank	70	40	15	10	10	75	60	40	3	10	20	95	35	20	15

7 LRS 9142M

BD: 3/14/24 • ASA#: 4359606 • Tattoo: 9142M
PB SM • Homozygous Polled • Homozygous Black

GIBBS 7382E BROAD RANGE

sire: **LRS RANGER 445K**
LRS MS EAGLE 983G
NLC GEN TEN 82E

dam: **LRS MS CLEO 0142H**
LRS MS TOPGRADE 303A

Act. BW	90
BW Ratio	ET
Adj WW	643
WW Ratio	ET
Adj YW	1253
YW Ratio	ET
WDA	3.40
ADG	3.83
Adj SC	35.6

Rank	CE	BW	WW	YW	ADG	MCE	Milk	STAY	DOC	CW	Marb	BF	REA	API	TI
EPDs	11.5	0.5	84.6	133.4	0.31	4.9	22.3	18.3	14.5	43.3	0.41	-0.026	0.93	155.9	90.4
Rank	50	35	25	20	15	70	60	20	20	10	15	99	40	20	20

LASSLE RANCH SIMMENTALS



Lot 8



Lot 9

Full Brothers Lots 8-9

Lots 8 and 9. We only got 2 of these flush brothers sired by Bedrock, who was the top selling bull in the 2023 Cow Camp sale and I wish I had a pen full of them. Study the data, study the bulls and you are sure to have stars all over these two studs. Use them on purebred cows to make purebreds or use them on your 1/2 blood cows, they are sure to leave a positive impact.

8

LRS 9161M

BD: 3/9/24 • ASA#: 4359611 • Tattoo: 9161M
3/4 SM 1/4 AN • Homozygous Polled • Homozygous Black

TEHAMA PATRIARCH F028

sire: CCR BEDROCK 5171J

CCR MS 2073 COWBOY 5171C

HOOK'S EAGLE 6E

dam: LRS MS EAGLE 983G

LRS MS CLASS ACT 437B



Act. BW	90
BW Ratio	ET
Adj WW	697
WW Ratio	ET
Adj YW	1245
YW Ratio	ET
WDA	3.46
ADG	3.46
Adj SC	37.3

Rank	CE	BW	WW	YW	ADG	MCE	Milk	STAY	DOC	CW	Marb	BF	REA	API	TI
	13.3	-1.9	86.8	142.8	0.35	6.4	24.3	18.6	14.5	45.4	0.58	-0.023	0.73	162.0	94.9
45	20	15	10	10	60	50	15	25	20	20	70	45	10	10	

9

LRS 9145M

BD: 3/5/24 • ASA#: 4359607 • Tattoo: 9145M
3/4 SM 1/4 AN • Homozygous Polled • Homozygous Black

TEHAMA PATRIARCH F028

sire: CCR BEDROCK 5171J

CCR MS 2073 COWBOY 5171C

HOOK'S EAGLE 6E

dam: LRS MS EAGLE 983G

LRS MS CLASS ACT 437B



Act. BW	84
BW Ratio	ET
Adj WW	651
WW Ratio	ET
Adj YW	1165
YW Ratio	ET
WDA	3.23
ADG	3.24
Adj SC	39.1

Rank	CE	BW	WW	YW	ADG	MCE	Milk	STAY	DOC	CW	Marb	BF	REA	API	TI
	14.5	-2.1	83.1	131.7	0.30	7.1	24.3	18.9	16.8	42.6	0.57	-0.034	0.76	162.0	92.8
30	20	25	25	30	50	50	10	10	25	25	55	40	10	15	

LRS 217M

10

BD: 3/9/24 • ASA#: 4359361 • Tattoo: 217M
5/8 SM 3/8 AN • Homozygous Polled • Homozygous Black

CCR POUNDER 2045F

sire: CCR VARSITY 4112H

CCR MS FRONTIER 4112B

GIBBS 7382E BROAD RANGE

dam: LRS MS OPAL 217K

LRS MS EMERALD 059H

Act. BW	82
BW Ratio	103
Adj WW	719
WW Ratio	109
Adj YW	1316
YW Ratio	110
WDA	3.43
ADG	3.78
Adj SC	41.3



Lot 10

Rank	CE	BW	WW	YW	ADG	MCE	Milk	STAY	DOC	CW	Marb	BF	REA	API	TI
	12.7	-1.4	87.8	143.7	0.35	7.9	29.0	19.4	16.6	53.9	0.31	-0.029	0.58	147.6	88.4
50	25	15	10	10	35	15	10	10	10	60	70	70	30	30	25

Dam is one of Grace's first calf heifers and she did a whale of a job. His Granddam is the 059H cow who is one of my favorites in the herd with a super feminine design and perfect udder. Ratioed 109 at weaning, 110 at a year and a big set of nuts under him. Grab a hold of the rope and keep every daughter.

LRS 884M

11

BD: 3/9/24 • ASA#: 4359504 • Tattoo: 884M
3/4 SM 1/4 AN • Homozygous Polled • Homozygous Black

GIBBS 7382E BROAD RANGE

sire: LRS RANGER 445K

LRS MS EAGLE 983G

CONNELLY CAPITALIST 028

dam: LRS MS CAPITALIST 884F

LRS MS TURNINGPOINT 576C

Act. BW	94
BW Ratio	110
Adj WW	699
WW Ratio	110
Adj YW	1208
YW Ratio	103
WDA	3.45
ADG	3.21
Adj SC	38.3



LRS 245M

12

BD: 2/27/24 • ASA#: 4359367 • Tattoo: 245M
3/4 SM 1/4 AN • Homozygous Polled • Homozygous Black

HOOK'S GALILEO 210G

sire: HA COVENANT 30K

HOOK'S CERES 11C

TJ FLAT IRON 259G

dam: LRS MS FLAT IRON 245K

LRS MS TEN X 401B

Act. BW	96
BW Ratio	120
Adj WW	685
WW Ratio	103
Adj YW	1264
YW Ratio	106
WDA	3.26
ADG	3.67
Adj SC	35.2



Rank	CE	BW	WW	YW	ADG	MCE	Milk	STAY	DOC	CW	Marb	BF	REA	API	TI
	8.4	2.9	98.9	154.9	0.35	5.1	26.1	13.7	13.7	64.6	0.74	-0.065	0.94	150.6	100.1
95	95	2	3	10	80	35	65	35	2	10	20	15	25	3	

Another first calf heifer who did a great job. Covenant is a new sire for us we used as an outcross pedigree. Big square hip and plenty of growth. Put him on a set of cows and take advantage of the added payweight.

LRS G47M

13

BD: 3/11/24 • ASA#: 4359329 • Tattoo: G47M
1/2 SM 1/2 AN • Homozygous Polled • Homozygous Black

G A R BIG STEP K715

sire: EZAR STEP UP 9178

BASIN LUCY 4261

LRS CLASS ACT 606Z

dam: LRS MS CLASS ACT 437B

LRS MS OLIE 078X

Act. BW	88
BW Ratio	ET
Adj WW	710
WW Ratio	ET
Adj YW	1306
YW Ratio	ET
WDA	3.64
ADG	3.78
Adj SC	40.5



Lot 13

Rank	CE	BW	WW	YW	ADG	MCE	Milk	STAY	DOC	CW	Marb	BF	REA	API	TI
	11.4	2.3	99.5	175.7	0.48	9.1	26.1	16.1	14.9	51.0	0.61	-0.020	1.01	157.2	99.6
70	90	2	1	1	20	35	35	20	10	20	85	10	15	3	

The very last animal born out of the legend 437B cow who is also the dam of 983G. Her number is retired here, and her ear tag hangs in my office. Step up offers a new outcross angus pedigree for our half blood bulls. Over 700 lbs at weaning and 1300 lbs at a year and big testicles, he will add performance, but even more he is great for stayability, Docility, Carcass traits, and high indexing.

LRS 725M

14

BD: 3/5/24 • ASA#: 4359486 • Tattoo: 725M
PB SM • Homozygous Polled • Homozygous Black

GIBBS 7382E BROAD RANGE

sire: LRS RANGER 445K

LRS MS EAGLE 983G

LRS ELEVATE 213B

dam: LRS MS ELEVATE 725E

LRS MS TURNINGPOINT 544C

Act. BW	88
BW Ratio	102
Adj WW	689
WW Ratio	109
Adj YW	1107
YW Ratio	95
WDA	3.20
ADG	2.63
Adj SC	37.1



Lot 14

Rank	CE	BW	WW	YW	ADG	MCE	Milk	STAY	DOC	CW	Marb	BF	REA	API	TI
	8.6	0.7	88.7	130.4	0.26	4.4	22.2	10.6	11.1	46.1	0.16	-0.057	1.40	123.5	86.2
85	40	15	25	40	80	60	95	60	10	55	85	1	70	30	

Standout in the pen with his build and design, these LRS Ranger calves are sure a highlight of the offering. Ranger sold to Nelson's in 2023 as part of a great set of brothers. We always liked him and he did not get as much attention due to a poor recip, but we are sure glad we took the opportunity to use him based on his first calf crop. The Heifer calves look great too.

LASSLE RANCH SIMMENTALS

LOT COLOR CODES



UNDERSTANDING LOT NUMBER COLOR CODES

- Green Ear Tags Purebred Simmental
- Blue Ear Tags 3/4 Simmental
- Yellow Ear Tags 5/8 or 1/2 Simmental
- White Ear Tags 3/8 Simmental

LRS 739M



BD: 3/10/24 • ASA#: 4359488 • Tattoo: 739M
5/8 SM 3/8 AN • Homozygous Polled • Homozygous Black

CCR POUNDER 2045F

sire: CCR NATIONWIDE 4503J

CCR MS NATIONAL 4503B

LRS ICONIC 303C

dam: LRS MS ICONIC 739E

LRS MS ROBUST 434B



Act. BW	96
BW Ratio	112
Adj WW	671
WW Ratio	106
Adj YW	1282
YW Ratio	110
WDA	3.54
ADG	3.84
Adj SC	34.4

Rank	CE	BW	WW	YW	ADG	MCE	Milk	STAY	DOC	CW	Marb	BF	REA	API	TI
8.9	3.8	104.7	167.7	0.39	5.1	24.6	14.8	15.0	41.0	0.54	-0.043	0.66	143.8	97.4	
90	99	1	1	2	80	45	50	20	30	25	45	55	35	5	

Soggy made Nationwide son who is has been really performing since birth ratioing 106 off the cow and has turned it on even more in the pens gaining 3.84 lbs/day to ratio 110 at a year.

LRS 814M



BD: 3/10/24 • ASA#: 4359624 • Tattoo: 814M
3/4 SM 1/4 AN • Homozygous Polled • Homozygous Black

GIBBS 7382E BROAD RANGE

sire: LRS RANGER 445K

LRS MS EAGLE 983G

MCCONNELL ALTITUDE 3114

dam: LRS MS BAILEY 814F

LRS MS ELEVATE 6021D



Act. BW	88
BW Ratio	102
Adj WW	729
WW Ratio	108
Adj YW	1356
YW Ratio	115
WDA	3.78
ADG	3.95
Adj SC	38.9

Rank	CE	BW	WW	YW	ADG	MCE	Milk	STAY	DOC	CW	Marb	BF	REA	API	TI
11.4	1.4	100.1	166.5	0.41	6.2	24.2	15.5	18.5	70.8	0.60	-0.008	1.29	155.2	99.7	
70	75	2	1	1	65	50	45	3	1	20	90	1	20	3	

Want Length and extension and some high growth - he will fit the bill. Out of Grace's favorite cow who always has a bull making the sale, this one might be her best yet.

LRS 328M



BD: 2/2/24 • ASA#: 4359385 • Tattoo: 328M
1/2 SM 1/2 AN • Homozygous Polled • Homozygous Black

G A R BIG STEP K715

sire: EZAR STEP UP 9178

BASIN LUCY 4261

LRS TIMTRAVELER 37X

dam: LRS MS TIMTRAVELER 328A

LRS MS LIMELIGHT 9015W



Act. BW	92
BW Ratio	107
Adj WW	726
WW Ratio	102
Adj YW	1149
YW Ratio	105
WDA	3.27
ADG	2.68
Adj SC	37.4

Rank	CE	BW	WW	YW	ADG	MCE	Milk	STAY	DOC	CW	Marb	BF	REA	API	TI
8.8	1.9	87.2	140.7	0.33	9.1	26.4	12.7	15.7	57.3	0.51	-0.005	0.72	132.7	87.7	
90	85	15	15	15	20	30	75	15	4	30	90	45	55	30	

Really an outcross pedigree in the mating going back to the 328C cow and out of Step up. His dam we did sell this last year at 11 years old and stood the test of time in our program producing many sons throughout the years.

LRS 956M



BD: 3/3/24 • ASA#: 4359515 • Tattoo: 956M
PB SM • Homozygous Polled • Homozygous Black

GIBBS 7382E BROAD RANGE

sire: LRS RANGER 445K

LRS MS EAGLE 983G

HOOK'S BALTIC 17B

dam: LRS MS BALTIC 956G

LRS MS DUAL FOCUS 213Z



Act. BW	86
BW Ratio	101
Adj WW	676
WW Ratio	103
Adj YW	1327
YW Ratio	109
WDA	3.58
ADG	4.10
Adj SC	40.5

Rank	CE	BW	WW	YW	ADG	MCE	Milk	STAY	DOC	CW	Marb	BF	REA	API	TI
11.7	-0.4	82.9	135.3	0.33	4.6	19.6	16.6	13.2	41.1	0.21	-0.016	1.14	143.5	85.6	
50	20	30	20	10	75	80	40	35	15	45	99	10	35	30	

Gaining over 4 lbs a day on test and over 1300 lb yearling weight all while having the same big testicles, great look, and structure that we are seeing in these Ranger calves.



LRS 286M



BD: 2/25/24 • ASA#: 4359382 • Tattoo: 286M
3/4 SM 1/4 AN • Homozygous Polled • Homozygous Black

HOOK'S GALILEO 210G

sire: HA COVENANT 30K

HOOK'S CERES 11C

MCCONNELL ALTITUDE 3114

dam: LRS MS ALTITUDE 286K

LRS MS TOPGRADE 3021A



Act. BW	90
BW Ratio	113
Adj WW	716
WW Ratio	108
Adj YW	1345
YW Ratio	112
WDA	3.48
ADG	3.99
Adj SC	36.6

Rank	CE	BW	WW	YW	ADG	MCE	Milk	STAY	DOC	CW	Marb	BF	REA	API	TI
7.5	2.1	96.3	150.7	0.34	1.9	26.3	16.3	13.7	50.0	0.68	-0.055	1.15	152.4	98.3	
95	85	3	5	10	99	30	35	35	10	15	30	3	20	4	

Use these Covenant sons to add some power and extension to your calf crop. Ratioed 108 at weaning out of a first calf heifer and kept on going to 1345 lbs at a year to ratio 112.



20

LRS 050M

BD: 2/27/24 • ASA#: 4359330 • Tattoo: 050M
3/4 SM 1/4 AN • Homozygous Polled • Homozygous Black

TEHAMA TAHOE B767
sire: **LRS RARITY 983J**
LRS MS EAGLE 983G
WS PROCLAMATION E202
dam: **LRS MS PROCLAMATION 050H**
LRS MS ELEVATE 6033D



Act. BW	82
BW Ratio	98
Adj WW	652
WW Ratio	103
Adj YW	1151
YW Ratio	98
WDA	3.16
ADG	3.16
Adj SC	36.7

Rank	CE	BW	WW	YW	ADG	MCE	Milk	STAY	DOC	CW	Marb	BF	REA	API	TI
	12.0	-1.2	86.0	138.3	0.33	5.7	24.8	19.6	17.6	45.3	0.45	-0.035	0.59	153.0	89.9
60	30	20	15	15	70	45	10	10	20	40	55	70	20	20	

Great Stayability and docility in the Rarity son whose dam is a full sister to a set of flush brothers that averaged over \$10,000 a few years back. His dam is averaging 104 for YW on her first 3 calves.

22

LRS 1165M

BD: 3/12/24 • ASA#: 4359629 • Tattoo: 1165M
1/2 SM 1/2 AN • Homozygous Polled • Homozygous Black

TEHAMA TAHOE B767
sire: **LRS RARITY 983J**
LRS MS EAGLE 983G
LRS 7122G
dam: **CBL MS FAITH 1165J**
CBL MS. TOP GRADE A163



Act. BW	90
BW Ratio	102
Adj WW	726
WW Ratio	107
Adj YW	1188
YW Ratio	105
WDA	3.29
ADG	2.93
Adj SC	36.5

Rank	CE	BW	WW	YW	ADG	MCE	Milk	STAY	DOC	CW	Marb	BF	REA	API	TI
	10.8	1.9	91.4	143.1	0.32	5.6	27.7	16.6	14.1	52.7	0.56	-0.034	0.58	147.2	92.0
75	85	10	10	20	75	20	30	30	10	25	55	70	30	15	

Harper's first bull in the catalog out of her cow Faith and this Rarity son has been really good since he was born. Check out his 107 WW ratio and 105 YW ratio. She is not a big cow, but she sure does a nice job.

23

LRS 293M

BD: 2/25/24 • ASA#: 4359383 • Tattoo: 293M
1/2 SM 1/2 AN • Homozygous Polled • Homozygous Black

TEHAMA PATRIARCH F028
sire: **CCR BEDROCK 5171J**
CCR MS 2073 COWBOY 5171C
LRS TOPSHELF 902F
dam: **LRS MS TOPSHELF 293K**
LRS MS CAPITALIST 836F



Act. BW	86
BW Ratio	108
Adj WW	688
WW Ratio	104
Adj YW	1309
YW Ratio	109
WDA	3.33
ADG	3.94
Adj SC	37.1

Rank	CE	BW	WW	YW	ADG	MCE	Milk	STAY	DOC	CW	Marb	BF	REA	API	TI
	13.2	1.6	96.8	161.2	0.40	7.9	25.0	16.6	16.1	55.6	0.64	-0.020	0.75	159.3	98.3
45	80	3	2	2	35	45	30	15	5	15	85	40	15	4	

Over 1300 lbs at a year and out of a really productive first calf heifer sired by Top Shelf weaned him off well over 50% of her body weight.

24

LRS 184M

BD: 3/17/24 • ASA#: 4359354 • Tattoo: 184M
5/8 SM 3/8 AN • Homozygous Polled • Homozygous Black

TEHAMA PATRIARCH F028
sire: **CCR BEDROCK 5171J**
CCR MS 2073 COWBOY 5171C
LRS TOPSHELF 902F
dam: **LRS MS TOP SHELF 184J**
LRS MS SUREFIRE 429B



Act. BW	86
BW Ratio	105
Adj WW	707
WW Ratio	107
Adj YW	1220
YW Ratio	106
WDA	3.35
ADG	3.24
Adj SC	37.8

Rank	CE	BW	WW	YW	ADG	MCE	Milk	STAY	DOC	CW	Marb	BF	REA	API	TI
	10.8	1.5	91.2	144.4	0.33	6.8	24.5	17.4	13.8	52.2	0.54	-0.016	0.83	149.0	91.8
75	80	10	10	15	55	45	25	35	10	25	85	25	25	15	

His young dam is off to a great start ratioing 110 at weaning on her first two calves. Another cow sired by Top Shelf who did a great job for us.

21

LRS 061M

BD: 3/4/24 • ASA#: 4359332 • Tattoo: 061M
1/2 SM 1/2 AN • Homozygous Polled • Homozygous Black

G A R BIG STEP K715
sire: **EZAR STEP UP 9178**
BASIN LUCY 4261
NLC GEN TEN 82E
dam: **LRS MS GEN TEN 061H**
LRS MS DUAL FOCUS 213Z



Act. BW	82
BW Ratio	97
Adj WW	632
WW Ratio	100
Adj YW	1003
YW Ratio	86
WDA	2.87
ADG	2.37
Adj SC	39.6

Rank	CE	BW	WW	YW	ADG	MCE	Milk	STAY	DOC	CW	Marb	BF	REA	API	TI
	14.6	0.1	83.6	128.9	0.28	12.0	24.9	17.2	11.2	42.9	0.55	0.040	0.77	152.1	88.9
30	50	25	30	40	2	45	25	70	25	25	99	35	25	25	

Balanced genetics with his G+ ranking and top 25% API ranking. The Step up calves are all good scrotaled and have great feet quality.



GRACE & HARPER HAD A VERY SUCCESSFUL SHOWING AT THE JSA WESTERN REGIONALS



\$250 SALE CREDIT

STOP BY THE RANCH AND VIEW THE BULLS BEFORE SALE DAY TO RECEIVE A \$250 SALE CREDIT AT OUR 2025 BULL SALE.

LASSLE RANCH SIMMENTALS

LRS 793M

25

BD: 3/12/24 • ASA#: 4359495 • Tattoo: 793M
PB SM • Homozygous Polled • Homozygous Black

GIBBS 7382E BROAD RANGE

sire: **LRS RANGER 445K**

LRS MS EAGLE 983G

3324A

dam: **LRS MS 3324-793E**

LRS MS ROMEO 296Z

Act. BW	84
BW Ratio	98
Adj WW	670
WW Ratio	102
Adj YW	1136
YW Ratio	93
WDA	3.21
ADG	2.93
Adj SC	38.5

Rank	CE	BW	WW	YW	ADG	MCE	Milk	STAY	DOC	CW	Marb	BF	REA	API	TI
EPDs	10.7	-0.5	78.3	118.3	0.25	6.3	25.6	19.4	16.9	21.4	0.19	-0.055	1.00	144.1	82.9
	65	20	50	45	50	45	30	10	10	75	45	85	25	30	40

Her only other bull calf made the sale years ago, and every daughter has been retained through the replacement pen. It should not be a surprise this bull has a great stayability ranking. His dam is a nice made 1300 lb cow and this mating with Ranger really clicked.

LRS 893M

26

BD: 3/6/24 • ASA#: 4359507 • Tattoo: 893M
3/4 SM 1/4 AN • Homozygous Polled • Homozygous Black

ASR AMERICAN PATRIOT F843

sire: **ASR AMERICAN PROUD H0301**

ASR LITTLE DESI D6273

CCR PAYDAY 0320C

dam: **LRS MS PAYDAY 893F**

LRS FULL POWER 518C



Act. BW	82
BW Ratio	95
Adj WW	602
WW Ratio	95
Adj YW	1204
YW Ratio	103
WDA	3.28
ADG	3.79
Adj SC	39.7

Rank	CE	BW	WW	YW	ADG	MCE	Milk	STAY	DOC	CW	Marb	BF	REA	API	TI
EPDs	12.0	-1.3	83.7	131.7	0.30	5.9	19.5	19.9	14.3	34.2	0.44	-0.004	0.67	151.9	87.8
	60	30	25	25	30	70	85	5	30	45	40	90	55	25	30

G+ rating and has really been coming on during test to ratio 103 at a year. Dam breeds up early every year maintaining a 358 day calving interval on her 5 calves.

LRS CBL 16M

27

BD: 3/12/24 • ASA#: 4426653 • Tattoo: 16M
1/2 SM 1/2 AN • Polled • Homozygous Black

HOOK'S EAGLE 6E

sire: **LRS FALCON 442G**

LRS MS CLASS ACT 437B

OPP ARSENAL 550

dam: **CBA MS ARSENAL E578**

CBA MS TEN X B74



Act. BW	74
BW Ratio	91
Adj WW	654
WW Ratio	104
Adj YW	1222
YW Ratio	111
WDA	3.36
ADG	3.59
Adj SC	38.5

Rank	CE	BW	WW	YW	ADG	MCE	Milk	STAY	DOC	CW	Marb	BF	REA	API	TI
EPDs	15.5	0.2	93.3	163.1	0.44	8.3	28.5	20.6	15.2	61.2	0.54	-0.023	1.07	168.3	97.1
	20	55	10	1	1	30	20	3	20	3	25	70	5	10	10

Excellent genetic predictions and a full brother to this bull was a top seller a couple years ago for \$12,000. Ratioed 111 for yearling, he is coming on after a tough summer competing with the grasshoppers.

LRS 8011M

28

BD: 3/16/24 • ASA#: 4359600 • Tattoo: 8011M
5/8 SM 3/8 AN • Homozygous Polled • Homozygous Black

CCR POUNDER 2045F

sire: **CCR PRIME TIME 6477H**

CCR MS 3370 BOLDR 6477D

BDV PROGRESSIVE 83D

dam: **LRS MS PREMIUM 8011F**

LRS MS FULL POWER 521C



Act. BW	88
BW Ratio	102
Adj WW	662
WW Ratio	101
Adj YW	1466
YW Ratio	120
WDA	3.91
ADG	5.05
Adj SC	39.2

Rank	CE	BW	WW	YW	ADG	MCE	Milk	STAY	DOC	CW	Marb	BF	REA	API	TI
EPDs	13.6	1.7	88.4	143.8	0.35	7.6	27.9	15.8	17.3	43.2	0.31	-0.027	0.36	135.7	84.7
	40	80	15	10	10	40	20	40	10	25	60	70	95	50	40

Can't miss this calf in the pens. Sired by a pounder son we call Prime Time he is square made and stout and a whopping 120 ratio for yearling weight. Does have a little white on his underline.



Lot 25



GRACE EXHIBITED THE GRAND CHAMPION BREEDING FEMALE AT THE COUNTY FAIR



Lot 27



Lot 28

29

LRS 2135M

BD: 2/16/24 • ASA#: 4359544 • Tattoo: 2135M
5/8 SM 3/8 AN • Homozygous Polled • Homozygous Black

TEHAMA PATRIARCH F028

sire: CCR ANTHEM 3355J

CCR MS 5161 COWBOY 8636F

HOOK'S EAGLE 6E

dam: LRS MS EAGLE 2135K

LRS MS FINALE 330A



Act. BW	76
BW Ratio	96
Adj WW	711
WW Ratio	107
Adj YW	1171
YW Ratio	98
WDA	3.10
ADG	2.93
Adj SC	38.1

Rank	CE	BW	WW	YW	ADG	MCE	Milk	STAY	DOC	CW	Marb	BF	REA	API	TI
EPDs	15.1	0.0	83.6	131.4	0.30	8.9	27.8	18.9	15.2	35.0	0.60	-0.005	0.97	160.7	91.8
25	50	25	25	30	20	20	10	20	45	20	90	10	15	15	

Our first CCR Anthem sired calf. Anthem and Bedrock are paternal brothers. Out of a first calf heifer he came in off the cow over 700 lbs. Time tested cow family with his granddam being sold when she was 11 years old.

31

LRS 279M

BD: 2/18/24 • ASA#: 4359380 • Tattoo: 279M
5/8 SM 3/8 AN • Homozygous Polled • Homozygous Black

TEHAMA PATRIARCH F028

sire: CCR BEDROCK 5171J

CCR MS 2073 COWBOY 5171C

LRS BADLANDS 401F

dam: LRS MS BADLANDS 279K

LRS MS INNOVATION 759E



Act. BW	82
BW Ratio	103
Adj WW	661
WW Ratio	100
Adj YW	1138
YW Ratio	95
WDA	2.96
ADG	3.03
Adj SC	36.3

Rank	CE	BW	WW	YW	ADG	MCE	Milk	STAY	DOC	CW	Marb	BF	REA	API	TI
EPDs	10.3	2.5	93.3	144.5	0.32	7.3	25.4	14.3	13.8	48.8	0.60	-0.026	0.92	144.3	93.6
80	90	10	10	20	45	40	55	35	15	20	70	15	35	15	

Out of a first calf heifer whose dam traces back to the old 3015A cow. Great growth predictions being in the top 10% for WW and YW as well as great carcass data as well.

32

LRS 989M

BD: 3/4/24 • ASA#: 4359523 • Tattoo: 989M
3/4 SM 1/4 AN • Homozygous Polled • Homozygous Black

GIBBS 7382E BROAD RANGE

sire: LRS RANGER 445K

LRS MS EAGLE 983G

BASIN RAINMAKER 4404

dam: LRS MS RAINMAKER 989G

LRS MS ELEVATE 6024D



Act. BW	82
BW Ratio	95
Adj WW	662
WW Ratio	104
Adj YW	1162
YW Ratio	99
WDA	3.27
ADG	3.16
Adj SC	38.6

Rank	CE	BW	WW	YW	ADG	MCE	Milk	STAY	DOC	CW	Marb	BF	REA	API	TI
EPDs	13.3	-0.8	83.2	123.0	0.25	8.6	27.0	18.5	16.5	33.4	0.52	-0.017	0.63	152.2	89.2
45	35	25	40	60	25	25	15	10	50	30	85	60	25	25	

I love his Rainmaker 4404 sired dam. The Rainmakers daughters we have just do a terrific job every year and I wish we would have more of them. His dam is ratioing 108 for WW and 107 for YW on her first four calves. Look at his genetic predictions for MCE, STAY, DOC, MILK and you can see why they are great females. Keep every daughter.

33

LRS 268M

BD: 2/25/24 • ASA#: 4359373 • Tattoo: 268M
1/2 SM 1/2 AN • Homozygous Polled • Homozygous Black

TEHAMA PATRIARCH F028

sire: CCR BEDROCK 5171J

CCR MS 2073 COWBOY 5171C

LRS TOPSHELF 902F

dam: LRS MS TOPSHELF 268K

LRS MS EFFECTIVE 612D



Act. BW	82
BW Ratio	103
Adj WW	689
WW Ratio	104
Adj YW	1157
YW Ratio	97
WDA	3.06
ADG	2.98
Adj SC	36.6

Rank	CE	BW	WW	YW	ADG	MCE	Milk	STAY	DOC	CW	Marb	BF	REA	API	TI
EPDs	12.4	-0.1	85.5	125.7	0.25	5.0	25.8	19.1	12.5	43.4	0.62	-0.028	0.67	157.4	92.0
55	50	20	35	60	80	35	10	50	25	20	70	55	15	15	

Bedrock out of another Top Shelf sired first calf heifer who is off to a great start. Just shy of 700 lbs at weaning and great stayability.

30

LRS 985M

BD: 3/7/24 • ASA#: 4359522 • Tattoo: 985M
1/2 SM 1/2 AN • Homozygous Polled • Heterozygous Black

CCR PAY DIRT 2340C

sire: CCR POUNDER 2045F

CCR MS 707 COWBOY 4123B

LRS ICONIC 303C

dam: LRS MS ICONIC 985G

LRS MS RANGE BOSS 662D



Act. BW	86
BW Ratio	100
Adj WW	636
WW Ratio	100
Adj YW	1246
YW Ratio	107
WDA	3.39
ADG	3.84
Adj SC	38.2

Rank	CE	BW	WW	YW	ADG	MCE	Milk	STAY	DOC	CW	Marb	BF	REA	API	TI
EPDs	11.4	2.5	97.4	157.0	0.37	5.5	23.7	14.4	14.3	48.7	0.43	-0.034	0.59	138.7	91.6
70	90	3	3	4	75	55	55	30	15	40	55	70	45	15	

Dam has had 2 other bull calves in previous sales who have gone to progressive breeders, we sure like the Pounder sired calves and especially the females. Really turning it on since he got on feed to ratio 107 at a year.

VOLUME DISCOUNTS

BUYER VOLUME DISCOUNTS

We will be offering discounts for volume bull buyers:
3 head - 3% | 4 head - 4% | 5 or more head 5%



LASSLE RANCH SIMMENTALS

LRS CBL 26M

34

BD: 3/18/24 • ASA#: 4426657 • Tattoo: 26M
1/2 SM 1/2 AN • Homozygous Polled • Homozygous Black

HOOK'S EAGLE 6E

sire: **LRS FALCON 442G**

LRS MS CLASS ACT 437B

MAR INNOVATION 251

dam: **CBL MS INNOVATION F388**

CBA QUEEN SHANNON 169



Act. BW	76
BW Ratio	94
Adj WW	651
WW Ratio	104
Adj YW	1172
YW Ratio	106
WDA	3.28
ADG	3.29
Adj SC	38.8

Rank	CE	BW	WW	YW	ADG	MCE	Milk	STAY	DOC	CW	Marb	BF	REA	API	TI
EPDs	13.1	-2.6	79.2	128.3	0.31	7.7	26.7	19.5	14.4	52.1	0.63	0.008	0.95	164.0	92.3
	45	15	40	30	25	40	30	10	25	10	15	95	15	10	15

104 off the cow, 106 at a year and he is just getting started. He too had a full brother a couple years ago that sold for \$11,000 into one of our best customers in North Dakota. Just give him a little more time to catch up from the summer, he will be just like his brother.

LRS 284M

35

BD: 2/19/24 • ASA#: 4359381 • Tattoo: 284M
3/4 SM 1/4 AN • Homozygous Polled • Homozygous Black

HOOK'S GALILEO 210G

sire: **HA COVENANT 30K**

HOOK'S CERES 11C

LRS TOPSHELF 902F

dam: **LRS MS TOPSHELF 284K**

LRS MS NEW RIVER 999G



Act. BW	88
BW Ratio	110
Adj WW	733
WW Ratio	111
Adj YW	1345
YW Ratio	112
WDA	3.46
ADG	3.88
Adj SC	36.8

Rank	CE	BW	WW	YW	ADG	MCE	Milk	STAY	DOC	CW	Marb	BF	REA	API	TI
EPDs	9.9	1.7	96.4	159.3	0.39	5.1	25.6	14.0	15.3	65.7	-0.042	0.83	152.4	98.9	
	85	80	3	2	2	80	40	60	20	2	15	45	25	20	4

Top shelf first calf heifer strikes again. 733 lbs off the cow and 1345 at yearling on this stout rascal.

LRS 9140M

37

BD: 3/4/24 • ASA#: 4359637 • Tattoo: 9140M
3/8 SM 5/8 AN • Homozygous Polled • Homozygous Black

WS PROCLAMATION E202

sire: **307 BACKROADS 736G**

PANNELL MISS 736

TRAXS PREMIUM D01

dam: **LRS MS PREMIUM 9140G**

LRS MS BISMARCK 164Y



Act. BW	84
BW Ratio	99
Adj WW	639
WW Ratio	ET
Adj YW	1149
YW Ratio	ET
WDA	3.19
ADG	3.21
Adj SC	33.6

Rank	CE	BW	WW	YW	ADG	MCE	Milk	STAY	DOC	CW	Marb	BF	REA	API	TI
EPDs	15.6	-0.6	75.9	109.7	0.21	10.5	26.1	13.7	9.5	21.6	0.55	0.020	-0.06	138.3	82.3
	20	40	50	70	85	10	35	65	85	85	25	99	99	45	45

Heifer bull. The only 3/8 SM we have in the sale this year and out of Harper's cow affectionately named Marshmellow. She has done a nice job in her young career ratioing 104 for WW. Excellent heifer bull candidate.

LRS 867M

38

BD: 3/13/24 • ASA#: 4359503 • Tattoo: 867M
3/4 SM 1/4 AN • Homozygous Polled • Homozygous Black

ASR AMERICAN PATRIOT F843

sire: **ASR AMERICAN PROUD H0301**

ASR LITTLE DESI D6273

CCR PAYDAY 0320C

dam: **LRS MS PAYDAY 867F**

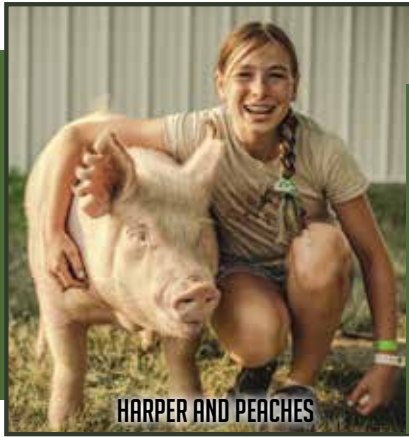
LRS MS TEN X 432B



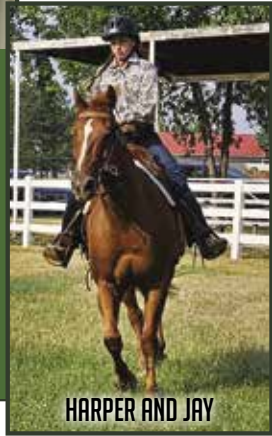
Act. BW	86
BW Ratio	100
Adj WW	664
WW Ratio	101
Adj YW	1196
YW Ratio	98
WDA	3.36
ADG	3.35
Adj SC	37.6

Rank	CE	BW	WW	YW	ADG	MCE	Milk	STAY	DOC	CW	Marb	BF	REA	API	TI
EPDs	10.4	0.3	87.1	132.1	0.28	5.8	22.5	16.9	16.9	41.0	0.46	-0.046	1.04	143.7	89.1
	80	55	15	25	40	70	65	30	10	30	35	45	10	35	25

Eye catching American Proud son who has crossed well with our cowherd the last few years. Dam breeds up early every year and is ratioing 103 at yearling on her cow card.



HARPER AND PEACHES



HARPER AND JAY



Lot 35

LRS 8040M

36

BD: 3/6/24 • ASA#: 4359603 • Tattoo: 8040M
5/8 SM 3/8 AN • Homozygous Polled • Homozygous Black

CCR PAY DIRT 2340C

sire: **CCR POUNDER 2045F**

CCR MS 707 COWBOY 4123B

LRS ICONIC 303C

dam: **LRS MS ICONIC 8040F**

LRS MS DUAL FOCUS 213Z



Act. BW	84
BW Ratio	98
Adj WW	586
WW Ratio	92
Adj YW	1247
YW Ratio	107
WDA	3.34
ADG	4.16
Adj SC	40.2

Rank	CE	BW	WW	YW	ADG	MCE	Milk	STAY	DOC	CW	Marb	BF	REA	API	TI
EPDs	16.5	-2.7	77.8	132.3	0.34	10.1	28.2	17.2	14.3	35.2	0.47	-0.016	0.61	156.0	88.8
	15	15	45	25	10	10	20	25	30	45	35	85	65	20	25

Heifer Bull. Been gaining like ghostbusters on test at over 4 lbs a day on this bull that will work on heifers or a group of young cows.



Lot 38

39

LRS 192M

BD: 3/23/24 • ASA#: 4359358 • Tattoo: 192M
3/4 SM 1/4 AN • Homozygous Polled • Homozygous Black

GIBBS 7382E BROAD RANGE

sire: **LRS RANGER 445K**

LRS MS EAGLE 983G

BASIN RAINMAKER 4404

dam: **LRS MS RAINMAKER 4404 192J**

LRS MS 3324-793E



Act. BW	86
BW Ratio	105
Adj WW	723
WW Ratio	109
Adj YW	1270
YW Ratio	111
WDA	3.51
ADG	3.46
Adj SC	38.1

Rank	CE	BW	WW	YW	ADG	MCE	Milk	STAY	DOC	CW	Marb	BF	REA	API	TI
EPDs	11.8	-1.3	80.4	131.2	0.32	7.3	28.0	22.4	13.1	34.4	0.36	-0.026	1.09	153.0	85.8
65	30	35	25	20	45	20	1	40	45	55	70	4	20	35	

Here is another Ranger out of a Rainmaker 4404 daughter just like lot 32. He ratioed 109 at weaning and 111 at a year. Excellent cross that worked extremely well.

41

LRS 981M

BD: 3/6/24 • ASA#: 4359520 • Tattoo: 981M
3/4 SM 1/4 AN • Homozygous Polled • Homozygous Black

ASR AMERICAN PROUD H0301

sire: **LRS DUTTON 611K**

LRS MS EAGLE 983G

LD CAPITALIST 316

dam: **LRS MS CAPITALIST 316 981G**

LRS MS ELEVATE 6026D



Act. BW	74
BW Ratio	86
Adj WW	637
WW Ratio	100
Adj YW	1137
YW Ratio	97
WDA	3.19
ADG	3.16
Adj SC	37.2

Rank	CE	BW	WW	YW	ADG	MCE	Milk	STAY	DOC	CW	Marb	BF	REA	API	TI
EPDs	14.7	-3.3	76.1	109.9	0.21	8.1	23.4	21.1	12.8	28.8	0.23	-0.013	0.71	144.9	80.5
30	10	50	65	85	30	55	3	45	65	75	85	45	35	55	

Dutton was our top seller in 2023 for \$30,000 to Select Sires, Trauernicht Simmentals in Nebraska and All Beef. We got just a little semen that spring and it resulted in just this one bull. If they are all like him I can't wait for more to arrive this spring. We did get a few heifers and sure do like the looks of them as well. Stout and square made with a big hip in him.

42

LRS 453M

BD: 3/5/24 • ASA#: 4359435 • Tattoo: 453M
3/4 SM 1/4 AN • Homozygous Polled • Homozygous Black

GIBBS 7382E BROAD RANGE

sire: **LRS RANGER 445K**

LRS MS EAGLE 983G

MCCONNELL ALTITUDE 3114

dam: **LRS MS ALTITUDE 066H**

LRS MS TOPGRADE 303A



Act. BW	82
BW Ratio	ET
Adj WW	596
WW Ratio	ET
Adj YW	1127
YW Ratio	ET
WDA	3.08
ADG	3.35
Adj SC	38.1

Rank	CE	BW	WW	YW	ADG	MCE	Milk	STAY	DOC	CW	Marb	BF	REA	API	TI
EPDs	16.7	-3.5	71.3	111.6	0.25	9.0	20.5	18.3	13.0	16.4	0.61	-0.012	0.62	163.2	88.0
15	10	70	65	60	20	80	15	45	95	20	85	65	10	25	

Heifer Bull. Check out this Heifer bull out of our 066H Donor who is from the same cow family of the lots 4-7 flush brothers. Both are daughters of the 303A cow who is the dam of Top Shelf and LRS Iconic as well.

43

LRS 886M

BD: 3/18/24 • ASA#: 4359506 • Tattoo: 886M
1/2 SM 1/2 AN • Homozygous Polled • Homozygous Black

CCR POUNDER 2045F

sire: **CCR PRIME TIME 6477H**

CCR MS 3370 BOLDR 6477D

MCCONNELL ALTITUDE 3114

dam: **LRS MS ALTITUDE 886F**

LRS MS ELEVATE 613D



Act. BW	82
BW Ratio	95
Adj WW	689
WW Ratio	97
Adj YW	1081
YW Ratio	98
WDA	3.17
ADG	2.47
Adj SC	34.8

Rank	CE	BW	WW	YW	ADG	MCE	Milk	STAY	DOC	CW	Marb	BF	REA	API	TI
EPDs	16.2	-2.0	69.8	115.1	0.28	7.7	28.6	14.0	16.7	17.1	0.70	0.004	0.15	155.5	87.8
15	20	75	55	40	40	20	60	10	95	10	95	99	20	30	

Heifer bull. Neat made Heifer bull whose dam has had 2 other bulls go through the sale ring.

40

LRS 964M

BD: 3/4/24 • ASA#: 4359518 • Tattoo: 964M
1/2 SM 1/2 AN • Homozygous Polled • Homozygous Black

TEHAMA TAHOE B767

sire: **LRS RARITY 983J**

LRS MS EAGLE 983G

LD CAPITALIST 316

dam: **LRS MS CAPITALIST 964G**

LRS MS TOPGRADE 3015A



Act. BW	96
BW Ratio	112
Adj WW	707
WW Ratio	112
Adj YW	1250
YW Ratio	107
WDA	3.50
ADG	3.42
Adj SC	36.6

Rank	CE	BW	WW	YW	ADG	MCE	Milk	STAY	DOC	CW	Marb	BF	REA	API	TI
EPDs	11.5	2.1	94.9	153.4	0.37	6.6	25.7	18.0	16.0	56.9	0.27	-0.038	0.94	138.1	87.5
65	85	4	4	4	55	35	20	15	5	70	55	15	45	30	

Dam traces back to the 3015A cow and she has had a great young career with her other bull calf going through the sale and a daughter retained in the bred Heifer group. Ratioed 112 at weaning and 107 at yearling. LRS Rarity was 983G's first calf that sold to Gibbs Farm in Alabama.



Lot 41



Lot 42



Lot 43

LASSLE RANCH SIMMENTALS

LRS 9115M

44

BD: 3/26/24 • ASA#: 4359605 • Tattoo: 9115M
3/4 SM 1/4 AN • Homozygous Polled • Homozygous Black

WS PROCLAMATION E202

sire: 307 BACKROADS 736G

PANNELL MISS 736

ELLIOTT A100

dam: LRS MS A100 9115G

LRS MS CLASS ACT 453B



Act. BW	82
BW Ratio	97
Adj WW	598
WW Ratio	94
Adj YW	1140
YW Ratio	97
WDA	3.17
ADG	3.42
Adj SC	35.8

Rank	CE	BW	WW	YW	ADG	MCE	Milk	STAY	DOC	CW	Marb	BF	REA	API	TI
EPDs	15.9	-1.9	63.0	88.6	0.16	8.9	21.9	21.1	4.2	11.6	0.31	-0.030	0.19	142.6	72.6
	20	20	90	95	99	20	70	3	99	99	60	70	99	35	80

Heifer bull. Granddam is a full sister to the 437B cow and his high stayability would agree being out of one of our top cow families. Backroads was a proclamation son we used for 4 years as a turn out bull who did a great job for us.

LRS CBL 29M

45

BD: 3/13/24 • ASA#: 4426660 • Tattoo: 29M
1/2 SM 1/2 AN • Polled • Homozygous Black

TEHAMA TAHOE B767

sire: LRS RARITY 983J

LRS MS EAGLE 983G

KS FARVE D73

dam: CBL MS FARVE H560

CBA MS ARSENAL E578



Act. BW	82
BW Ratio	104
Adj WW	642
WW Ratio	102
Adj YW	1023
YW Ratio	93
WDA	2.95
ADG	2.41
Adj SC	35.6

Rank	CE	BW	WW	YW	ADG	MCE	Milk	STAY	DOC	CW	Marb	BF	REA	API	TI
EPDs	14.8	-3.6	64.8	101.5	0.23	7.1	27.1	22.9	15.4	23.1	0.45	-0.002	0.68	158.5	80.5
	25	10	90	85	75	50	25	1	20	80	40	90	50	15	55

Heifer bull. Rarity sired heifer bull with top 1% stayability and top 15% API ranking.

LRS 2105M

46

BD: 3/14/24 • ASA#: 4359540 • Tattoo: 2105M
5/8 SM 3/8 AN • Homozygous Polled • Homozygous Black

TEHAMA PATRIARCH F028

sire: CCR ANTHEM 3355J

CCR MS 5161 COWBOY 8636F

LRS FIREBALL 3021H

dam: LRS MS BROADRANGE 2105K

LRS MS TOP TEN 609D

Act. BW	78
BW Ratio	99
Adj WW	702
WW Ratio	106
Adj YW	1247
YW Ratio	104
WDA	3.28
ADG	3.46
Adj SC	38.6

Rank	CE	BW	WW	YW	ADG	MCE	Milk	STAY	DOC	CW	Marb	BF	REA	API	TI
EPDs	14.2	-0.9	82.1	127.3	0.28	9.3	26.9	12.8	3.2	32.8	0.26	-0.009	0.64	128.6	82.6
	35	35	30	30	40	20	30	70	99	50	70	90	60	60	45

700 lb weaning weight and just shy of 1250 lbs at a year being out of a first calf heifer who certainly earned her keep.

LRS 247M

47

BD: 2/24/24 • ASA#: 4359369 • Tattoo: 247M
1/2 SM 1/2 AN • Homozygous Polled • Heterozygous Black

MILL BRAE IDENTIFIED 4031

sire: HF SAFE & SOUND 019

HF EMPRESS 804

LRS FALCON 442G

dam: LRS MS FALCON 247K

LRS MS CLASS ACT 407B



Act. BW	86
BW Ratio	108
Adj WW	632
WW Ratio	95
Adj YW	1303
YW Ratio	109
WDA	3.26
ADG	4.26
Adj SC	33.6

Rank	CE	BW	WW	YW	ADG	MCE	Milk	STAY	DOC	CW	Marb	BF	REA	API	TI
EPDs	16.3	0.5	87.2	152.0	0.40	10.1	25.0	18.7	10.4	63.5	0.48	-0.022	0.70	157.7	90.3
	15	60	15	4	2	10	45	15	75	2	35	70	50	15	20

Heterozygous Black. Check out this brute whose granddam 407B was a great cow. If you don't mind a redhead once in a while your gonna love this bull.



Lot 44



HARPER AND REX AT THE COUNTY FAIR



Lot 46



Lot 47

48

LRS 209M

BD: 2/24/24 • ASA#: 4359360 • Tattoo: 209M
1/2 SM 1/2 AN • Homozygous Polled • Homozygous Black

TEHAMA PATRIARCH F028

sire: **CCR ANTHEM 3355J**

CCR MS 5161 COWBOY 8636F

307 BACKROADS 736G

dam: **LRS MS BACKROADS 209K**

LRS MS RAINMAKER 079H



Act. BW	80
BW Ratio	101
Adj WW	696
WW Ratio	105
Adj YW	1207
YW Ratio	101
WDA	3.16
ADG	3.24
Adj SC	37.1

Rank	CE	BW	WW	YW	ADG	MCE	Milk	STAY	DOC	CW	Marb	BF	REA	API	TI
EPD's	14.9	-1.9	78.5	127.1	0.30	10.8	29.6	18.0	15.3	42.4	0.46	-0.008	0.68	152.3	87.3
Rank	25	20	40	30	30	10	15	20	20	25	35	90	50	25	30

Heifer Bull. Use him on your heifers for a couple years and then turn him out on the cows with his added growth figures for a multi purpose heifer bull.



Lot 48

49

LRS 275M

BD: 2/20/24 • ASA#: 4359378 • Tattoo: 275M
1/2 SM 1/2 AN • Homozygous Polled • Homozygous Black

MILL BRAE IDENTIFIED 4031

sire: **HF SAFE & SOUND 019**

HF EMPRESS 804

LRS FALCON 442G

dam: **LRS MS NALA 275K**

LRS MS GYPSY 883F



Act. BW	76
BW Ratio	96
Adj WW	659
WW Ratio	100
Adj YW	1262
YW Ratio	106
WDA	3.20
ADG	3.83
Adj SC	34.4

Rank	CE	BW	WW	YW	ADG	MCE	Milk	STAY	DOC	CW	Marb	BF	REA	API	TI
EPD's	16.0	0.6	99.3	171.3	0.45	9.2	26.2	13.4	12.4	77.2	0.40	-0.018	1.02	147.7	96.0
Rank	15	60	2	1	1	20	35	65	50	1	45	85	10	30	10

Safe and Sound sons are soggy made and maybe a touch more moderate framed but they put a lot of pounds across the scales because of the way they are built. We are just getting some daughters into production this spring and they have a good look to them.



Lot 49

50

LRS CBL 13M

BD: 3/7/24 • ASA#: 4426651 • Tattoo: 13M
1/2 SM 1/2 AN • Homozygous Polled • Homozygous Black

TEHAMA TAHOE B767

sire: **LRS RARITY 983J**

LRS MS EAGLE 983G

LRS TOP TEN 104A

dam: **CBL MS FULL TIME E357**

CBL IN DEW TIME Y121



Act. BW	80
BW Ratio	100
Adj WW	585
WW Ratio	93
Adj YW	1240
YW Ratio	112
WDA	3.27
ADG	4.12
Adj SC	36.7

Rank	CE	BW	WW	YW	ADG	MCE	Milk	STAY	DOC	CW	Marb	BF	REA	API	TI
EPD's	12.2	-0.3	90.6	154.0	0.40	5.1	19.0	13.3	15.4	60.0	0.23	-0.046	0.86	131.4	86.7
Rank	60	45	10	3	2	80	90	70	20	3	75	45	25	55	30

Gaining over 4 lbs a day and to ratio a whopping 112 for yearling weight combined with his ATM rating he will sire a set of cattle that will feed.

51

LRS 258M

BD: 2/4/24 • ASA#: 4359618 • Tattoo: 258M
5/8 SM 3/8 AN • Homozygous Polled • Homozygous Black

CCR ABILENE 6018C

sire: **CCR WACO 4142G**

CCR MS CATALYST 4142B

LRS TOPSHELF 902F

dam: **LRS MS QUEEN 258K**

LRS MS BAILEY 814F



Act. BW	72
BW Ratio	95
Adj WW	616
WW Ratio	-
Adj YW	1143
YW Ratio	-
WDA	2.88
ADG	3.35
Adj SC	34.0

Rank	CE	BW	WW	YW	ADG	MCE	Milk	STAY	DOC	CW	Marb	BF	REA	API	TI
EPD's	16.7	-0.4	76.4	114.8	0.24	10.3	21.9	11.1	15.7	49.5	0.54	-0.014	0.52	139.3	84.6
Rank	15	45	50	55	70	10	70	85	15	15	25	85	80	45	40

Dam is a Top shelf first calf heifer out of the 814F cow, who is the mother of the lot 16 bull. Great cow family Grace has here and possibly would work on a set of larger framed heifers.

52

LRS 855M

BD: 3/25/24 • ASA#: 4359502 • Tattoo: 855M
3/4 SM 1/4 AN • Homozygous Polled • Homozygous Black

LRS BADLANDS 401F

sire: **LRS FASTBALL 014J**

LRS MS CLASS ACT 437B

LRS TENX EXCELLANCE 352C

dam: **LRS MS EXCELLANCE 855F**

LRS MS FINAL ANSWER 904W



Act. BW	82
BW Ratio	95
Adj WW	658
WW Ratio	104
Adj YW	1193
YW Ratio	102
WDA	3.38
ADG	3.37
Adj SC	40.2

Rank	CE	BW	WW	YW	ADG	MCE	Milk	STAY	DOC	CW	Marb	BF	REA	API	TI
EPD's	11.5	-0.1	77.0	121.9	0.28	6.2	23.5	14.2	12.4	30.9	0.46	-0.049	0.72	136.9	83.8
Rank	65	50	45	40	40	65	55	60	50	60	35	45	45	45	40

Just an end of March baby who ratioed 104 at weaning and 102 at yearling and a big set of testicles for his age. From a productive cow who herself is ratioing 103 for WW and YW on her report card.



GRACE IS A SENIOR THIS YEAR

LASSLE RANCH SIMMENTALS

LRS 1175M

53

BD: 3/15/24 • ASA#: 4359534 • Tattoo: 1175M

3/4 SM 1/4 AN • Homozygous Polled • Homozygous Black

CCR PAY DIRT 2340C

sire: CCR POUNDER 2045F

CCR MS 707 COWBOY 4123B

LRS BADLANDS 401F

dam: LRS MS BADLANDS 1175J

LRS MS ELEVATE 6018D



Act. BW	84
BW Ratio	103
Adj WW	670
WW Ratio	101
Adj YW	1132
YW Ratio	99
WDA	3.12
ADG	2.93
Adj SC	39.7

Rank	CE	BW	WW	YW	ADG	MCE	Milk	STAY	DOC	CW	Marb	BF	REA	API	TI
50	12.8	-1.8	80.6	125.1	0.28	8.2	29.5	16.5	16.7	39.0	0.47	-0.020	0.78	147.3	88.4

Good looking Pounder son who brings a lot of balance to the table phenotypically. Stems from a great cow family who has stood the test of time.

LRS 1116M

54

BD: 3/18/24 • ASA#: 4359528 • Tattoo: 1116M

5/8 SM 3/8 AN • Homozygous Polled • Homozygous Black

GIBBS 7382E BROAD RANGE

sire: LRS 030K

LRS MS FRANCHISE 030H

HOOK'S EAGLE 6E

dam: LRS MS EAGLE 1116J

LRS MS ICONIC 764E



Act. BW	70
BW Ratio	86
Adj WW	701
WW Ratio	106
Adj YW	1146
YW Ratio	100
WDA	3.19
ADG	2.82
Adj SC	35.3

Rank	CE	BW	WW	YW	ADG	MCE	Milk	STAY	DOC	CW	Marb	BF	REA	API	TI
2	20.1	-2.6	77.6	123.1	0.28	11.1	22.4	14.8	12.7	30.3	0.44	-0.048	0.72	153.0	87.6
15	15	45	40	40	4	65	50	45	60	40	45	45	20	30	

Heifer bull. 030K, his sire, was a bull we turned out a couple years ago here on the ranch that had excellent libido. Came in off the cow ratioing 106. Slowed down a little while on feed, but perhaps not surprising with the calving ease genetics. His young dam is off to a great start ratioing 107 on her first two calves off grass.

LRS CBL 27M

56

BD: 3/16/24 • ASA#: 4426658 • Tattoo: 27M

1/2 SM 1/2 AN • Homozygous Polled • Homozygous Black

CCR PAY DIRT 2340C

sire: CCR POUNDER 2045F

CCR MS 707 COWBOY 4123B

WS LIGHT SPEED E230

dam: CBL MS LIGHT SPEED H130

CBL MS ICONIC E127



Act. BW	80
BW Ratio	101
Adj WW	654
WW Ratio	104
Adj YW	1101
YW Ratio	100
WDA	3.10
ADG	2.82
Adj SC	37.7

Rank	CE	BW	WW	YW	ADG	MCE	Milk	STAY	DOC	CW	Marb	BF	REA	API	TI
13.1	0.0	84.6	132.6	0.30	7.1	29.2	18.8	17.6	41.0	0.69	0.001	0.69	162.7	93.9	
45	50	20	25	30	50	15	10	10	30	15	95	50	10	10	

The Pounder cattle do lots of things right and just keep you out of the ditch. Really balanced genetics that are good footed and sound made when you study them but also have a nice EPD profile.

LRS 191M

57

BD: 4/16/24 • ASA#: 4359357 • Tattoo: 191M

5/8 SM 3/8 AN • Homozygous Polled • Homozygous Black

TEHAMA PATRIARCH F028

sire: CCR ANTHEM 3355J

CCR MS 5161 COWBOY 8636F

TJ FLAT IRON 259G

dam: LRS MS FLAT IRON 191J

LRS MS ROBUST 423B



Act. BW	84
BW Ratio	103
Adj WW	699
WW Ratio	106
Adj YW	1142
YW Ratio	100
WDA	3.22
ADG	2.77
Adj SC	35.9

Rank	CE	BW	WW	YW	ADG	MCE	Milk	STAY	DOC	CW	Marb	BF	REA	API	TI
14.9	-0.9	81.5	116.4	0.22	9.2	27.8	17.6	6.2	19.8	0.69	-0.015	0.77	161.1	93.0	
25	35	30	55	80	20	20	20	99	90	15	85	35	15	15	

Right at 700 lbs when we rounded him up this fall. Dam's first bull made the sale last year. Check out his birth date, he is still wet behind the ears.



Lot 53



Lot 54

LRS 233M

55

BD: 2/21/24 • ASA#: 4359365 • Tattoo: 233M

5/8 SM 3/8 AN • Homozygous Polled • Homozygous Black

TEHAMA PATRIARCH F028

sire: CCR BEDROCK 5171J

CCR MS 2073 COWBOY 5171C

LRS BADLANDS 401F

dam: LRS MS BADLANDS 233K

LRS MS ICONIC 965G



Act. BW	74
BW Ratio	94
Adj WW	637
WW Ratio	96
Adj YW	1199
YW Ratio	100
WDA	3.05
ADG	3.56
Adj SC	37.9

Rank	CE	BW	WW	YW	ADG	MCE	Milk	STAY	DOC	CW	Marb	BF	REA	API	TI
14.9	-2.4	85.7	137.2	0.32	9.4	24.0	15.5	16.1	48.5	0.81	-0.017	0.65	170.1	100.3	
25	15	20	15	20	15	50	45	15	15	5	85	60	10	3	

Heifer Bull. Look at his Genetic predictions from CE to API. Another first calf heifer really getting it done and she traces back to the dam of LRS Elevate.



Lot 57

58

LRS 257M

BD: 2/27/24 • ASA#: 4359370 • Tattoo: 257M
1/2 SM 1/2 AN • Homozygous Polled • Homozygous Black

TEHAMA PATRIARCH F028

sire: CCR ANTHEM 3355J

CCR MS 5161 COWBOY 8636F

LRS TOPSHELF 902F

dam: LRS MS TOPSHELF 257K

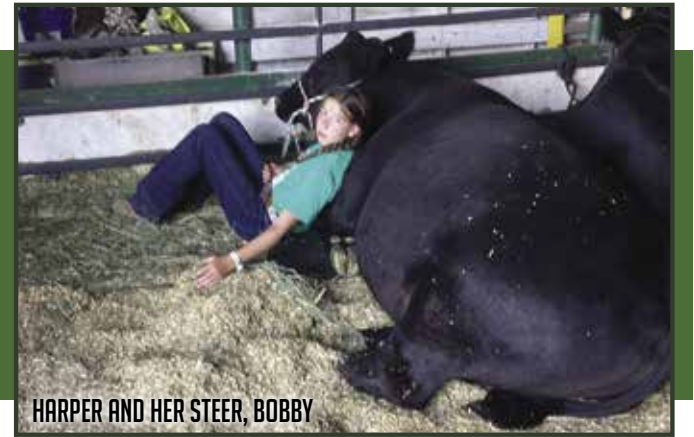
LRS MS EFFECTIVE 806F



Act. BW	78
BW Ratio	99
Adj WW	646
WW Ratio	98
Adj YW	1148
YW Ratio	96
WDA	2.98
ADG	3.19
Adj SC	36.7

Rank	CE	BW	WW	YW	ADG	MCE	Milk	STAY	DOC	CW	Marb	BF	REA	API	TI
EPDs	15.2	-2.8	70.9	105.4	0.22	10.3	25.7	19.3	15.0	24.8	0.45	0.000	0.80	152.2	83.0
25	15	70	75	80	10	35	10	20	80	40	95	30	25	45	

Heifer Bull. Top Shelf 2 year old strikes again with this Anthem sired heifer bull



HARPER AND HER STEER, BOBBY

59

LRS 175M

BD: 4/2/24 • ASA#: 4359352 • Tattoo: 175M
5/8 SM 3/8 AN • Homozygous Polled • Homozygous Black

CCR POUNDER 2045F

sire: CCR PRIME TIME 6477H

CCR MS 3370 BOLDR 6477D

LRS BADLANDS 401F

dam: LRS MS BADLANDS 175J

LRS MS NIGHTRIDE 511C



Act. BW	86
BW Ratio	105
Adj WW	627
WW Ratio	95
Adj YW	1106
YW Ratio	96
WDA	3.05
ADG	3.03
Adj SC	40.1

Rank	CE	BW	WW	YW	ADG	MCE	Milk	STAY	DOC	CW	Marb	BF	REA	API	TI
EPDs	12.8	-1.6	71.3	116.8	0.28	7.2	24.8	17.9	16.3	33.7	0.68	0.002	0.31	157.4	86.7
50	25	70	55	40	45	45	20	15	50	15	95	99	15	30	

Just an April 2nd calf with excellent stayability and Docility. We don't chase epd's but really watch Stayability. Longevity is one of the most important cowboy traits to profitability.



Lot 59

60

LRS 112M

BD: 3/16/24 • ASA#: 4359340 • Tattoo: 112M
5/8 SM 3/8 AN • Homozygous Polled • Homozygous Black

CCR PAY DIRT 2340C

sire: CCR POUNDER 2045F

CCR MS 707 COWBOY 4123B

307 BACKROADS 736G

dam: LRS MS BACKROADS 112J

LRS MS CRAFTSMAN 954G



Act. BW	78
BW Ratio	96
Adj WW	689
WW Ratio	104
Adj YW	1049
YW Ratio	91
WDA	2.98
ADG	2.29
Adj SC	35.7

Rank	CE	BW	WW	YW	ADG	MCE	Milk	STAY	DOC	CW	Marb	BF	REA	API	TI
EPDs	13.8	0.9	82.1	128.7	0.29	7.5	30.9	15.2	15.7	43.7	0.39	-0.034	0.72	137.3	84.3
35	70	30	30	35	40	10	45	15	20	50	55	45	45	40	

Weaned off just shy of 700 lbs to ratio 104 from a solid line of cows.

61

LRS 009M

BD: 3/22/24 • ASA#: 4359323 • Tattoo: 009M
5/8 SM 3/8 AN • Homozygous Polled • Homozygous Black

S POWERPOINT 843

sire: KS POINT TAKEN H579

KS FANNIE F74

HOOK'S EAGLE 6E

dam: LRS MS EAGLE 009H

LRS MS TOP TEN 803F



Act. BW	82
BW Ratio	97
Adj WW	678
WW Ratio	107
Adj YW	1178
YW Ratio	101
WDA	3.30
ADG	3.16
Adj SC	38.5

Rank	CE	BW	WW	YW	ADG	MCE	Milk	STAY	DOC	CW	Marb	BF	REA	API	TI
EPDs	13.1	1.1	92.8	141.4	0.30	6.4	25.9	14.0	15.9	29.5	0.55	-0.023	0.67	146.4	93.8
45	70	10	15	30	60	35	60	15	65	25	70	55	30	10	

Ratioed 107 off the cow for this G+, ATM rated bull whose dam is running a 107 Ratio at weaning on her progeny.



Lot 62

62

LRS 2110M

BD: 2/23/24 • ASA#: 4359541 • Tattoo: 2110M
3/4 SM 1/4 AN • Homozygous Polled • Homozygous Black

TEHAMA PATRIARCH F028

sire: CCR ANTHEM 3355J

CCR MS 5161 COWBOY 8636F

HOOK'S EAGLE 6E

dam: LRS MS EAGLE 2110K

LRS MS GRAVITY 745E



Act. BW	70
BW Ratio	89
Adj WW	631
WW Ratio	95
Adj YW	1151
YW Ratio	96
WDA	2.94
ADG	3.30
Adj SC	37.0

Rank	CE	BW	WW	YW	ADG	MCE	Milk	STAY	DOC	CW	Marb	BF	REA	API	TI
EPDs	16.7	-1.7	79.2	127.2	0.30	10.6	23.0	16.8	18.7	34.1	0.47	-0.033	0.84	153.6	88.1
15	25	40	30	30	10	60	30	3	50	35	55	25	20	25	

Started off into this world at only 70lbs. Out of a daughter who is part of the 303A cow line known for their maternal attributes.

LASSLE RANCH SIMMENTALS

LRS 836M

63

BD: 3/12/24 • ASA#: 4359500 • Tattoo: 836M
1/2 SM 1/2 AN • Homozygous Polled • Homozygous Black

TEHAMA TAHOE B767

sire: LRS RARITY 983J

LRS MS EAGLE 983G

CONNELLY CAPITALIST 028

dam: LRS MS CAPITALIST 836F

LRS MS CLASS ACT 453B



Act. BW	104
BW Ratio	121
Adj WW	745
WW Ratio	118
Adj YW	1415
YW Ratio	121
WDA	3.92
ADG	4.21
Adj SC	37.5

Rank EPDs	CE	BW	WW	YW	ADG	MCE	Milk	STAY	DOC	CW	Marb	BF	REA	API	TI
	8.0	6.2	114.9	185.6	0.44	2.6	24.0	18.8	15.7	79.4	0.26	-0.049	1.27	135.5	93.9
	95	99	1	1	1	99	50	10	15	1	70	45	1	50	10

Put him on a set of mature cows and add pay weight to your calf crop. Big, Strong bull with over a 1400 lb yearling weight.



LRS 766M

64

BD: 3/4/24 • ASA#: 4359491 • Tattoo: 766M
1/2 SM 1/2 AN • Polled Scurred • Homozygous Black

TEHAMA TAHOE B767

sire: LRS RARITY 983J

LRS MS EAGLE 983G

S A V RESOURCE 1441

dam: LRS MS RESOURCE 766E

LRS MS TOPGRADE 3019A



Act. BW	90
BW Ratio	105
Adj WW	691
WW Ratio	109
Adj YW	1218
YW Ratio	104
WDA	3.44
ADG	3.32
Adj SC	41.1

Rank EPDs	CE	BW	WW	YW	ADG	MCE	Milk	STAY	DOC	CW	Marb	BF	REA	API	TI
	10.7	1.2	85.1	144.0	0.37	4.4	28.6	15.1	11.6	62.2	0.24	-0.030	1.15	128.4	82.5
	75	75	20	10	4	90	20	50	65	2	75	70	3	60	45

Scurred and Heterozygous polled, but again if you are looking to add some weight when you cross the scales, he is a great option. Easy to see why his sire Rarity is one of the top growth bulls in the breed.

LRS 074M

65

BD: 3/8/24 • ASA#: 4359336 • Tattoo: 074M
1/2 SM 1/2 AN • Homozygous Polled • Homozygous Black

G A R BIG STEP K715

sire: EZAR STEP UP 9178

BASIN LUCY 4261

NLC GEN TEN 82E

dam: LRS MS GEN TEN 074H

LRS MS CLASS ACT 445B



Act. BW	90
BW Ratio	106
Adj WW	825
WW Ratio	116
Adj YW	1178
YW Ratio	107
WDA	3.48
ADG	2.26
Adj SC	41.3

Rank EPDs	CE	BW	WW	YW	ADG	MCE	Milk	STAY	DOC	CW	Marb	BF	REA	API	TI
	9.6	1.6	95.2	156.0	0.38	8.3	28.1	16.7	15.2	55.0	0.80	-0.019	0.90	162.8	101.1
	85	80	4	3	3	30	20	30	20	10	10	85	20	10	2

Top growth and top API, because he combines that growth with stayability and marbling. Granddam is a full sister to the 437B cow.

LRS 940M

66

BD: 2/28/24 • ASA#: 4359512 • Tattoo: 940M
1/2 SM 1/2 AN • Homozygous Polled • Homozygous Black

G A R BIG STEP K715

sire: EZAR STEP UP 9178

BASIN LUCY 4261

HOOK'S EAGLE 6E

dam: LRS MS EAGLE 940G

LRS MS TIMTRAVELER 328A



Act. BW	88
BW Ratio	102
Adj WW	713
WW Ratio	108
Adj YW	1216
YW Ratio	100
WDA	3.43
ADG	3.19
Adj SC	37.8

Rank EPDs	CE	BW	WW	YW	ADG	MCE	Milk	STAY	DOC	CW	Marb	BF	REA	API	TI
	12.4	-0.3	88.6	143.4	0.34	10.5	25.2	16.7	14.9	53.3	0.74	0.002	0.77	162.9	97.5
	55	45	15	10	10	10	40	30	20	10	10	95	35	10	5

Check out his weaning weight. Dam is a daughter of the 328A cow who has the lot 134 bred heifer and is also the dam of the lot 18 bull.

LRS 962M

67

BD: 3/6/24 • ASA#: 4359517 • Tattoo: 962M
3/4 SM 1/4 AN • Homozygous Polled • Homozygous Black

GIBBS 7382E BROAD RANGE

sire: LRS RANGER 445K

LRS MS EAGLE 983G

LRS ICONIC 303C

dam: LRS MS ICONIC 962G

LRS MS ADJUST 357A



Act. BW	90
BW Ratio	105
Adj WW	743
WW Ratio	117
Adj YW	1286
YW Ratio	110
WDA	3.61
ADG	3.42
Adj SC	38.2

Rank EPDs	CE	BW	WW	YW	ADG	MCE	Milk	STAY	DOC	CW	Marb	BF	REA	API	TI
	10.7	0.4	99.7	157.7	0.36	6.0	23.6	17.2	16.5	56.9	0.43	-0.044	0.84	148.1	95.7
	75	60	2	2	10	65	55	25	10	5	40	45	25	30	10

Larger framed bull with lots of extension from a cow that consistently weans big calves, including him at almost 750 lbs.

LRS 0143M

68

BD: 3/9/24 • ASA#: 4359347 • Tattoo: 0143M
PB SM • Homozygous Polled • Homozygous Black

ASR AMERICAN PATRIOT F843

sire: ASR AMERICAN PROUD H0301

ASR LITTLE DESI D6273

NLC GEN TEN 82E

dam: LRS MS GEN TEN 0143H

LRS MS TOPGRADE 303A



Act. BW	86
BW Ratio	102
Adj WW	738
WW Ratio	112
Adj YW	1313
YW Ratio	108
WDA	3.60
ADG	3.62
Adj SC	39.3

Rank EPDs	CE	BW	WW	YW	ADG	MCE	Milk	STAY	DOC	CW	Marb	BF	REA	API	TI
	10.7	1.2	92.2	141.9	0.31	5.3	23.5	15.8	16.3	31.4	0.37	-0.065	0.91	149.7	93.6
	65	50	10	10	15	65	50	50	10	40	20	70	45	25	15

Check out the ratios on this American Proud son and it runs in the genes as his dam is running ration of 107 for weaning and 108 for yearling weight. Her first two daughters are both part of the herd.

LRS 2102M

69

BD: 3/3/24 • ASA#: 4359539 • Tattoo: 2102M
3/4 SM 1/4 AN • Homozygous Polled • Homozygous Black

TEHAMA PATRIARCH F028

sire: CCR ANTHEM 3355J

CCR MS 5161 COWBOY 8636F

LRS FALCON 442G

dam: LRS MS FALCON 2102K

LRS MS ELEVATE 744E



Act. BW	86
BW Ratio	108
Adj WW	719
WW Ratio	109
Adj YW	1137
YW Ratio	95
WDA	3.06
ADG	2.66
Adj SC	34.0

Rank EPDs	CE	BW	WW	YW	ADG	MCE	Milk	STAY	DOC	CW	Marb	BF	REA	API	TI
	12.9	0.4	73.6	110.2	0.23	9.1	28.6	20.9	14.9	38.9	0.29	-0.030	1.04	138.9	77.1
	50	60	60	65	75	20	20	3	20	35	65	70	10	45	65

First calf heifer rang the bell with him at over 700 lbs when we weaned this fall. Check out the convenience traits: MCE, STAY and DOC.

70

LRS 661M

BD: 3/3/24 • ASA#: 4359636 • Tattoo: 661M
5/8 SM 3/8 AN • Homozygous Polled • Heterozygous Black

TEHAMA TAHOE B767

sire: **LRS RARITY 983J**

LRS MS EAGLE 983G

CCR GRAVITY 9064A

dam: **LRS MS JOY 661D**

LRS MS PLATINUM 415B



Act. BW	86
BW Ratio	101
Adj WW	750
WW Ratio	-
Adj YW	1175
YW Ratio	-
WDA	3.41
ADG	2.68
Adj SC	37.0

Rank	CE	BW	WW	YW	ADG	MCE	Milk	STAY	DOC	CW	Marb	BF	REA	API	TI
EPDs	11.4	-0.1	81.4	127.6	0.29	6.2	25.4	17.7	17.2	45.1	0.32	-0.062	0.89	138.0	83.2
70	50	30	30	35	65	40	20	10	20	60	20	20	45	45	

Heterozygous Black. Harper's last bull from her first cow "Joy." Tears were shed when we had to let her go this past fall, but she brings another good one to offering who weaned off at 750 lbs.



71

LRS 9164M

BD: 3/8/24 • ASA#: 4359612 • Tattoo: 9164M
1/2 SM 1/2 AN • Homozygous Polled • Homozygous Black

TEHAMA PATRIARCH F028

sire: **CCR ANTHEM 3355J**

CCR MS 5161 COWBOY 8636F

S A V RAINDANCE 6848

dam: **LRS MS RAINDANCE 9164G**

LRS MS OLIE 078X



Act. BW	90
BW Ratio	105
Adj WW	701
WW Ratio	111
Adj YW	1236
YW Ratio	106
WDA	3.48
ADG	3.37
Adj SC	34.8

Rank	CE	BW	WW	YW	ADG	MCE	Milk	STAY	DOC	CW	Marb	BF	REA	API	TI
EPDs	13.6	-0.6	81.1	132.4	0.32	7.6	27.9	15.3	8.1	51.0	0.35	-0.035	1.18	139.5	85.4
40	40	30	25	20	40	20	45	95	10	55	55	2	40	35	

Just over 700 lbs off the cow and kept it up to ratio 106 at a year. This bull has shown to be a little bit nervous as we have worked them this fall and winter. He has not given us any problems, but is definitely more nervous.



72

LRS 8030M

BD: 3/28/24 • ASA#: 4359602 • Tattoo: 8030M
3/4 SM 1/4 AN • Homozygous Polled • Homozygous Black

LRS BADLANDS 401F

sire: **LRS FASTBALL 014J**

LRS MS CLASS ACT 437B

TRAXS PREMIUM D01

dam: **LRS MS PREMIUM 8030F**

LRS MS ROBUST 423B



Act. BW	92
BW Ratio	107
Adj WW	657
WW Ratio	104
Adj YW	1335
YW Ratio	114
WDA	3.68
ADG	4.26
Adj SC	37.4

Rank	CE	BW	WW	YW	ADG	MCE	Milk	STAY	DOC	CW	Marb	BF	REA	API	TI
EPDs	10.2	2.6	93.2	138.0	0.28	5.2	25.3	15.8	10.8	50.5	0.40	-0.059	1.15	135.4	88.5
80	90	10	15	40	80	40	40	75	10	45	30	3	50	25	

End of march born calf who has been gaining over 4 lbs a day reflected in his over 1300 lbs yearling weight.



73

LRS 620M

BD: 3/18/24 • ASA#: 4359483 • Tattoo: 620M
1/2 SM 1/2 AN • Homozygous Polled • Homozygous Black

BASIN RAINMAKER 4404

sire: **LRS THEO 991J**

LRS MS HERSHEY 991G

S A V RESOURCE 1441

dam: **LRS MS RESOURCE 620D**

LRS MS SUREBET 104Y



Act. BW	90
BW Ratio	105
Adj WW	679
WW Ratio	103
Adj YW	1263
YW Ratio	104
WDA	3.54
ADG	3.67
Adj SC	38.3

Rank	CE	BW	WW	YW	ADG	MCE	Milk	STAY	DOC	CW	Marb	BF	REA	API	TI
EPDs	11.2	4.0	92.7	147.3	0.34	4.6	24.0	10.6	13.8	51.2	0.32	-0.065	0.75	120.6	84.7
70	99	10	10	10	85	50	90	35	10	60	20	40	75	40	

ATM Logo for this bull who will catch your eye in the pens. Granddam is the dam of LRS TopTen for you history buffs.



LASSLE RANCH SIMMENTALS

LRS CBL 19M

74

BD: 3/14/24 • ASA#: 4426656 • Tattoo: 19M

3/4 SM 1/4 AN • Homozygous Polled • Homozygous Black

HOOK'S EAGLE 6E

sire: LRS FALCON 442G

LRS MS CLASS ACT 437B

WS PROCLAMATION E202

dam: CBL MS J271

CLASSIC LADY 597



Act. BW	74
BW Ratio	96
Adj WW	643
WW Ratio	103
Adj YW	1211
YW Ratio	110
WDA	3.23
ADG	3.59
Adj SC	37.6

Rank	CE	BW	WW	YW	ADG	MCE	Milk	STAY	DOC	CW	Marb	BF	REA	API	TI
	13.9	-0.2	91.6	152.2	0.38	6.9	24.5	17.5	16.7	58.1	0.47	-0.009	0.97	154.2	93.4
	35	45	10	4	3	50	45	20	10	4	35	90	10	20	15

Big scrotated Falcon bull who is gaining over 3.5 lbs a day who ranks high for REA as well.

LRS CBL 44M

76

BD: 3/23/24 • ASA#: 4426665 • Tattoo: 44M

5/8 SM 3/8 AN • Homozygous Polled • Homozygous Black

LRS BADLANDS 401F

sire: LRS 739K

LRS MS ICONIC 739E

WS LIGHT SPEED E230

dam: CBL MS LIGHT SPEED G719

CBL MS IN SURE 22B D426



Act. BW	76
BW Ratio	95
Adj WW	667
WW Ratio	106
Adj YW	1039
YW Ratio	94
WDA	3.05
ADG	2.35
Adj SC	36.1

Rank	CE	BW	WW	YW	ADG	MCE	Milk	STAY	DOC	CW	Marb	BF	REA	API	TI
	10.6	-1.8	79.2	105.2	0.16	5.4	21.7	18.5	15.1	31.5	0.34	-0.054	0.88	149.7	87.0
	65	10	45	75	99	60	65	20	15	35	25	85	50	25	30

Carcass improver, check out his marbling and REA. Came in off the cow over 660 lbs to ratio 106.

LRS CBL 17M

78

BD: 3/11/24 • ASA#: 4426654 • Tattoo: 17M

1/2 SM 1/2 AN • Homozygous Polled • Homozygous Black

HOOK'S EAGLE 6E

sire: LRS FALCON 442G

LRS MS CLASS ACT 437B

HAF BOMBER 9208

dam: OPP BESSIE ELIMINATOR J97

OPP BESSIE ELIMINATOR G79



Act. BW	80
BW Ratio	103
Adj WW	641
WW Ratio	102
Adj YW	1197
YW Ratio	108
WDA	3.16
ADG	3.53
Adj SC	37.5

Rank	CE	BW	WW	YW	ADG	MCE	Milk	STAY	DOC	CW	Marb	BF	REA	API	TI
	12.1	-2.8	91.5	158.6	0.42	6.0	25.3	19.0	13.5	58.9	0.52	-0.005	1.01	163.4	97.9
	60	15	10	2	1	65	40	10	35	4	30	90	10	10	5

True F1 1/2 blood being a Falcon out of a purebred angus cow who would be a complete outcross to any of the angus bulls we have used over the years. Ratioed over 100 for both WW and YW and also has excellent growth predictions in his EPD profile.

LRS 918M

79

BD: 2/26/24 • ASA#: 4359508 • Tattoo: 918M

5/8 SM 3/8 AN • Homozygous Polled • Homozygous Black

CCR ABILENE 6018C

sire: CCR WACO 4142G

CCR MS CATALYST 4142B

HOOK'S EAGLE 6E

dam: LRS MS EAGLE 918G

LRS MS IRON MAN 791E



Act. BW	82
BW Ratio	95
Adj WW	630
WW Ratio	99
Adj YW	1156
YW Ratio	99
WDA	3.18
ADG	3.32
Adj SC	35.2

Rank	CE	BW	WW	YW	ADG	MCE	Milk	STAY	DOC	CW	Marb	BF	REA	API	TI
	16.0	-3.5	71.9	113.8	0.26	6.2	20.9	15.7	13.4	38.9	0.79	-0.035	0.79	167.6	93.0
	15	10	65	60	55	65	75	40	40	35	10	55	35	10	15

Heifer bull. His sire Waco we have used on some heifers the last few years with great results. Excellent calving ease and the calves have lots of get up and go. His dam has had two other bull calves, and both have made the sale.



Lot 74

LRS 634M

75

BD: 3/17/24 • ASA#: 4359484 • Tattoo: 634M

1/2 SM 1/2 AN • Homozygous Polled • Homozygous Black

CCR POUNDER 2045F

sire: CCR NATIONWIDE 4503J

CCR MS NATIONAL 4503B

LRS ELEVATE 213B

dam: LRS MS ELEVATE 634D

LRS MS BISMARCK 106Y



Act. BW	92
BW Ratio	107
Adj WW	633
WW Ratio	100
Adj YW	1186
YW Ratio	101
WDA	3.32
ADG	3.47
Adj SC	38.3

Rank	CE	BW	WW	YW	ADG	MCE	Milk	STAY	DOC	CW	Marb	BF	REA	API	TI
	11.0	1.6	78.4	129.3	0.32	7.0	27.8	17.1	8.7	32.7	0.59	0.001	0.56	146.7	85.6
	75	80	40	30	20	50	20	25	90	50	20	95	75	30	35

We used Nationwide, this bulls sire, as another option to infuse the influence of Pounder. We really liked that he was out of a National bred cow as they make great females. This is his dam's 5th bull calf and they have all made the sale.

LRS 081M

77

BD: 3/6/24 • ASA#: 4359337 • Tattoo: 081M

1/2 SM 1/2 AN • Homozygous Polled • Homozygous Black

TEHAMA PATRIARCH F028

sire: CCR BEDROCK 5171J

CCR MS 2073 COWBOY 5171C

LRS FAKE NEWS 437E

dam: LRS MS FAKE NEWS 081H

LRS MS TOP TEN 640D



Act. BW	88
BW Ratio	104
Adj WW	710
WW Ratio	112
Adj YW	1278
YW Ratio	109
WDA	3.51
ADG	3.58
Adj SC	41.2

Rank	CE	BW	WW	YW	ADG	MCE	Milk	STAY	DOC	CW	Marb	BF	REA	API	TI
	10.0	2.2	100.7	171.2	0.44	4.6	22.1	14.5	13.7	60.7	0.42	-0.024	0.49	140.0	93.6
	85	90	2	1	1	85	70	55	35	3	45	70	85	40	15

Over 700 lbs off the cow and almost 1300 lbs at a year. Big set of nuts under him and gaining over 3.5 lbs a day.



Lot 79

80

LRS 9156M

BD: 3/29/24 • ASA#: 4359609 • Tattoo: 9156M
5/8 SM 3/8 AN • Homozygous Polled • Homozygous Black

WS PROCLAMATION E202

sire: 307 BACKROADS 736G

PANNELL MISS 736

HOOK'S EAGLE 6E

dam: LRS MS EAGLE 9156G

LRS MS DUAL FOCUS 213Z

Act. BW	86
BW Ratio	100
Adj WW	756
WW Ratio	119
Adj YW	1290
YW Ratio	110
WDA	3.68
ADG	3.37
Adj SC	36.4

Rank	CE	BW	WW	YW	ADG	MCE	Milk	STAY	DOC	CW	Marb	BF	REA	API	TI
	14.3	0.4	84.0	125.8	0.26	8.0	28.9	11.8	13.8	41.0	0.38	-0.036	1.11	132.2	86.1
30	60	25	35	55	35	15	80	35	30	50	55	4	55	35	

Just an end of March bull with a weaning weight of 756 lbs to ratio 119 and almost 1300 lbs for YW to ratio 110.

82

LRS CBL 18M

BD: 3/15/24 • ASA#: 4426655 • Tattoo: 18M
1/2 SM 1/2 AN • Homozygous Polled • Homozygous Black

CCR PAY DIRT 2340C

sire: CCR POUNDER 2045F

CCR MS 707 COWBOY 4123B

MCDF NEW RIVER 499B

dam: CBL MS NEW RIVER G99

CBL MS ELEVATE E427



Act. BW	82
BW Ratio	103
Adj WW	641
WW Ratio	102
Adj YW	1126
YW Ratio	102
WDA	3.16
ADG	3.06
Adj SC	35.7

Rank	CE	BW	WW	YW	ADG	MCE	Milk	STAY	DOC	CW	Marb	BF	REA	API	TI
	10.8	1.9	99.1	160.1	0.38	6.5	28.3	13.6	17.3	68.1	0.53	-0.037	0.64	143.7	96.1
75	85	2	2	3	60	20	65	10	1	25	55	60	35	10	

Top 2% for weaning and yearling weight EPD and he himself ratioed 102 for both those traits as well. Gets both the G+ and ATM stamps as well for a well balanced genetic package.

84

LRS 206M

BD: 2/21/24 • ASA#: 4359359 • Tattoo: 206M
5/8 SM 3/8 AN • Homozygous Polled • Heterozygous Black

TEHAMA PATRIARCH F028

sire: CCR BEDROCK 5171J

CCR MS 2073 COWBOY 5171C

GIBBS 7382E BROAD RANGE

dam: LRS MS BROADRANGE 206K

LRS MS HIGH POINT 0118H



Act. BW	82
BW Ratio	103
Adj WW	729
WW Ratio	110
Adj YW	1223
YW Ratio	102
WDA	3.24
ADG	3.14
Adj SC	37.4

Rank	CE	BW	WW	YW	ADG	MCE	Milk	STAY	DOC	CW	Marb	BF	REA	API	TI
	11.8	-0.4	88.1	147.6	0.37	7.0	26.6	15.3	14.7	48.7	0.57	0.011	0.57	150.9	93.3
65	45	15	10	4	50	30	45	25	15	25	99	70	25	15	

Heterozygous black. Another first calf heifer bringing in the goods with over a 700 lbs weaning weight.

81

LRS 6008M

BD: 3/28/24 • ASA#: 4359595 • Tattoo: 6008M
3/4 SM 1/4 AN • Homozygous Polled • Homozygous Black

GIBBS 7382E BROAD RANGE

sire: LRS 030K

LRS MS FRANCHISE 030H

J BAR J NIGHTRIDE 225Z

dam: LRS MS NIGHTRIDE 6008D

LRS MS AXIS 228Z



Act. BW	92
BW Ratio	107
Adj WW	644
WW Ratio	98
Adj YW	1169
YW Ratio	96
WDA	3.30
ADG	3.30
Adj SC	34.9

Rank	CE	BW	WW	YW	ADG	MCE	Milk	STAY	DOC	CW	Marb	BF	REA	API	TI
	12.1	1.5	81.9	127.9	0.29	6.5	20.7	15.5	9.5	35.4	0.20	-0.047	0.85	125.1	78.1
60	80	30	30	35	60	80	45	85	45	80	45	25	65	65	

square made, big topped bull backed who is also just an end of march calf that keeps coming on.

83

LRS 774M

BD: 3/16/24 • ASA#: 4359492 • Tattoo: 774M
5/8 SM 3/8 AN • Homozygous Polled • Homozygous Black

CCR ABILENE 6018C

sire: CCR WACO 4142G

CCR MS CATALYST 4142B

LRS ICONIC 303C

dam: LRS MS ICONIC 774E

LRS MS SHARPERIMAGE 234Z



Act. BW	88
BW Ratio	102
Adj WW	616
WW Ratio	97
Adj YW	1277
YW Ratio	109
WDA	3.48
ADG	4.16
Adj SC	39.7

Rank	CE	BW	WW	YW	ADG	MCE	Milk	STAY	DOC	CW	Marb	BF	REA	API	TI
	12.6	1.2	87.0	140.9	0.34	8.9	18.6	15.1	14.1	50.7	0.67	-0.015	0.46	153.0	92.3
50	75	15	15	10	20	90	50	30	10	15	85	90	20	15	

Big Testicles, Gaining over 4 lbs a day to ratio 109 for a year. Dam breeds up early every year maintaining a 365 day calving interval on her first 6 calves.

85

LRS 218M

BD: 2/20/24 • ASA#: 4359362 • Tattoo: 218M
1/2 SM 1/2 AN • Homozygous Polled • Homozygous Black

TEHAMA PATRIARCH F028

sire: CCR BEDROCK 5171J

CCR MS 2073 COWBOY 5171C

TEHAMA TAHOE B767

dam: LRS MS TAHOE 218K

LRS MS YELLOWSTONE 5119C



Act. BW	78
BW Ratio	99
Adj WW	670
WW Ratio	101
Adj YW	1223
YW Ratio	102
WDA	3.17
ADG	3.51
Adj SC	35.4

Rank	CE	BW	WW	YW	ADG	MCE	Milk	STAY	DOC	CW	Marb	BF	REA	API	TI
	15.4	-1.0	87.0	143.6	0.35	9.0	26.9	17.1	14.6	55.1	0.55	-0.020	0.46	158.1	93.2
20	35	15	10	10	20	30	25	25	10	25	85	90	15	15	

From a really good cow family, an excellent bull to use on a younger set of cows with his good calving ease and birthweight scores combined with great rankings for maternal calving ease, stayability, docility, and API



LASSLE RANCH SIMMENTALS

LRs 9165M

86

BD: 3/5/24 • ASA#: 4359613 • Tattoo: 9165M
PB SM • Homozygous Polled • Homozygous Black

HOOK'S GALILEO 210G

sire: **HA COVENANT 30K**

HOOK'S CERES 11C

HOOK'S EAGLE 6E

dam: **LRs MS EAGLE 9165G**

LRs MS DUAL FOCUS 213Z



Act. BW	86
BW Ratio	101
Adj WW	642
WW Ratio	101
Adj YW	1202
YW Ratio	103
WDA	3.30
ADG	3.53
Adj SC	39.1

Rank	CE	BW	WW	YW	ADG	MCE	Milk	STAY	DOC	CW	Marb	BF	REA	API	TI
	15.2	0.5	90.0	145.5	0.35	8.9	24.6	14.8	16.8	60.1	0.60	-0.063	1.18	167.9	100.1
10	35	15	10	4	10	40	60	10	1	5	70	10	10	4	

Dam has had 2 other bulls make the sales in the past and breeds right up first try every year. Really balanced genetics on paper and in the flesh and has been gaining over 3.5 lbs a day.

LRs 1179M

88

BD: 4/5/24 • ASA#: 4359535 • Tattoo: 1179M
3/4 SM 1/4 AN • Homozygous Polled • Homozygous Black

TEHAMA PATRIARCH F028

sire: **CCR ANTHEM 3355J**

CCR MS 5161 COWBOY 8636F

HOOK'S EAGLE 6E

dam: **LRs MS EAGLE 1179J**

LRs MS TOPGRADE 3015A



Act. BW	80
BW Ratio	98
Adj WW	734
WW Ratio	111
Adj YW	1168
YW Ratio	
WDA	3.29
ADG	2.71
Adj SC	37.3

Rank	CE	BW	WW	YW	ADG	MCE	Milk	STAY	DOC	CW	Marb	BF	REA	API	TI
	14.5	-2.0	81.1	124.2	0.27	9.5	29.2	21.3	13.5	24.7	0.51	-0.026	0.61	161.6	90.1
30	20	30	35	50	15	15	2	35	80	30	70	65	15	20	

Here is just an April 5th born calf and check out his WW ratio. The April born babies can't always get a YW ratio based on when we need to weigh them for the sale catalog deadlines. Traces right back to the 3015A donor cow who left us with a great set of maternal genetics.

LRs 996M

90

BD: 3/6/24 • ASA#: 4359524 • Tattoo: 996M
5/8 SM 3/8 AN • Homozygous Polled • Homozygous Black

CCR PAY DIRT 2340C

sire: **CCR POUNDER 2045F**

CCR MS 707 COWBOY 4123B

HOOK'S BALTIC 17B

dam: **LRs MS BALTIC 996G**

LRs MS DENALI 207Z



Act. BW	94
BW Ratio	110
Adj WW	627
WW Ratio	99
Adj YW	1094
YW Ratio	94
WDA	3.08
ADG	2.95
Adj SC	38.7

Rank	CE	BW	WW	YW	ADG	MCE	Milk	STAY	DOC	CW	Marb	BF	REA	API	TI
	11.3	2.2	89.3	141.1	0.32	6.8	21.9	17.9	11.3	46.2	0.39	0.007	0.24	139.0	84.7
70	90	15	15	20	55	70	20	65	20	50	95	99	45	40	

G+ and ATM Stamped pouncer son who ranks in the top 10% for WW and YW.

LRs 054M

87

BD: 3/5/24 • ASA#: 4359331 • Tattoo: 054M
1/2 SM 1/2 AN • Homozygous Polled • Homozygous Black

G A R BIG STEP K715

sire: **EZAR STEP UP 9178**

BASIN LUCY 4261

HOOK'S EAGLE 6E

dam: **LRs MS EAGLE 054H**

LRs MS ELEVATE 6020D



Act. BW	84
BW Ratio	99
Adj WW	600
WW Ratio	95
Adj YW	1241
YW Ratio	106
WDA	3.30
ADG	4.05
Adj SC	39.6

Rank	CE	BW	WW	YW	ADG	MCE	Milk	STAY	DOC	CW	Marb	BF	REA	API	TI
	12.4	0.1	93.2	157.7	0.40	10.0	22.4	14.7	14.9	66.8	0.52	0.010	1.02	149.7	94.7
55	50	10	2	2	10	65	50	20	1	30	99	10	25	10	

True F1 1/2 blood sired by Step Up and out of an Eagle daughter. Has really turned it on since weaning gaining over 4 lbs a day and ratioing 106 at a year.

LRs CBL 9M

89

BD: 3/10/24 • ASA#: 4426649 • Tattoo: 9M
5/8 SM 3/8 AN • Homozygous Polled • Homozygous Black

TEHAMA TAHOE B767

sire: **LRs RARITY 983J**

LRs MS EAGLE 983G

TJ FRANCHISE 451D

dam: **CBL MS J241**

CBL MS NITE RIDE D46



Act. BW	80
BW Ratio	104
Adj WW	573
WW Ratio	91
Adj YW	1094
YW Ratio	99
WDA	2.86
ADG	3.29
Adj SC	32.4

Rank	CE	BW	WW	YW	ADG	MCE	Milk	STAY	DOC	CW	Marb	BF	REA	API	TI
	12.5	3.0	90.9	148.6	0.36	4.1	21.4	11.1	18.6	67.9	0.46	-0.033	1.01	132.7	88.3
55	95	10	10	10	90	75	85	3	1	35	55	10	55	25	

G+ and ATM for this calf who has been catching up since we got him on feed. Will be a little larger framed bull when it is said and done and sure gets out and tracks well.

LRs CBL 36M

91

BD: 3/21/24 • ASA#: 4426663 • Tattoo: 36M
5/8 SM 3/8 AN • Homozygous Polled • Homozygous Black

LRs BADLANDS 401F

sire: **LRs 739K**

LRs MS ICONIC 739E

LRs CRAFTSMAN 120E

dam: **CBL MS CRAFTSMAN G609**

CLASSIC BLACKBIRD 603



Act. BW	70
BW Ratio	-
Adj WW	620
WW Ratio	-
Adj YW	1067
YW Ratio	-
WDA	3.06
ADG	2.82
Adj SC	35.5

Rank	CE	BW	WW	YW	ADG	MCE	Milk	STAY	DOC	CW	Marb	BF	REA	API	TI
	14.1	2.5	93.4	149.4	0.35	8.3	24.8	16.3	14.4	50.0	0.49	-0.029	0.63	147.9	91.3
35	90	10	5	10	30	45	35	25	10	30	70	60	30	20	

Was a twin and started a little bit behind the eight ball at only 70 lbs. Long sided and another one who will end of being a little larger framed. Great set of testicles under him already.



92

LRS 810M

BD: 3/18/24 • ASA#: 4359497 • Tattoo: 810M
3/4 SM 1/4 AN • Homozygous Polled • Homozygous Black

LRS BADLANDS 401F

sire: LRS FASTBALL 014J

LRS MS CLASS ACT 437B

LRS TOP TEN 104A

dam: LRS MS TOP TEN 810F

LRS MS INNOVATION 658D



Act. BW	78
BW Ratio	91
Adj WW	684
WW Ratio	104
Adj YW	1258
YW Ratio	103
WDA	3.52
ADG	3.62
Adj SC	40.8

Rank	CE	BW	WW	YW	ADG	MCE	Milk	STAY	DOC	CW	Marb	BF	REA	API	TI
60	12.0	-0.4	83.2	129.9	0.29	7.1	22.1	14.8	9.7	61.4	0.37	-0.082	1.00	137.0	85.8
60	45	25	25	35	50	70	50	85	3	50	4	10	45	35	

104 WW ratio, 103 YW ratio, gaining over 3..5 lbs a day with a huge scrotal. Dam is ratioing 105 for both WW and YW on her first 5 calves and she is also the dam of the lot 131 bred heifer.

94

LRS 171M

BD: 3/16/24 • ASA#: 4359350 • Tattoo: 171M
1/2 SM 1/2 AN • Homozygous Polled • Homozygous Black

CCR POUNDER 2045F

sire: CCR NATIONWIDE 4503J

CCR MS NATIONAL 4503B

MCCONNELL ALTITUDE 3114

dam: LRS MS ALTITUDE 171J

LRS MS TOPGRADE 3021A



Act. BW	78
BW Ratio	96
Adj WW	668
WW Ratio	101
Adj YW	1164
YW Ratio	101
WDA	3.20
ADG	3.14
Adj SC	38.7

Rank	CE	BW	WW	YW	ADG	MCE	Milk	STAY	DOC	CW	Marb	BF	REA	API	TI
55	12.3	-1.5	76.7	126.7	0.31	7.7	26.9	19.2	12.9	29.8	0.78	0.021	0.08	166.7	92.1
55	25	50	35	25	40	30	10	45	60	10	99	99	10	15	

668 lb weaning weight whose young dam is sporting a 104 WW ratio on her first two calves. She is not a big cow but has weaned over 50% of her body weight with those first 2 calves. He is just a little tank.

96

LRS 9154M

BD: 3/23/24 • ASA#: 4359608 • Tattoo: 9154M
5/8 SM 3/8 AN • Homozygous Polled • Homozygous Black

WS PROCLAMATION E202

sire: 307 BACKROADS 736G

PANNELL MISS 736

HOOK'S EAGLE 6E

dam: LRS MS EAGLE 9154G

LRS MS DUAL FOCUS 213Z



Act. BW	76
BW Ratio	88
Adj WW	665
WW Ratio	105
Adj YW	1047
YW Ratio	90
WDA	3.05
ADG	2.42
Adj SC	36.1

Rank	CE	BW	WW	YW	ADG	MCE	Milk	STAY	DOC	CW	Marb	BF	REA	API	TI
5	18.3	-3.0	68.6	93.6	0.16	10.9	27.1	16.8	9.7	10.5	0.44	-0.045	0.63	148.6	81.9
5	10	80	95	99	5	25	30	85	99	40	45	60	30	50	

Heifer Bull. Dam has had 2 other bulls make the sale in the past years and provides some early growth as she is ratioing 108 for WW on her first 4 calves.

97

LRS 133M

BD: 3/15/24 • ASA#: 4359343 • Tattoo: 133M
3/4 SM 1/4 AN • Homozygous Polled • Homozygous Black

HOOK'S GALILEO 210G

sire: HA COVENANT 30K

HOOK'S CERES 11C

TEHAMA TAHOE B767

dam: LRS MS TAHOE 133J

LRS MS TOPGRADE 303A



Act. BW	86
BW Ratio	105
Adj WW	711
WW Ratio	107
Adj YW	1275
YW Ratio	111
WDA	3.48
ADG	3.56
Adj SC	37.7

Rank	CE	BW	WW	YW	ADG	MCE	Milk	STAY	DOC	CW	Marb	BF	REA	API	TI
60	12.0	0.9	92.2	148.4	0.35	6.6	25.9	18.5	17.0	58.5	0.55	-0.053	1.35	156.5	95.0
60	70	10	10	10	55	35	15	10	4	25	30	1	20	10	

Over 700 lbs when we brought him home this fall and kept on cranking to ratio 111 at a year from a really nice young cow with a great udder and feet who is a direct daughter of the 303A cow.

93

LRS 885M

BD: 4/2/24 • ASA#: 4359505 • Tattoo: 885M
PB SM • Homozygous Polled • Homozygous Black

LRS BADLANDS 401F

sire: LRS FASTBALL 014J

LRS MS CLASS ACT 437B

HOOK'S BALTIC 17B

dam: LRS MS BALTIC 885F

LRS MS ADJUSTER 361A



Act. BW	84
BW Ratio	98
Adj WW	671
WW Ratio	106
Adj YW	1106
YW Ratio	95
WDA	3.20
ADG	2.74
Adj SC	37.6

Rank	CE	BW	WW	YW	ADG	MCE	Milk	STAY	DOC	CW	Marb	BF	REA	API	TI
50	11.5	0.7	87.6	133.2	0.28	6.0	23.4	17.7	14.9	36.9	0.39	-0.086	1.27	155.2	92.6
50	40	20	20	30	50	50	25	15	20	20	30	3	20	15	

Dam is ratioing 109 for WW on her first 5 calves and she is sired by LRS Adjuster, who bred cows until he was 10 years old. Should improve carcass quality with his marbling and REA scores.

95

LRS CBL 11M

BD: 3/10/24 • ASA#: 4426650 • Tattoo: 11M
1/2 SM 1/2 AN • Homozygous Polled • Homozygous Black

TEHAMA TAHOE B767

sire: LRS RARITY 983J

LRS MS EAGLE 983G

HOOK'S BALTIC 17B

dam: CBL MS BALTIC G349

CBA MS CEDAR RIDGE B34



Act. BW	83
BW Ratio	104
Adj WW	679
WW Ratio	108
Adj YW	948
YW Ratio	86
WDA	2.90
ADG	1.71
Adj SC	35.4

Rank	CE	BW	WW	YW	ADG	MCE	Milk	STAY	DOC	CW	Marb	BF	REA	API	TI
70	11.1	3.4	90.2	145.1	0.34	4.1	22.0	14.3	16.1	61.0	0.30	-0.034	1.00	127.0	83.2
70	99	10	10	10	90	70	55	15	3	65	55	10	65	45	

Just shy of 700 lbs at weaning which early explosive growth is common with the Rarity sired offspring and he is also a bull that will add REA to his offspring. He got sick on this fall and that is why his ADG and YW is so low, but he is catching back up to the rest now.



98

LRS CBL 30M

BD: 3/19/24 • ASA#: 4426661 • Tattoo: 30M
5/8 SM 3/8 AN • Polled • Homozygous Black

CCR PAY DIRT 2340C

sire: CCR POUNDER 2045F

CCR MS 707 COWBOY 4123B

WS LIGHT SPEED E230

dam: CBL MS LIGHT SPEED G309

CBL MS ROBUST C85



Act. BW	81
BW Ratio	101
Adj WW	650
WW Ratio	104
Adj YW	1078
YW Ratio	98
WDA	3.09
ADG	2.71
Adj SC	35.9

Rank	CE	BW	WW	YW	ADG	MCE	Milk	STAY	DOC	CW	Marb	BF	REA	API	TI
60	12.1	-1.7	73.5	110.6	0.23	7.1	29.5	19.9	16.9	15.3	0.48	-0.003	0.40	149.9	83.7
60	25	60	65	75	50	15	5	10	95	35	90	95	25	40	

Pounder son who came in off the cow at 650 lbs to ratio 104. Long sided and clean fronted with good docility and stayability.

LASSLE RANCH SIMMENTALS

LRS 515M

99

BD: 3/26/24 • ASA#: 4359478 • Tattoo: 515M
1/2 SM 1/2 AN • Homozygous Polled • Homozygous Black

S POWERPOINT 843

sire: **KS POINT TAKEN H579**

KS FANNIE F74

BDV DATELINE 150Y

dam: **LRS MS DATELINE 515C**

LRS MS OLD SCHOOL 157Y



Act. BW	86
BW Ratio	100
Adj WW	699
WW Ratio	106
Adj YW	1181
YW Ratio	97
WDA	3.41
ADG	3.03
Adj SC	40.3

Rank EPDs	CE	BW	WW	YW	ADG	MCE	Milk	STAY	DOC	CW	Marb	BF	REA	API	TI
	9.7	1.4	68.7	106.0	0.23	5.5	27.6	20.8	16.5	18.2	0.46	-0.016	0.47	140.3	76.2
	85	75	80	75	75	25	3	10	90	35	85	85	40	70	

Heterozygous Black. End of march bull out of a 9 year old cow who has a been a great producer averaging 105 for WW on and 107 for YW. He is young but you will appreciate all the good he is exhibiting.

LRS 235M

101

BD: 2/19/24 • ASA#: 4359366 • Tattoo: 235M
5/8 SM 3/8 AN • Homozygous Polled • Homozygous Black

CCR ABILENE 6018C

sire: **CCR WACO 4142G**

CCR MS CATALYST 4142B

LRS FALCON 442G

dam: **LRS MS FALCON 235K**

LRS MS DATELINE 454B



Act. BW	72
BW Ratio	91
Adj WW	657
WW Ratio	99
Adj YW	1126
YW Ratio	94
WDA	2.95
ADG	2.98
Adj SC	36.3

Rank EPDs	CE	BW	WW	YW	ADG	MCE	Milk	STAY	DOC	CW	Marb	BF	REA	API	TI
	17.3	-3.1	75.2	119.4	0.28	9.7	22.2	14.9	14.5	28.6	0.53	-0.029	0.63	154.1	88.3
	10	10	55	45	40	15	65	50	25	65	25	70	60	20	25

Heifer Bull. Out of a Falcon sires first calf heifer and Waco and still weaned off over 650 lbs for this heifer bull candidate.

LRS CBL 54M

103

BD: 4/1/24 • ASA#: 4426669 • Tattoo: 54M
5/8 SM 3/8 AN • Homozygous Polled • Homozygous Black

CLRS GUARDIAN 317G

sire: **KS MR GUARDIAN K803**

KS HALA H996

A A R TEN X 7008 S A

dam: **CBL MS TEN X D456**

LRS MS OLLIE 0123X



Act. BW	77
BW Ratio	96
Adj WW	627
WW Ratio	100
Adj YW	962
YW Ratio	87
WDA	2.89
ADG	2.12
Adj SC	34.6

Rank EPDs	CE	BW	WW	YW	ADG	MCE	Milk	STAY	DOC	CW	Marb	BF	REA	API	TI
	15.1	-0.2	78.2	117.3	0.24	7.1	20.5	14.5	8.3	43.7	0.58	-0.027	0.72	147.6	86.8
	25	45	45	50	70	50	80	55	90	20	20	70	45	30	30

Square hipped bull who is still above average for the growth traits with his good calving ease ranking.

LRS 351M

105

BD: 3/7/24 • ASA#: 4359387 • Tattoo: 351M
PB SM • Homozygous Polled • Homozygous Black

HOOK'S GALILEO 210G

sire: **HA COVENANT 30K**

HOOK'S CERES 11C

LRS ADJUSTER 793Y

dam: **LRS MS ADJUSTER 351A**

LRS MS OLIE 078X



Act. BW	80
BW Ratio	94
Adj WW	558
WW Ratio	88
Adj YW	1111
YW Ratio	95
WDA	2.97
ADG	3.47
Adj SC	37.2

Rank EPDs	CE	BW	WW	YW	ADG	MCE	Milk	STAY	DOC	CW	Marb	BF	REA	API	TI
	14.1	-1.4	73.8	119.0	0.28	7.5	25.9	23.5	13.4	28.4	0.39	-0.083	0.78	168.7	87.2
	20	10	70	45	30	25	30	1	30	50	20	30	70	10	25

Dam is a coming 12 year old cow who is set to calve again this spring. She might be slowing down a bit as he come in a little lighter this fall. Check out his stayability EPD. The daughters should last forever and he will keep getting better with time.

LRS CBL 6M

100

BD: 3/5/24 • ASA#: 4426646 • Tattoo: 6M
1/2 SM 1/2 AN • Homozygous Polled • Homozygous Black

TEHAMA TAHOE B767

sire: **LRS RARITY 983J**

LRS MS EAGLE 983G

ASR AMERICAN PROUD H0301

dam: **CBL MS AM. PROUD K492**

CBL MS EFFECTIVE D306



Act. BW	76
BW Ratio	103
Adj WW	668
WW Ratio	107
Adj YW	1111
YW Ratio	101
WDA	2.97
ADG	2.82
Adj SC	36.1

Rank EPDs	CE	BW	WW	YW	ADG	MCE	Milk	STAY	DOC	CW	Marb	BF	REA	API	TI
	12.7	0.6	95.5	154.7	0.37	5.5	24.3	17.0	16.2	67.7	0.43	-0.042	1.30	149.9	94.1
	50	60	4	3	4	75	50	25	15	1	40	45	1	25	10

Rarity x American Proud x Effective out of a first calf heifer who weaned him off at over 650lbs. Based on his pedigree, no surprise he is in the top percentile rankings for growth and REA.

LRS 509M

102

BD: 3/26/24 • ASA#: 4359477 • Tattoo: 509M
1/2 SM 1/2 AN • Homozygous Polled • Homozygous Black

S POWERPOINT 843

sire: **KS POINT TAKEN H579**

KS FANNIE F74

PA FULL POWER 1208

dam: **LRS MS FULL POWER 509C**

LRS MS ADJUSTER 351A



Act. BW	84
BW Ratio	98
Adj WW	658
WW Ratio	104
Adj YW	1110
YW Ratio	95
WDA	3.21
ADG	2.84
Adj SC	41.3

Rank EPDs	CE	BW	WW	YW	ADG	MCE	Milk	STAY	DOC	CW	Marb	BF	REA	API	TI
	10.4	-1.3	70.9	110.0	0.24	3.1	28.6	20.9	16.0	10.6	0.54	-0.028	0.38	152.1	83.3
	80	30	70	65	70	95	20	3	15	99	25	70	95	25	45

Dam is coming 10 years old and still here. This is the 3rd or 4th bull that would have an LRS Adjuster sired granddam. They just last and it shows with his top 3% ranking for stayability. Dam is ratioing 104 for WW. She has been a calf raiser.

LRS CBL 7M

104

BD: 3/8/24 • ASA#: 4426647 • Tattoo: 7M
PB SM • Homozygous Polled • Homozygous Black

HOOK'S GALILEO 210G

sire: **HA COVENANT 30K**

HOOK'S CERES 11C

LRS BITCOIN 437H

dam: **CBL MS BITCOIN K472**

CBL MS TOP TEN F38



Act. BW	77
BW Ratio	104
Adj WW	648
WW Ratio	103
Adj YW	1187
YW Ratio	107
WDA	3.05
ADG	3.41
Adj SC	34.3

Rank EPDs	CE	BW	WW	YW	ADG	MCE	Milk	STAY	DOC	CW	Marb	BF	REA	API	TI
	11.6	0.9	85.1	142.3	0.36	6.4	23.9	21.9	15.1	53.9	0.49	-0.028	0.85	168.3	92.7
	50	45	25	10	3	45	45	2	15	2	10	99	55	10	15

Out of a first calf heifer this Covenant son has really been coming on this winter. Weaned off just shy of 650 lbs his mom did a great job her first time out the gate.

LRS CBL 28M

106

BD: 3/16/24 • ASA#: 4426659 • Tattoo: 28M
1/2 SM 1/2 AN • Homozygous Polled • Homozygous Black

TEHAMA TAHOE B767

sire: **LRS RARITY 983J**

LRS MS EAGLE 983G

WS PROCLAMATION E202

dam: **CBL J291**

CBA MS FULL POWER D336



Act. BW	74
BW Ratio	96
Adj WW	604
WW Ratio	96
Adj YW	1181
YW Ratio	107
WDA	3.11
ADG	3.65
Adj SC	33.7

Rank EPDs	CE	BW	WW	YW	ADG	MCE	Milk	STAY	DOC	CW	Marb	BF	REA	API	TI
	12.1	1.1	98.4	162.2	0.40	5.0	23.2	16.3	18.6	62.4	0.69	0.008	0.85	161.3	100.5
	60	70	2	2	2	80	60	35	3	2	15	95	25	15	3

Dam is a really nice young proclamation daughter. Gaining over 3.5 lbs a day and ratioing 107 for YW, he has really been coming on this winter. Good combination of growth and maternal in this one.

107

LRS CBL 2M

BD: 2/29/24 • ASA#: 4426644 • Tattoo: 2M
5/8 SM 3/8 AN • Homozygous Polled • Homozygous Black

TEHAMA TAHOE B767

sire: **LRS RARITY 983J**

LRS MS EAGLE 983G

NLC ZUGABE 11H

dam: **CBL MS ZUGABE K632**

CBL MS T 10 E47



Act. BW	68
BW Ratio	92
Adj WW	613
WW Ratio	98
Adj YW	1066
YW Ratio	96
WDA	2.75
ADG	2.88
Adj SC	35.4

Rank	CE	BW	WW	YW	ADG	MCE	Milk	STAY	DOC	CW	Marb	BF	REA	API	TI
	12.7	-2.0	74.8	115.4	0.25	5.1	24.9	19.4	16.2	40.0	0.49	-0.051	0.93	152.7	85.8
50	20	55	55	60	80	45	10	15	30	30	30	15	20	35	

Out of a first calf heifer and was just 68 lbs when he hit the ground. Would be a great option for a group of young cows with his lower BW EPD and ranks well for marbling and ribeye too.

109

LRS CBL 65M

BD: 4/4/24 • ASA#: 4426671 • Tattoo: 65M
5/8 SM 3/8 AN • Polled • Homozygous Black

LRS BADLANDS 401F

sire: **LRS 739K**

LRS MS ICONIC 739E

LRS ELEVATE 213B

dam: **CBL MS ELEVATE G89**

CBA MS ARSENAL E578



Act. BW	81
BW Ratio	101
Adj WW	654
WW Ratio	104
Adj YW	1162
YW Ratio	
WDA	3.30
ADG	3.18
Adj SC	37.8

Rank	CE	BW	WW	YW	ADG	MCE	Milk	STAY	DOC	CW	Marb	BF	REA	API	TI
	12.5	1.7	93.2	143.6	0.31	7.4	27.2	12.2	10.8	61.2	0.51	-0.052	1.10	139.8	93.0
55	80	10	10	25	45	25	75	75	3	30	30	4	40	15	

April 4th young bull here and his dam's other bull calf went through the sale last year as well. She is ratiing 104 for WW and 111 for YW on her report card which supports his ATM ranking.

110

LRS 270M

BD: 2/27/24 • ASA#: 4359375 • Tattoo: 270M
5/8 SM 3/8 AN • Homozygous Polled • Homozygous Black

TEHAMA PATRIARCH F028

sire: **CCR ANTHEM 3355J**

CCR MS 5161 COWBOY 8636F

HOOK'S EAGLE 6E

dam: **LRS MS EAGLE 270K**

LRS MS CAPITALIST 884F



Act. BW	82
BW Ratio	103
Adj WW	631
WW Ratio	95
Adj YW	1193
YW Ratio	99
WDA	3.03
ADG	3.51
Adj SC	38.7

Rank	CE	BW	WW	YW	ADG	MCE	Milk	STAY	DOC	CW	Marb	BF	REA	API	TI
	15.3	-1.3	81.2	131.2	0.31	8.2	24.7	19.1	16.3	32.2	0.34	-0.002	0.83	149.1	85.2
20	30	30	25	25	30	45	10	15	55	55	90	25	25	35	

Nice made CCR anthem son out of a first calf heifer. We have a few full sisters to his dam, and they are all good. Granddam is the 884F cow who is a calf raising machine and the dam of lot 11. Been gaining 3.5 lbs a day and should leave a great set of replacement heifers.

111

LRS 269M

BD: 2/25/24 • ASA#: 4359374 • Tattoo: 269M
5/8 SM 3/8 AN • Homozygous Polled • Homozygous Black

TEHAMA PATRIARCH F028

sire: **CCR ANTHEM 3355J**

CCR MS 5161 COWBOY 8636F

HOOK'S EAGLE 6E

dam: **LRS MS EAGLE 269K**

LRS MS CAPITALIST 884F



Act. BW	82
BW Ratio	103
Adj WW	679
WW Ratio	103
Adj YW	1080
YW Ratio	90
WDA	2.90
ADG	2.55
Adj SC	36.1

Rank	CE	BW	WW	YW	ADG	MCE	Milk	STAY	DOC	CW	Marb	BF	REA	API	TI
	13.7	-0.5	87.8	127.2	0.25	7.4	25.3	14.7	15.3	35.3	0.39	-0.053	0.93	140.3	89.1
40	40	15	30	60	45	40	50	20	45	50	30	15	40	25	

Full brother to Lot 110 as they are both sired by Anthem out of a set of flush sisters. They are similar which is no surprise and backed by the great cow. Get a uniform calf crop and take them both home.

108

LRS CBL 8M

BD: 3/9/24 • ASA#: 4426648 • Tattoo: 8M
PB SM • Homozygous Polled • Homozygous Black

HOOK'S GALILEO 210G

sire: **HA COVENANT 30K**

HOOK'S CERES 11C

LRS FALCON 442G

dam: **CBL MS FALCON K222**

CBL MS 1018 C575



Act. BW	71
BW Ratio	96
Adj WW	592
WW Ratio	94
Adj YW	1132
YW Ratio	102
WDA	2.84
ADG	3.41
Adj SC	36.8

Rank	CE	BW	WW	YW	ADG	MCE	Milk	STAY	DOC	CW	Marb	BF	REA	API	TI
	15.0	-2.1	76.0	123.7	0.30	7.7	23.9	21.3	16.3	25.9	0.59	-0.062	0.91	179.3	94.5
15	10	60	35	20	25	45	3	10	60	5	70	45	3	10	

Really high API Index as he combines moderate calving ease and birthweight with great stayability and marbling predictions. He is out of a first calf heifer and her dam has had numerous bulls make the sale. Good cow family.



THE DOG DAYS OF SUMMER



Lot 110



Lot 111

LASSLE RANCH SIMMENTALS

LRS CBL 50M

112

BD: 3/30/24 • ASA#: 4426666 • Tattoo: 50M
1/2 SM 1/2 AN • Homozygous Polled • Homozygous Black

TJ GOLD 274G
sire: **CHSR MIDAS 124K**
KS FRIDAY F955
KESSLERS COMMODORE 6516
dam: **OPP BLACKBIRD J07**
OPP BLACKBIRD E70



Act. BW	84
BW Ratio	108
Adj WW	673
WW Ratio	107
Adj YW	1060
YW Ratio	96
WDA	3.00
ADG	2.47
Adj SC	36.5

Rank	CE	BW	WW	YW	ADG	MCE	Milk	STAY	DOC	CW	Marb	BF	REA	API	TI
	11.4	-1.5	90.4	134.9	0.28	7.0	26.4	17.6	13.7	43.2	0.50	-0.015	0.27	150.6	92.9
70	25	10	20	40	50	30	20	35	25	30	85	99	25	15	

End of march bull calf who adjusted to 673 lbs of the cow this fall. 1/2 blood out of a purebred angus cow backed by the G+ and ATM stamps

LRS 186M

113

BD: 3/14/24 • ASA#: 4359355 • Tattoo: 186M
5/8 SM 3/8 AN • Homozygous Polled • Homozygous Black

CCR PAY DIRT 2340C
sire: **CCR POUNDER 2045F**
CCR MS 707 COWBOY 4123B
LRS FALCON 442G
dam: **LRS MS RAINEE 186J**
LRS MS ALTITUDE 881F



Act. BW	80
BW Ratio	98
Adj WW	652
WW Ratio	98
Adj YW	1114
YW Ratio	97
WDA	3.06
ADG	2.93
Adj SC	38.6

Rank	CE	BW	WW	YW	ADG	MCE	Milk	STAY	DOC	CW	Marb	BF	REA	API	TI
	13.7	-3.0	77.7	129.2	0.32	8.1	26.9	21.5	13.9	21.8	0.26	-0.003	0.49	149.2	82.9
40	10	45	30	20	30	30	2	30	85	70	90	85	25	45	

One of Harper's bulls in the sale and lots to like in this Pounder son. Always been eye catching and is really balanced both on the hoof and in his EPD's.

LRS CBL 33M

114

BD: 3/24/24 • ASA#: 4426662 • Tattoo: 33M
1/2 SM 1/2 AN • Homozygous Polled • Homozygous Black

CCR POUNDER 2045F
sire: **CCR PRIME TIME 6477H**
CCR MS 3370 BOLDR 6477D
WS LIGHT SPEED E230
dam: **CBL MS LIGHT SPEED G759**
CBL MS 810Z D706



Act. BW	77
BW Ratio	96
Adj WW	597
WW Ratio	95
Adj YW	1129
YW Ratio	102
WDA	3.11
ADG	3.35
Adj SC	35.2

Rank	CE	BW	WW	YW	ADG	MCE	Milk	STAY	DOC	CW	Marb	BF	REA	API	TI
	14.5	-1.2	74.6	120.5	0.29	8.9	25.9	11.4	15.5	35.0	0.69	0.011	0.64	148.0	89.2
30	30	55	45	35	20	35	85	20	45	15	99	60	30	25	

Stout made and moderate with a nice deep quarter who has been coming on this fall with his 102 YW Ratio.

LRS CBL 53M

115

BD: 3/31/24 • ASA#: 4426668 • Tattoo: 53M
5/8 SM 3/8 AN • Homozygous Polled • Homozygous Black

CLRS GUARDIAN 317G
sire: **KS MR GUARDIAN K803**
KS HALA H996
LRS TOP TEN 104A
dam: **CBL MS TOP TEN F488**
CBL MS UPGRADE B374

Act. BW	80
BW Ratio	100
Adj WW	577
WW Ratio	92
Adj YW	1034
YW Ratio	94
WDA	2.94
ADG	2.88
Adj SC	34.5

Rank	CE	BW	WW	YW	ADG	MCE	Milk	STAY	DOC	CW	Marb	BF	REA	API	TI
	11.4	0.4	73.5	114.0	0.25	4.0	18.6	14.8	7.5	27.4	0.26	-0.033	0.57	123.8	74.9
70	60	60	60	60	90	90	50	95	70	70	55	70	70	75	

Dam is reporting a 106 WW ratio and a 103 YW ratio on her cow summary. Just a March 30th born bull sired by a Guardian son from Kenner Simmentals.

LRS 147M

116

BD: 3/17/24 • ASA#: 4359348 • Tattoo: 147M
1/2 SM 1/2 AN • Homozygous Polled • Homozygous Black

TEHAMA PATRIARCH F028
sire: **CCR BEDROCK 5171J**
CCR MS 2073 COWBOY 5171C
TEHAMA TAHOE B767
dam: **LRS MS TAHOE 147J**
LRS MS GRAVITY 749E



Act. BW	82
BW Ratio	100
Adj WW	612
WW Ratio	92
Adj YW	1134
YW Ratio	99
WDA	3.07
ADG	3.30
Adj SC	35.8

Rank	CE	BW	WW	YW	ADG	MCE	Milk	STAY	DOC	CW	Marb	BF	REA	API	TI
	12.5	-1.7	74.9	127.5	0.33	6.7	24.2	18.3	11.0	26.1	0.48	-0.018	0.48	150.6	85.1
55	25	55	30	15	55	50	15	70	75	35	85	85	25	35	

Log sided and well balanced from nose to tail. Top 25% for API and a G+ ranking to go with it.

LRS CBL 1M

117

BD: 3/1/24 • ASA#: 4426643 • Tattoo: 1M
1/2 SM 1/2 AN • Homozygous Polled • Homozygous Black

TEHAMA TAHOE B767
sire: **LRS RARITY 983J**
LRS MS EAGLE 983G
LRS TOPSHELF 902F
dam: **CBL MS TOP SHELF K322**
CBL MS CAPITALIST E147



Act. BW	71
BW Ratio	96
Adj WW	562
WW Ratio	90
Adj YW	1005
YW Ratio	91
WDA	2.57
ADG	2.82
Adj SC	33.9

Rank	CE	BW	WW	YW	ADG	MCE	Milk	STAY	DOC	CW	Marb	BF	REA	API	TI
	12.2	-1.2	80.0	124.0	0.28	5.4	21.3	14.7	14.9	60.1	0.38	-0.035	0.79	136.0	83.8
60	30	35	40	40	75	75	50	20	3	50	55	35	50	40	

Out of a first calf Top Shelf sired heifer and Rarity with a G+ score.

Thank You!

We need to thank our family and friends that help throughout the year whenever we call and ask... Lyle Armstrong, Gary Miller, Jim Trangmoe, Dave Barnick, Alan Mcrae, Doug Goroski, and Gary Arneson. Arvid Corneliusen and Melvin Gaub for helping take care of fences and keeping an eye on the cows and calves all summer. Thanks to Vic's Vittles and Jacob Lundstrum for the great meals. The crew at Bravera Bank.

Kristin Aus, Marta Asche and Devyn Kilburn for helping clerk on sale day. Will Malcolm and Sleeping Giant Genetics for the embryo work. Bobby Wellner Cattle Services for clipping bulls. Rod and Marta Asche (Cracker Box Livestock) for being a great partner on some of the bulls in the sale. CHS Farmers Elevator for sponsoring the sale day meal. And last but not least, Emily Brinkman at Generation 6 Marketing for not only the catalog but assisting with all our ads and marketing efforts.

118

LRS 2146M

BD: 2/22/24 • ASA#: 4359545 • Tattoo: 2146M
5/8 SM 3/8 AN • Homozygous Polled • Homozygous Black

TEHAMA PATRIARCH F028

sire: **CCR BEDROCK 5171J**

CCR MS 2073 COWBOY 5171C

ELLIOTT F524

dam: **LRS MS MIDTOWNER 2146K**

LRS MS INNOVATION 728E



Act. BW	72
BW Ratio	93
Adj WW	607
WW Ratio	92
Adj YW	1092
YW Ratio	91
WDA	2.79
ADG	3.09
Adj SC	36.5

Rank	CE	BW	WW	YW	ADG	MCE	Milk	STAY	DOC	CW	Marb	BF	REA	API	TI
	15.6	-3.3	68.9	110.9	0.26	9.4	25.6	15.7	10.9	53.3	0.62	-0.019	0.67	156.0	86.8
	20	10	75	65	55	15	40	40	70	10	20	85	55	20	30

Heifer Bull. We were going to picture this bull, but somehow missed getting him sorted off on picture day and then the weather turned kind of sour. Really good heifer bull option with an outcross pedigree on the bottom side.

120

LRS 997M

BD: 4/2/24 • ASA#: 4359525 • Tattoo: 997M
PB SM • Homozygous Polled • Homozygous Black

LRS BADLANDS 401F

sire: **LRS FASTBALL 014J**

LRS MS CLASS ACT 437B

LRS ICONIC 303C

dam: **LRS MS ICONIC 997G**

LRS MS ELEVATE 6021D



Act. BW	88
BW Ratio	102
Adj WW	620
WW Ratio	118
Adj YW	1047
YW Ratio	
WDA	3.01
ADG	2.69
Adj SC	38.1

Rank	CE	BW	WW	YW	ADG	MCE	Milk	STAY	DOC	CW	Marb	BF	REA	API	TI
	9.6	1.6	91.0	141.3	0.31	5.7	26.2	17.6	13.3	60.9	0.49	-0.042	1.16	157.0	95.1
	75	60	15	10	15	55	25	30	30	1	10	95	10	15	10

75% of our sale order is random, but I always kind of choose a bull to end the sale with. Just an April 2nd calf, we put his mom into our donor program this last spring based on her production, phenotype, and ties into a little different cow family. Give him a chance to grow up and he is going to be a great bull. He is just an April calf.

119

LRS 063M

BD: 3/27/24 • ASA#: 4359334 • Tattoo: 063M
PB SM • Homozygous Polled • Homozygous Black

GIBBS 7382E BROAD RANGE

sire: **LRS 030K**

LRS MS FRANCHISE 030H

LRS BADLANDS 401F

dam: **LRS MS BADLANDS 063H**

LRS MS ELEVATE 6018D



Act. BW	80
BW Ratio	95
Adj WW	686
WW Ratio	108
Adj YW	1169
YW Ratio	100
WDA	3.29
ADG	3.05
Adj SC	35.3

Rank	CE	BW	WW	YW	ADG	MCE	Milk	STAY	DOC	CW	Marb	BF	REA	API	TI
	15.7	-0.8	72.4	105.1	0.20	9.5	23.8	12.4	11.0	14.5	0.47	-0.024	0.81	148.6	86.4
	10	15	75	75	85	10	45	85	60	95	15	99	65	25	30

Heifer bull. Purebred heifer bull right at the end of the sale and weaned off at an adjusted 686 lbs for this end of march born bull.



BOBBY WELLNER (BULL CLIPPER) AND SPIKE HANGING OUT



IN MEMORY OF
Laverne Hoffer

Last year, just a few weeks after the bull sale we lost a dear friend, neighbor, and familiar face at our clerk's table. LaVonne Hoffer helped to clerk our sale for as long as we can remember, back to when it was held at Glendive Livestock. LaVonne's gift of conversation meant that no one was a stranger for long and she was a friendly face that greeted everyone as they checked in to get their buyer number. LaVonne will be missed and remembered by us all at the sale this year.

LASSLE RANCH SIMMENTALS

Bred Heifers



Lot 121



Lot 122

As mentioned in the welcome letter it has been a few years since we have sold some females in our sale, and we bred some extra heifers with the full intention as long as the cows bred up, we would offer some for sale. We synchronize all the heifers and time breed them AI. We know that by time breeding them, we do give up some first service conception rate and so we have decided to let all the 2nd service Heifers with either a sexed heifer calf or unknown calf sex, as well as all the third cycle bred heifers go. No other sort was done. They have not been treated any differently than the rest of our bred heifers remaining out on grass until the 2nd week of November and then brought home and have been on the same feed as the others. The Heifers calving date and sex of the calf is listed to the best of our knowledge. The Heifers were pregnancy checked for a 2nd time the last week of December. We would ask that these heifers get picked up as soon as possible after the sale. **All Heifers are bred to either one of our two heifer bulls, CCR Anthem 3355J (ASA# 4028639) or Bridle Bit All Terrain L3110 (ASA# 4211473). Both bulls were turned out with the heifers. DNA can determine the sire of the calf if necessary.**

121

LRS MS POUNDER 387L

BD: 3/15/23 • ASA#: 4199745 • Tattoo: 387L
5/8 SM 3/8 AN • Homozygous Polled • Homozygous Black

Act. BW 78
BW Ratio 93
Adj WW 433
WW Ratio 86
Adj YW 761
YW Ratio 94
WDA
ADG
Adj SC

CCR PAY DIRT 2340C

sire: **CCR POUNDER 2045F**

CCR MS 707 COWBOY 4123B

BDV PROGRESSIVE 83D

dam: **LRS MS PREMIUM 8011F**

LRS MS FULL POWER 521C

Rank	CE	BW	WW	YW	ADG	MCE	Milk	STAY	DOC	CW	Marb	BF	REA	API	TI
	16.0	-2.6	76.4	122.8	0.29	8.8	28.8	21.3	17.3	18.3	0.41	-0.007	0.10	157.3	85.2
15	15	50	40	35	25	15	2	10	90	45	90	99	15	35	

122

LRS MS POUNDER 371L

BD: 3/13/23 • ASA#: 4199730 • Tattoo: 371L
3/4 SM 1/4 AN • Homozygous Polled • Homozygous Black

Act. BW 80
BW Ratio 94
Adj WW 593
WW Ratio 111
Adj YW 902
YW Ratio 108
WDA
ADG
Adj SC

CCR PAY DIRT 2340C

sire: **CCR POUNDER 2045F**

CCR MS 707 COWBOY 4123B

HOOK'S BALTIC 17B

dam: **LRS MS BALTIC 824F**

LRS MS NIGHTRIDE 6009D

Rank	CE	BW	WW	YW	ADG	MCE	Milk	STAY	DOC	CW	Marb	BF	REA	API	TI
	14.6	-0.7	84.8	136.6	0.32	8.8	26.2	20.4	13.8	33.8	0.28	-0.029	0.53	147.4	85.0
30	35	20	20	20	25	35	4	35	50	65	70	80	30	35	

Due March 18th with a heifer calf. Great way to start off with this big bodied soggy made heifer sired by CCR Pounder. Her brother sells as lot 28. Top 15% for API, Top 2% stayability, Top 10 % docility, and top 15% for CE and BW. She is bred to make the next generation of calving ease genetics, and built capable of making growth and power genetics too. Top it off with some outcross genetics on the bottom side of her pedigree. Great opportunity here and a 2 for 1 with the heifer calf she is carrying.

Due April 6th. Another Pounder daughter but this one is probably a tick more powerful. She had a 111 WW Ratio and a 108 YW ratio which supports her ATM stamp as well. Dam is broody Hook's Baltic cow with a great udder who herself is ratiating a WW ratio of 104 on her calves.



Lot 123



Lot 124

123

LRS MS BADLANDS 349L

BD: 3/8/23 • ASA#: 4199708 • Tattoo: 349L
PB SM • Homozygous Polled • Homozygous Black

RBS BOISE B63

sire: LRS BADLANDS 401F

LRS MS TEN X 401B

MCM TOP GRADE 018X

dam: LRS MS TOPGRADE 3015A

LRS MS DAKOTA 558R



Act. BW	74
BW Ratio	-
Adj WW	534
WW Ratio	-
Adj YW	745
YW Ratio	-
WDA	-
ADG	-
Adj SC	-

Rank	CE	BW	WW	YW	ADG	MCE	Milk	STAY	DOC	CW	Marb	BF	REA	API	TI
	10.9	-1.4	72.5	101.2	0.18	8.7	25.5	20.9	15.0	10.6	0.59	-0.099	0.68	167.5	90.4
60	10	75	85	95	15	30	4	15	99	5	15	90	10	20	

Due March 20th with a heifer calf. Great opportunity to get a 3015A daughter and sired by a former high seller through our sale to the Froehlich Ranch, LRS Badlands. The result of a flush mating she ranks in the top 10% for API, and top 4% for Stayability. Outcross PB Simmental pedigree with tons of mating options for her new owner.

124

LRS MS VARSITY 347L

BD: 3/8/23 • ASA#: 4199706 • Tattoo: 347L
5/8 SM 3/8 AN • Homozygous Polled • Homozygous Black

CCR POUNDER 2054F

sire: CCR VARSITY 4112H

CCR MS FRONTIER 4112B

TEHEMA TAHOE 8767

dam: LRS MS TAHOE 1112J

LRS MS NEW FRONT 9111G



Act. BW	78
BW Ratio	102
Adj WW	568
WW Ratio	112
Adj YW	839
YW Ratio	108
WDA	-
ADG	-
Adj SC	-

Rank	CE	BW	WW	YW	ADG	MCE	Milk	STAY	DOC	CW	Marb	BF	REA	API	TI
	18.2	-1.5	87.4	130.4	0.27	9.8	28.2	20.3	17.4	25.8	0.28	-0.010	0.23	152.0	87.0
5	25	15	25	50	15	20	4	10	75	65	90	99	25	30	

Due April 4th. When I said the sort was simple, I meant it - we are even selling one of Grace's heifers. Sired by the calving ease bull CCR Varsity and again an outcross pedigree on the maternal side. She is deep and broody and a little more moderate. She ratioed 112 at weaning and 108 at a year and did that in a calving ease package ranking in the top 10% for calving ease 25% for BW. She just has the look of a mother cow.

LASSLE RANCH SIMMENTALS



Lot 125

LRS MS POUNDER 372L

125

BD: 3/13/23 • ASA#: 4199731 • Tattoo: 372L
1/2 SM 1/2 AN • Homozygous Polled • Homozygous Black

CCR PAY DIRT 2340C

sire: CCR POUNDER 2045F

CCR MS 707 COWBOY 4123B

PA FULL POWER 1208

dam: LRS MS FULL POWER 655D

LRS MS CLUB KING 129Y



Act. BW	88
BW Ratio	104
Adj WW	545
WW Ratio	102
Adj YW	910
YW Ratio	109
WDA	
ADG	
Adj SC	

Rank	CE	BW	WW	YW	ADG	MCE	Milk	STAY	DOC	CW	Marb	BF	REA	API	TI
90	9.5	1.7	95.3	153.7	0.36	2.4	26.7	13.8	17.2	58.4	0.55	-0.035	0.75	142.5	94.5
	90	80	4	3	10	99	30	60	10	4	25	55	40	35	10

Due April 4th. Out of a productive coming 9 year old cow who is maintaining a 367 day calving interval on her 7 calves. This heifer ratioed 102 at weaning and then ratioed 109 at a year and ranks in the top 5% for both WW and YW epd's.



Lot 126

LRS MS AMERICAN PROUD 342L

126

BD: 3/7/23 • ASA#: 4199702 • Tattoo: 342L
PB SM • Homozygous Polled • Homozygous Black

ASR AMERICAN PATRIOT F843

sire: ASR AMERICAN PROUD H0301

ASR LITTLE DESI D6273

J BAR J NIGHTRIDE 225Z

dam: LRS MS NIGHTRIDE 529C

LRS MS ADJUSTER 376A



Act. BW	76
BW Ratio	89
Adj WW	539
WW Ratio	93
Adj YW	795
YW Ratio	95
WDA	
ADG	
Adj SC	

Rank	CE	BW	WW	YW	ADG	MCE	Milk	STAY	DOC	CW	Marb	BF	REA	API	TI
30	13.2	-3.5	77.2	126.8	0.31	6.6	18.6	19.8	15.5	33.0	0.47	-0.065	1.06	170.5	93.3
	30	2	55	30	15	40	85	10	15	35	15	70	15	5	15

Due April 2nd. Top 25% CE, top 2% BW, Top 10% Stay, top 15% Doc, top 15% marbling and ties it all together to rank in the top 5% for API! Traces back to LRS Adjuster on the dam's side it is easy to see where the longevity comes in. Adjuster is out of the 078X cow, who is also the dam of the 437B cow, who is the dam of the 983G cow. Absolute top of the line cow family that carries the LRS prefix for almost 30 years on maternal side. Great combination with American proud.



Lot 127

LRS MS FIREBALL 3120L

127

BD: 3/28/23 • ASA#: 4199631 • Tattoo: 3120L
PB SM • Homozygous Polled • Homozygous Black

THR HIGH POINT 8533F

sire: LRS FIREBALL 3021H

LRS MS TOPGRADE 3021A

LRS ELEVATE 213B

dam: LRS MS ELEVATE 720E

LRS MS CLASS ACT 5118C



Act. BW	82
BW Ratio	96
Adj WW	543
WW Ratio	102
Adj YW	866
YW Ratio	104
WDA	
ADG	
Adj SC	

Rank	CE	BW	WW	YW	ADG	MCE	Milk	STAY	DOC	CW	Marb	BF	REA	API	TI
35	12.8	0.2	79.2	124.2	0.28	6.0	22.8	18.0	13.2	24.7	0.32	-0.080	0.74	151.1	86.2
	35	30	45	35	30	50	55	25	35	65	25	50	80	25	30

Due March 20th. Granddam is a full sister to the 437B cow and I mentioned this time tested cow family in Lot 126. She had a WW ratio of 102 and then followed it up with a 104 YW ratio. Ranks in top 25 % for API. LRS Fireball was a bull we kept and used out of the 3021A cow who traces back to the old 559R cow for those with a great memory of her accomplishments.

128

LRS MS GPS 336L

BD: 3/6/23 • ASA#: 4199696 • Tattoo: 336L
PB SM • Homozygous Polled • Homozygous Black

KOCH BIG TIMBER 685D

sire: BRIDLE BIT GPS H078

BRIDLE BIT MISS F840

LRS BADLANDS 401F

dam: LRS MS BADLANDS 1176J

LRS MS ELEVATE 6018D



Act. BW	78
BW Ratio	102
Adj WW	513
WW Ratio	101
Adj YW	745
YW Ratio	96
WDA	
ADG	
Adj SC	

Rank	CE	BW	WW	YW	ADG	MCE	Milk	STAY	DOC	CW	Marb	BF	REA	API	TI
	11.9	0.8	95.7	145.0	0.31	7.9	21.0	13.1	7.0	46.8	0.21	-0.079	0.97	138.6	92.0
45	40	5	10	15	20	70	80	95	10	45	50	30	40	15	

Due April 4th. Daughter of the heavily used Bridle Bit GPS H078 and back to the 6018D donor cow on the maternal side. Really sound structured, feminine made heifer that is really attractive. Another heifer that should sire some performance and is backed up by the G+ and ATM stamps.



129

LRS MS FASTBALL 3140L

BD: 4/6/23 • ASA#: 4199653 • Tattoo: 3140L
3/4 SM 1/4 AN • Homozygous Polled • Homozygous Black

LRS BADLANDS 401F

sire: LRS FASTBALL 014J

LRS MS CLASS ACT 437B

CCR PAYDAY 0320C

dam: LRS MS PAYDAY 849F

LRS MS NIGHTRIDE 558C



Act. BW	90
BW Ratio	107
Adj WW	520
WW Ratio	103
Adj YW	813
YW Ratio	100
WDA	
ADG	
Adj SC	

Rank	CE	BW	WW	YW	ADG	MCE	Milk	STAY	DOC	CW	Marb	BF	REA	API	TI
	9.6	2.5	89.4	138.0	0.30	5.0	24.1	16.8	13.0	40.8	0.35	-0.057	0.69	133.4	84.9
85	90	10	15	30	80	50	30	45	30	55	30	50	55	40	

Due March 17th carrying a heifer calf. Power in the pedigree sired by LRS Fastball, a bull we kept out of the 437B cow and her dam traces back to the 559R cow. Ranks in the top 15% for WW and YW and gets the G+ and ATM stamps.



130

LRS MS POUNDER 380L

BD: 3/14/23 • ASA#: 4199738 • Tattoo: 380L
1/2 SM 1/2 AN • Homozygous Polled • Homozygous Black

CCR PAY DIRT 2340C

sire: CCR POUNDER 2045F

CCR MS 707 COWBOY 4123B

SCHIEFELBEIN EFFECTIVE 61

dam: LRS MS EFFECTIVE 7109E

LRS MS DAKOTA 559R



Act. BW	92
BW Ratio	108
Adj WW	561
WW Ratio	105
Adj YW	907
YW Ratio	109
WDA	
ADG	
Adj SC	

Rank	CE	BW	WW	YW	ADG	MCE	Milk	STAY	DOC	CW	Marb	BF	REA	API	TI
	9.0	2.9	103.2	169.8	0.42	4.6	28.0	14.8	14.6	56.6	0.49	-0.051	0.74	142.6	96.8
90	95	1	1	1	85	20	50	25	5	30	30	40	35	10	

Due April 3rd. Granddam is the old 559R cow who ended up with over 200 calves registered through the ASA to date and according to the ASA database lived until she was 19 or 20 years old. Her dam, 7109, is still in our herd and bred to calve again this spring with a good udder and great feet. You want growth, this heifer ranks in the top 1% of the breed for WW and YW, ratioed 105 for WW, 109 for YW which is supported by the G+ and ATM Stamps.



LASSLE RANCH SIMMENTALS



131

LRS MS FIREBALL 3135L

BD: 4/3/23 • ASA#: 4199647 • Tattoo: 3135L
5/8 SM 3/8 AN • Homozygous Polled • Homozygous Black

THR HIGH POINT 8533F

sire: **LRS FIREBALL 3021H**

LRS MS TOPGRADE 3021A

LRS TOP TEN 104A

dam: **LRS MS TOP TEN 810F**

LRS MS INNOVATION 658D



Act. BW	88
BW Ratio	104
Adj WW	564
WW Ratio	106
Adj YW	842
YW Ratio	101
WDA	
ADG	
Adj SC	

Rank	CE	BW	WW	YW	ADG	MCE	Milk	STAY	DOC	CW	Marb	BF	REA	API	TI
50	12.9	2.3	90.0	142.1	0.33	7.4	23.4	15.6	12.3	45.2	0.40	-0.054	0.77	139.4	87.4

Due April 1st. ATM stamped and ranks in the top 15% for WW and YW while ratioing 106 for WW and 101 for YW. Her dam is ratioing 105 for WW and YW on her report card and is also the dam of lot 92 in this year's sale. Part of the 078X cow line as well.



132

LRS MS GPS 303L

BD: 2/24/23 • ASA#: 4199602 • Tattoo: 303L
3/4 SM 1/4 AN • Homozygous Polled • Homozygous Black

KOCH BIG TIMBER 685D

sire: **BRIDLE BIT GPS H078**

BRIDLE BIT MISS F840

MCCONNELL ALTITUDE 3114

dam: **LRS MS ALTITUDE 154J**

LRS MS TOPGRADE 3021A



Act. BW	72
BW Ratio	95
Adj WW	516
WW Ratio	102
Adj YW	829
YW Ratio	107
WDA	
ADG	
Adj SC	

Rank	CE	BW	WW	YW	ADG	MCE	Milk	STAY	DOC	CW	Marb	BF	REA	API	TI
45	13.3	0.4	98.5	160.2	0.39	7.6	21.5	15.3	7.5	43.0	0.30	-0.007	0.56	140.4	91.6

Due April 2nd. Maybe the most moderate framed heifer in the offering but is big middled with a brood cow look to her. Out of a young Altitude daughter, and part of the 559R cow family via the 3021A cow. She ratioed 102 for WW and cranked it up to ratio 107 for YW while ranking in the top 2% for WW and YW.



133

LRS MS FASTBALL 391L

BD: 3/16/23 • ASA#: 4199749 • Tattoo: 391L
 3/4 SM 1/4 AN • Homozygous Polled • Homozygous Black

LRS BADLANDS 401F

sire: LRS FASTBALL 014J

LRS MS CLASS ACT 437B

LRS TOP TEN 104A

dam: LRS MS TOP TEN 609D

LRS MS PIONEER 325A



Act. BW	80
BW Ratio	-
Adj WW	497
WW Ratio	-
Adj YW	761
YW Ratio	-
WDA	
ADG	
Adj SC	

Rank	CE	BW	WW	YW	ADG	MCE	Milk	STAY	DOC	CW	Marb	BF	REA	API	TI
	12.7	0.4	81.4	127.4	0.29	7.2	21.5	16.6	12.9	48.6	0.29	-0.058	0.96	134.7	81.6
50	60	30	30	35	45	75	30	45	15	65	30	15	50	50	50

Due April 6th. Fastball daughter whose dam is still in the herd at 9 years of age and still has a good under and sound feet. She combines that with the fleshing ability of Badlands and the maternal power of the 078X cow. There is a common theme through these bulls and bred heifers, we really focus on the cows that work in this country and they keep surfacing in these pedigrees.



134

LRS MS GPS 388L

BD: 3/16/23 • ASA#: 4199746 • Tattoo: 388L
 PB SM • Homozygous Polled • Homozygous Black

KOCH BIG TIMBER 685D

sire: BRIDLE BIT GPS H078

BRIDLE BIT MISS F840

LRS TIMTRAVELER 37X

dam: LRS MS TIMTRAVELER 328A

LRS MS LIMELIGHT 9015W



Act. BW	94
BW Ratio	111
Adj WW	542
WW Ratio	108
Adj YW	801
YW Ratio	99
WDA	
ADG	
Adj SC	

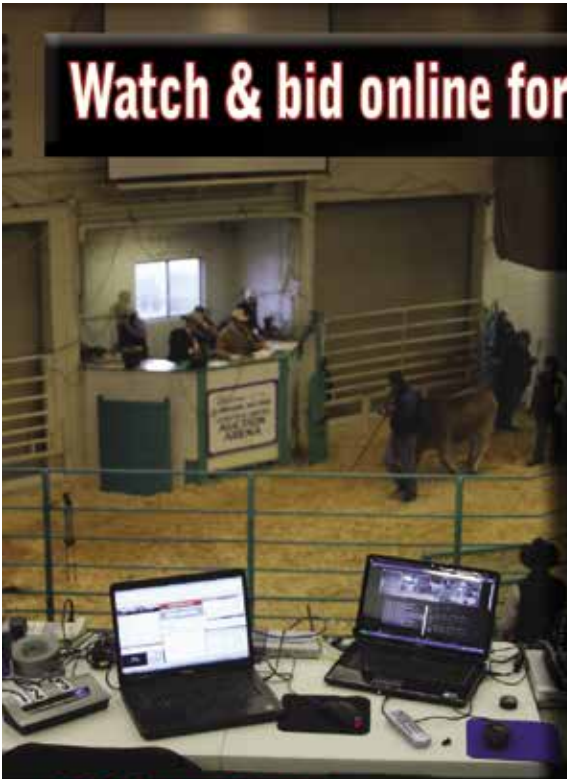
Rank	CE	BW	WW	YW	ADG	MCE	Milk	STAY	DOC	CW	Marb	BF	REA	API	TI
	11.2	3.1	100.7	150.6	0.31	8.0	21.1	17.7	10.1	54.9	0.16	-0.056	0.74	140.6	90.0
55	90	2	4	15	20	70	25	70	2	55	85	80	40	20	20

Due April 7th. Dam is the 328A cow who is also the dam of lot 18. Maybe the largest framed heifer in the group, but her dam is known for siring true performance over the years ratiating 109 for WW and 105 for YW. She is backed by the G+ and ATM stamps and herself weaned off ratiating 109, while ranking in the top 5% for both WW and YW.



LASSLE RANCH SIMMENTALS

Watch & bid online for **FREE** at



Can't make the sale? Bid from home with DV Auction's "real-time" internet bidding service!

Buying online is as easy as 1, 2, 3...

1. Create an account at www.dvauction.com under the "register" tab
2. Apply for bidding approval by clicking on the "details" tab at least 24 hours prior to the auction-a DV representative will notify you once you have been approved
3. Tune in for the sale and make your purchases!



After the sale, contact the sale manager or owner to arrange transportation and payment. **High speed internet** is required for successful bidding-be sure to check the lag-time monitor in the top left corner to ensure real-time broadcasts.

Proxy Bidding-if you can't make time to watch the sale, register a proxy bid and let our system represent your bid while you're away. Look for the "proxy bid" tab on the auction listing, and fill in your maximum bids. We'll handle the rest!

Having troubles? During the auction, you can type a message to the operator at any time for assistance. Our full-time support team can also always be reached at (402) 474-5557.



Full Service Livestock Marketing

Video - Photography - The Stock Exchange - Ring Service - Banner Ads - Onsite Viewing Service

HOW DOES A GENOMIC TEST BENEFIT OUR CUSTOMERS?

We have been doing Genomic testing here at LRS for years and taking advantage of all the programs available through the American Simmental Association. Our entire cowherd and every calf born here gets a genomic test – even the culls. **Every bull that sells has genomically enhanced EPD's.** This does not replace phenotypic data, it enhances it. We still collect all the phenotypic traits that we can: Birthweight, Calving ease, weaning weights, yearling weights, Mature Cow weights every fall, Body condition scores, individual carcass data. The phenotypic data is irreplaceable and essential to work hand in hand with the DNA samples to enhance their EPD's.

How does it benefit you: It creates a more accurate prediction with a higher accuracy EPD because it combines not only the animals phenotypic data (BW, CE, WW, YW etc..) and pedigree, but also takes into account what gene markers the animal has that science has proven to affect certain traits. It also provides parentage verification so you can be assured the parentage is right. It is like getting an entire calf crop worth of information for bulls, before they even breed a cow.

TRAIT	PROGENY	TRAIT	PROGENY
Calving ease	25+	Stayability	15
Maternal calving ease	4	Carcass weight	6
Birth weight	22	Marbling	10
Weaning weight	25+	Ribeye area	8
Yearling weight	25+	Back fat	11
		Docility	25+

IMPROVED BUYING CONFIDENCE WITH GREATER GENOMIC ASSURANCE

The 3 Accreditation Logos below are designed to simplify bull selection and improve buyer confidence by more accurately describing the genetics offered and by reducing risk. What this means to you as a customer is a much greater assurance that you are getting both what you want and need from the genetics you purchase. What it means to your seedstock provider is access to RightMate technology that simply sets them apart from the rest of the industry.

ACCREDITED CALVING EASE – Simply find bulls with the ACE logo for third party Accredited, secure Calving Ease bulls. Though we have had tools in the past to assist in choosing heifer bulls, we've never had one nearly this effective. The reduced risk that comes with this genomic certification will simply make your decisions easier and your heifer calving season more successful. Purchase special purpose ACE bulls with confidence. They will deliver consistent and predictable calving ease.



ACCREDITED TERMINAL MATE – Just like an ATM machine makes it simpler to access your cash, the ATM Logo highlights bulls accredited to generate extra cash income as soon as your next calf crop! These bulls are meant specifically to use only on mature cows and for the purpose of adding performance, pay weight and end product value to market.



ACCREDITED GENOMIC PLUS – For the majority of producers who simply need consistent and balanced genetic improvement, without genomic setbacks, G+ Accredited bulls should be on your list for premium purchase. These sires will absolutely move you forward for both cost reduction and income producing traits and substantially reduce risk when compared to all other evaluation programs. It's simple, the right genes are in these bulls to help secure a profitable future and the they have great EPDs to match!



Terms & Conditions

TERMS AND CONDITIONS

1. Terms of the sale are cash or check at the time of the sale unless other arrangements are made prior to sale.
2. Each animal becomes the property of and therefore is also the risk of the purchaser as soon as it is sold; except it shall be the obligation of the seller to see that animals are fed and cared for free of charge to purchaser, until loaded for shipment or until the expiration of twenty-four hours after the sale, whichever occurs first. We guarantee the cattle to be healthy sale day.
3. We will abide by the rules set forth by the American Simmental Association.
4. As we have no control over the acts of God, we cannot guarantee these cattle against death loss, injury or sickness. We guarantee cattle to be healthy sale day.
5. Every animal selling is guaranteed be free of all known genetic defects at the time of the sale either by know genetic defect free pedigree or by negative DNA test. Lassle Ranch Simmentals is not liable for any genetic defects not recognized by the ASA or such defect that has no available commercial DNA test at the time of the sale.

We will keep the website updated with any information we get between the time the catalog goes to print and sale day.
www.lassleranchsimmentals.com

Cattle are available for your inspection any time. Feel free to come ahead of sale day.

BUYER VOLUME DISCOUNTS

We will be offering Discounts for volume bull buyers:

- 3 head - 3%
- 4 head - 4%
- 5 or more head 5%

ANNOUNCEMENTS

All announcements and changes made by the auctioneer will take precedence over printed material. Anyone attending the sale attends at their own risk. Lassle Simmentals or any of the sale force will not be responsible for any personal injury or loss for attending the sale.

SIGHT UNSEEN PURCHASES

We guarantee all sight unseen purchases. Call ahead of time and we will go over the offering. You can leave a bid with us or a representative. You will be treated as if you are here. A video of sale cattle is available on www.lassleranchsimmentals.com

DELIVERY

We will offer free delivery within 400 mile radius of Glendive, MT. Other delivery arrangements will be made as economically as possible, based upon the volume of the purchase.

AFTER SALE CARE

\$100.00 off cattle that are taken sale day. Free feed on any bull until the first of April. On the bulls that we winter, we will have them fertility tested and fertility certificates issued. Insurance will be available sale day - we encourage you to insure bulls that we winter.

SEMEN INTEREST

Lassle Ranch Simmentals is selling all bulls in their entirety. Full possession, and 100% semen interest in all bulls will be sold. Lassle Ranch Simmentals does reserve the right to in herd use semen on any bull in the sale, at the cost of collection. Should the need arise for us to collect semen on a bull in your possession, it would be done at our expense and your convenience

FULL PURCHASE VALUE EXTENDED WARRANTY ON SALE BULLS

Every bull selling carries a 100% guarantee extended warranty for one breeding season provided the bull is managed properly and acceptable nutritional physical health. In the event a customer has any problem in with a bull (health, injury or death) prior to or during the bulls first breeding season the customer should immediately contact Lassle Ranch Simmentals to report a claim. A veterinarian's statement of the problem will be required and Lassle Ranch reserves the right to have the bull returned if deemed necessary. A replacement bull of mutually agreed upon quality will be provided if Lassle Ranch has one available. In the event a satisfactory replacement is not available, the customer will be given a full credit (minus salvage value) to be used in a future Lassle Ranch Sale. LRS will not be held responsible under any circumstances for any settlement amount exceeding the purchase price of bull. No one can guarantee that every animal will perform perfectly, but at Lassle Ranch Simmentals we can guarantee that we will make things right if they do not.

TESTICLE MEASUREMENTS

The scrotal circumference of each bull was tape-measured the week before Christmas while clipping the bulls. The scrotal measurement were adjusted to yearling and sometimes will vary one way or another as actual yearlings. We guarantee our bulls 100% for fertility - unless damage is induced at your ranch - and then it's out of our control.

RECOMMENDATIONS FOR SCROTAL CIRCUMFERENCE

MONTHS OF AGE	12-14	15-20	21-30	30+
SCROTAL CM	35	37	39	40 - EXCELLENT
	30-35	31-37	32-39	33-40 - GOOD
	30	31	32	33 - POOR

SUGGESTED GUIDELINES FOR USING YEARLING BULLS

We are firm believers in the use of yearling bulls and feel it is one of the best years of their lives. It is a time when they are easy to manage and their only concern is breeding cows. We have found that yearling bulls that are managed carefully during the second year of their lives, not only do well, but they will perform better over time. Below are some suggested guidelines for the care of yearling bulls.

- Upon deliver to your ranch, keep yearling bulls separate from older bulls and feed them a maintenance ration of 5-8 lbs per head of grain and free choice hay. Reduce the amount of grain fed gradually, so that bulls are on straight hay or grass 2-4 weeks prior to the breeding season.
- Where possible try to limit the bulls and put them in separate pastures with plenty of good quality grass. It is best to achieve the growth and strength to compete with older bulls for feed and space.
- You will see the benefit of a little added cost and care of feeding a yearling bull by probably two or three more years of service from a well managed and healthy bull.

UNDERSTANDING LOT NUMBER COLOR CODES

Green Ear Tags - Purebred Simmental
Blue Ear Tags - 3/4 Simmental
Yellow Ear Tags - 5/8 or 1/2 Simmental
White Ear Tags - 3/8 Simmental

Catalog designed by



www.generation6.co

LRS

LASSLE RANCH SIMMENTALS



LASSLE RANCH SIMMENTALS
42 ROAD 245
GLEN DIVE, MT 59330



Lot 1



Lot 8



Lot 3



Lot 4

**JOIN US FOR OUR 32ND ANNUAL BULL SALE!
FEBRUARY 13, 2025 AT THE RANCH**

**Selling 120 Simmental & SimAngus Bulls
14 Bred Heifers from the Heart of the Herd**

**FREE DELIVERY • BULLS AVAILABLE TO VIEW ANYTIME
SIGHT UNSEEN & FIRST YEAR BREEDING SEASON GUARANTEES**



PRINTED BY
**LIVESTOCK
DIRECT**
www.livestockdirect.com