

# LRS

LASSLE RANCH SIMMENTALS



**31<sup>ST</sup> ANNUAL BULL SALE**

**FEBRUARY 8, 2024 // 1:00 PM MST // AT THE RANCH // GLENDIVE, MT**

# Welcome!

Welcome to our 31st annual bull sale. We are humbled and blessed by the support that our past and current customers have shown us. Your trust in our genetics to keep your operations on the right track is what keeps us focused year after year to ensure we are providing a product that will continue to add value to your operations into the future.

When we say bulls backed by real world cows, it highlights that focus. We expect these cows to work for us just like you do with a high emphasis on udders, feet, disposition, structure, fleshing ability, mothering instinct, and fertility. Whether you want to call them the convenience traits, or you use another name, they can have the biggest impact on cow herd profitability. Rest assured they are valued in our operation, and we take these "cowboy" traits and blend them with all the science available to offer these bulls for your appraisal.

2023 proved to be a year with many challenges for us and many in our region. Coming off of one of the worst winters in years that pushed into calving season, and a summer that was filled with grasshoppers and flies at a

level that many have never experienced, it challenged the cowherd and definitely affected weaning weights. We look forward to 2024, and the markets this past year have been a bright spot. It is a great time to be in the cattle business, and we are hopeful this upswing in the markets will last for a couple of years.

We hope you can be with us on February 8th but know that sometimes that is not possible. We will again be utilizing DVAuction.com as our platform for online bidding. All the bull videos will be posted there for viewing ahead of the sale.

In closing, thank you again for your interest. The ranch is always open to view the bulls or the cowherd behind them. We do offer a \$250 sale credit for viewing the bulls ahead of the sale. If you have any questions, please do not hesitate to give us a call. We look forward to seeing you on the 8th!

Clay and Marianne Lassle  
Ryan, Sarah, Grace, and Harper Thorson



# LRS

## LASSLE RANCH SIMMENTALS



**FEBRUARY 8, 2024 // 1:00 PM MST AT THE RANCH // GLENDIVE, MT**

### CONTACT INFORMATION

Clay & Marianne Lassle  
42 Road 245 | Glendive, MT 59330  
Home 406-486-5584 | lrsbeef@midrivers.com  
Sarah & Ryan Thorson 406-694-3722

### SALE SCHEDULE & LOCATION

Thursday, February 8, 2024 | 1:00 PM MST  
At the Ranch - Glendive, MT  
Sale barn address: 42 Road 245 Glendive, MT 59330  
Lunch Served ..... 11:30 a.m. MST  
Sale Time.....1:00 p.m. MST

### SALE DAY PHONE NUMBERS

Clay Lassle, cell .....406-939-1348  
Ryan Thorson, cell.....406-694-3722  
Sarah Thorson, cell.....406-694-3760  
Lassle Sale Barn.....406-486-5585

### SALE REPRESENTATIVES

Jeff Thomas, *The Prairie Star/Farm and Ranch Guide* .....406-581-8859  
Rocky Forseth, *Allied Genetic Resources* .....406-590-7984  
John Goggins, *Western Ag Reporter* .....406-698-4159  
Devin Murnin, *Western Livestock Journal* .....406-696-1502  
Andy Roberts, *ASA SimSpecialist*.....406-852-4387

### AUCTIONEER

Roger Jacobs, Billings, MT .....406-698-7686

### AREA MOTELS

LaQuinta Inn & Suites .....406-377-7300  
Astoria Inn of Glendive .....406-377-6000  
Yellowstone River Inn.....406-377-4433  
Holiday Inn Express .....406-377-3300

### EPD DATA

EPDs are current as of January 9, 2024. View the current EPDs online at [herdbook.org](http://herdbook.org)

### SALE DIRECTIONS

**Going west on I-94 out of Glendive – 18 miles**

- Take Exit 198 – Crackerbox Exit – Turn left off interstate, go 1/4 mile
- Take a right onto CR 261 go 2 1/2 miles there will be 5 mailboxes and a Lassle sign
- Turn left onto Road 245 go 1/4 mile you will see another Lassle sign as you enter the yard.

**Going east on I-94 from Miles City**

- Take exit 192 – Bad Route Rest Area – turn right off interstate go 1/2 - 3/4 mile
- Turn left onto CR 261
- Go approximately 3 miles to group of mailboxes with Lassle sign
- Turn right onto road 245 go 1/4 mile you will see another Lassle sign as you enter the yard

### ABSENTEE BIDDING OPTIONS

**SIGHT UNSEEN PURCHASE GUARANTEE!**

#### Be on the Phone

If you would like to be on the phone with one someone during the sale, call one of the sale day phone numbers and we will make arrangements.

#### Leave us your Order

Call and visit with Ryan, Clay or one of our Sale Representatives ahead of the sale and leave your order with them. Your order will be handled with respect and confidentiality.

### ONLINE BIDDING WITH DVAUCTION

Sale Broadcasted Live on DVAuction  
[www.dvauction.com](http://www.dvauction.com) // 402-316-5460

\*Find more details on how to view & bid with DVAuction on page



To view bull videos scan QR code or visit [dvauction.com](http://dvauction.com)



# LASSLE RANCH SIMMENTALS



Lot 1

Full Brothers  
Lots 1-3



Lot 3

**Lots 1-3.** Flush Brothers to lots 27 and 38. What a way to start the sale off with with this group of flush brothers out of the famed 983G cow and the ever popular Angus bull DB Iconic. Study these bulls and they reek of mass and substance with plenty of eye appeal. Combined with great performance and a genetic prediction to sire calves that will perform on the cow and beyond and should leave a set of daughters behind that should be the right kind.



Lot 2

## LRS 8021L

BD: 3/7/23 • ASA#: 4199803 • Tattoo: 8021L  
1/2 SM 1/2 AN • Homo Polled • Homo Black



MUSGRAVE 316 STUNNER

sire: **DB ICONIC G95**

DB MS DISCOVERY D13  
HOOK'S EAGLE 6E

dam: **LRS MS EAGLE 983G**

LRS MS CLASS ACT 437B

Act. BW	90
BW Ratio	ET
Adj WW	667
WW Ratio	ET
Adj YW	1249
YW Ratio	ET
WDA	3.45
ADG	3.68
Adj SC	38.7



Rank EPDs	CE	BW	WW	YW	ADG	MCE	Milk	STAY	DOC	CW	Marb	BF	REA	API	TI
	11.3	-1.3	93.3	154.1	0.38	4.4	26.8	15.6	17.6	72.1	0.84	-0.004	0.97	170.6	104.8
	70	25	5	3	3	90	30	40	5	1	4	90	15	5	1

## LRS 711L

BD: 3/9/23 • ASA#: 4199784 • Tattoo: 711L  
1/2 SM 1/2 AN • Homo Polled • Homo Black



MUSGRAVE 316 STUNNER

sire: **DB ICONIC G95**

DB MS DISCOVERY D13  
HOOK'S EAGLE 6E

dam: **LRS MS EAGLE 983G**

LRS MS CLASS ACT 437B

Act. BW	92
BW Ratio	ET
Adj WW	724
WW Ratio	ET
Adj YW	1395
YW Ratio	ET
WDA	3.81
ADG	4.24
Adj SC	40.3



Rank EPDs	CE	BW	WW	YW	ADG	MCE	Milk	STAY	DOC	CW	Marb	BF	REA	API	TI
	9.8	0.5	108.1	177.4	0.43	3.5	26.8	14.5	19.2	84.5	0.86	-0.007	0.84	170.3	111.7
	85	55	1	1	1	95	30	50	2	1	4	90	30	5	1

## LRS 3019L

BD: 3/13/23 • ASA#: 4199599 • Tattoo: 3019L  
1/2 SM 1/2 AN • Homo Polled • Homo Black



MUSGRAVE 316 STUNNER

sire: **DB ICONIC G95**

DB MS DISCOVERY D13  
HOOK'S EAGLE 6E

dam: **LRS MS EAGLE 983G**

LRS MS CLASS ACT 437B

Act. BW	84
BW Ratio	ET
Adj WW	736
WW Ratio	ET
Adj YW	1310
YW Ratio	ET
WDA	3.68
ADG	3.63
Adj SC	40.0



Rank EPDs	CE	BW	WW	YW	ADG	MCE	Milk	STAY	DOC	CW	Marb	BF	REA	API	TI
	12.1	-1.0	97.8	164.7	0.42	5.0	26.8	14.9	18.0	52.1	0.79	0.000	0.73	169.5	106.3
	60	30	2	1	1	80	30	45	4	10	5	95	45	5	1

# Full Brothers Lots 4-7



Lot 4



Lot 7



Lot 5

**Lots 4-7.** Flush Brothers to Lot 22. No surprise these 983G sons are at the front of the catalog. These are sired by a new bull we used CCR Pounder and you will not be disappointed. Excellent genetic profiles, Outcross pedigree on the sire side for our longtime customers and a set of bulls that do check all the boxes to keep you in the beef business for years to come.

4

## LRS 787L

BD: 3/5/23 • ASA#: 4199799 • Tattoo: 787L  
3/4 SM 1/4 AN • Homo Polled • Homo Black

CCR PAY DIRT 2340C

*sire:* **CCR POUNDER 2045F**

CCR MS 707 COWBOY 4123B

HOOK'S EAGLE 6E

*dam:* **LRS MS EAGLE 983G**

LRS MS CLASS ACT 437B

Act. BW	78
BW Ratio	ET
Adj WW	626
WW Ratio	ET
Adj YW	1118
YW Ratio	ET
WDA	3.11
ADG	3.11
Adj SC	37.6

Rank	CE	BW	WW	YW	ADG	MCE	Milk	STAY	DOC	CW	Marb	BF	REA	API	TI
Rank EPDs	12.2	-3.3	85.7	129.2	0.27	5.9	31.3	20.4	19.0	43.4	0.42	-0.037	0.49	156.6	92.1
	55	10	20	25	45	70	10	4	3	25	40	60	85	15	15

5

## LRS 785L

BD: 3/7/23 • ASA#: 4199797 • Tattoo: 785L  
3/4 SM 1/4 AN • Homo Polled • Homo Black

CCR PAY DIRT 2340C

*sire:* **CCR POUNDER 2045F**

CCR MS 707 COWBOY 4123B

HOOK'S EAGLE 6E

*dam:* **LRS MS EAGLE 983G**

LRS MS CLASS ACT 437B

Act. BW	90
BW Ratio	ET
Adj WW	721
WW Ratio	ET
Adj YW	1252
YW Ratio	ET
WDA	3.50
ADG	3.35
Adj SC	38.7

Rank	CE	BW	WW	YW	ADG	MCE	Milk	STAY	DOC	CW	Marb	BF	REA	API	TI
Rank EPDs	11.0	3.1	114.0	181.7	0.42	5.2	31.3	17.5	18.1	80.7	0.39	-0.038	1.18	149.5	101.5
	75	95	1	1	1	80	10	20	4	1	45	60	3	25	2

6

## LRS 6022L

BD: 3/9/23 • ASA#: 4199774 • Tattoo: 6022L  
3/4 SM 1/4 AN • Homo Polled • Homo Black

CCR PAY DIRT 2340C

*sire:* **CCR POUNDER 2045F**

CCR MS 707 COWBOY 4123B

HOOK'S EAGLE 6E

*dam:* **LRS MS EAGLE 983G**

LRS MS CLASS ACT 437B

Act. BW	94
BW Ratio	ET
Adj WW	631
WW Ratio	ET
Adj YW	1233
YW Ratio	ET
WDA	3.34
ADG	3.79
Adj SC	35.8

Rank	CE	BW	WW	YW	ADG	MCE	Milk	STAY	DOC	CW	Marb	BF	REA	API	TI
Rank EPDs	9.6	3.3	108.6	179.4	0.44	4.1	31.3	19.7	18.5	57.7	0.42	-0.037	0.93	152.5	99.0
	85	95	1	1	1	90	10	10	3	4	40	60	20	20	3

7

## LRS 637L

BD: 3/14/23 • ASA#: 4199781 • Tattoo: 637L  
3/4 SM 1/4 AN • Homo Polled • Homo Black

CCR PAY DIRT 2340C

*sire:* **CCR POUNDER 2045F**

CCR MS 707 COWBOY 4123B

HOOK'S EAGLE 6E

*dam:* **LRS MS EAGLE 983G**

LRS MS CLASS ACT 437B

Act. BW	90
BW Ratio	ET
Adj WW	685
WW Ratio	ET
Adj YW	1216
YW Ratio	ET
WDA	3.40
ADG	3.35
Adj SC	37.6

Rank	CE	BW	WW	YW	ADG	MCE	Milk	STAY	DOC	CW	Marb	BF	REA	API	TI
Rank EPDs	8.0	1.2	103.0	161.8	0.37	3.2	31.3	17.0	18.4	61.8	0.46	-0.049	0.94	147.0	98.3
	95	70	1	1	4	95	10	25	4	3	35	45	15	30	4

# LASSLE RANCH SIMMENTALS



## LRS Ms Eagle 983G

Dam of Lots 1-7, 22, 27, 35, and 38. Dam of LRS Rarity owned by Gibbs Farms and Baxley Farms, Dam of LRS Dutton owned by Trauernicht Simmentals, Select Sires, and All Beef. Dam of LRS Cornerstone owned by Double T Simmentals. Dam of LRS Ranger owned by Nelson Livestock Company.



## LRS 101L

8

BD: 1/19/23 • ASA#: 4199573 • Tattoo: 101L  
5/8 SM 3/8 AN • Homo Polled • Homo Black

CCR POUNDER 2045F

sire: CCR VARSITY 4112H

CCR MS FRONTIER 4112B

TEHAMA TAHOE B767

dam: LRS MS PEPPER 101J

LRS MS PARADISE 910G



Act. BW	78
BW Ratio	98
Adj WW	592
WW Ratio	102
Adj YW	1205
YW Ratio	102
WDA	2.94
ADG	3.88
Adj SC	37.1

Rank	CE	BW	WW	YW	ADG	MCE	Milk	STAY	DOC	CW	Marb	BF	REA	API	TI
	16.4	-2.3	86.3	137.0	0.32	9.0	30.3	15.6	18.7	38.9	0.47	0.000	0.51	154.5	93.1
15	15	15	15	20	20	10	40	3	40	35	95	80	20	10	

Grace's bull calf out of one of her first calf heifers and he will be easy to spot in the pens. Sired by Varsity, a Pounder son we used on heifers, an outstanding bull who does everything right.

## LRS 760L

9

BD: 3/14/23 • ASA#: 4199791 • Tattoo: 760L  
1/2 SM 1/2 AN • Homo Polled • Homo Black

MUSGRAVE 316 STUNNER

sire: DB ICONIC G95

DB MS DISCOVERY D13

LRS A PLUS 219A

dam: LRS MS A PLUS 760E

LRS MS SUREFIRE 419B



Act. BW	84
BW Ratio	95
Adj WW	676
WW Ratio	108
Adj YW	1182
YW Ratio	102
WDA	3.36
ADG	3.21
Adj SC	38.6

Rank	CE	BW	WW	YW	ADG	MCE	Milk	STAY	DOC	CW	Marb	BF	REA	API	TI
	11.7	0.1	93.4	150.1	0.35	5.2	25.3	11.7	13.3	58.7	0.55	0.000	0.61	143.5	95.2
65	45	5	4	10	80	40	80	40	4	25	95	65	35	10	

Growth and Performance in this rascal who came in off the cow rationing 108. The DB Iconics all have this same great look and should leave a great set of females behind.

**Lots 10-12.** Flush brothers to lot 48. Great group of flush brothers here out of the 0142H cow, a daughter of the old 303A cow who left a huge impact on our program through both her sons LRS Top Shelf and LRS Iconic as well as these daughters. This flush worked and we appreciate how sound and correct these bulls are. Enough performance to keep you in the game at weaning time with the pedigree to keep every daughter and stay in the cow business too.

*Lot 10*



# Full Brothers Lots 10-12

## LRS 778L

10

BD: 3/11/23 • ASA#: 4199796 • Tattoo: 778L  
1/2 SM 1/2 AN • Homo Polled • Homo Black

MUSGRAVE 316 STUNNER

sire: **DB ICONIC G95**

DB MS DISCOVERY D13  
NLC GEN TEN 82E

dam: **LRS MS CLEO 0142H**

LRS MS TOPGRADE 303A

Act. BW	90
BW Ratio	ET
Adj WW	687
WW Ratio	ET
Adj YW	1286
YW Ratio	ET
WDA	3.55
ADG	3.79
Adj SC	36.4



Rank	CE	BW	WW	YW	ADG	MCE	Milk	STAY	DOC	CW	Marb	BF	REA	API	TI
Rank EPDs	11.7	2.3	95.7	150.8	0.34	4.6	25.0	12.5	14.9	53.6	0.71	0.006	0.44	150.1	97.4
	65	85	4	4	10	85	45	70	20	10	10	95	90	25	5

## LRS 454L

11

BD: 3/9/23 • ASA#: 4199761 • Tattoo: 454L  
1/2 SM 1/2 AN • Homo Polled • Homo Black

MUSGRAVE 316 STUNNER

sire: **DB ICONIC G95**

DB MS DISCOVERY D13  
NLC GEN TEN 82E

dam: **LRS MS CLEO 0142H**

LRS MS TOPGRADE 303A

Act. BW	78
BW Ratio	ET
Adj WW	586
WW Ratio	ET
Adj YW	1212
YW Ratio	ET
WDA	3.25
ADG	3.96
Adj SC	32.3



Rank	CE	BW	WW	YW	ADG	MCE	Milk	STAY	DOC	CW	Marb	BF	REA	API	TI
Rank EPDs	14.0	-1.7	85.1	146.7	0.38	6.2	25.0	12.1	16.6	52.6	0.74	0.035	0.43	158.9	97.4
	35	20	20	10	3	60	45	75	10	10	10	99	90	15	5

## LRS 100L

12

BD: 3/12/23 • ASA#: 4199952 • Tattoo: 100L  
1/2 SM 1/2 AN • Homo Polled • Homo Black

MUSGRAVE 316 STUNNER

sire: **DB ICONIC G95**

DB MS DISCOVERY D13  
NLC GEN TEN 82E

dam: **LRS MS CLEO 0142H**

LRS MS TOPGRADE 303A

Act. BW	90
BW Ratio	ET
Adj WW	639
WW Ratio	ET
Adj YW	1221
YW Ratio	ET
WDA	3.37
ADG	3.68
Adj SC	36.0



Rank	CE	BW	WW	YW	ADG	MCE	Milk	STAY	DOC	CW	Marb	BF	REA	API	TI
Rank EPDs	11.7	1.8	96.3	151.2	0.34	4.8	25.0	14.0	18.0	69.8	0.79	0.021	0.44	158.2	100.1
	65	80	3	4	10	85	45	55	4	1	5	99	90	15	3

# LASSLE RANCH SIMMENTALS

## LRS 884L

13

BD: 3/13/23 • ASA#: 4199816 • Tattoo: 884L  
1/2 SM 1/2 AN • Homo Polled • Homo Black

MUSGRAVE 316 STUNNER

sire: **LRS CROSSFIT 4306J**

LRS MS CLASS ACT 437B

CONNELY CAPITALIST 028

dam: **LRS MS CAPITALIST 884F**

LRS MS TURNINGPOINT 576C



Act. BW	98
BW Ratio	112
Adj WW	706
WW Ratio	113
Adj YW	1354
YW Ratio	117
WDA	3.73
ADG	4.08
Adj SC	37.0

Rank	CE	BW	WW	YW	ADG	MCE	Milk	STAY	DOC	CW	Marb	BF	REA	API	TI
EPDs	7.7	3.1	95.9	161.3	0.41	-1.0	28.3	21.9	10.2	56.9	0.31	-0.018	1.00	144.1	88.2
	95	95	3	2	1	99	20	2	80	5	60	85	10	30	25

First Crossfit bull to sell, a top seller a couple years ago to Cow Camp Ranch. There is a bunch in the sale and as a sire group are very constant. His dam is an absolute tank with a great udder who we have flushed in the past.

## LRS 712L

14

BD: 3/6/23 • ASA#: 4199785 • Tattoo: 712L  
3/4 SM 1/4 AN • Homo Polled • Homo Black

KOCH BIG TIMBER 685D

sire: **BRIDLE BIT GPS H078**

BRIDLE BIT MISS F840

CONNELY CAPITALIST 028

dam: **LRS MS CAPITALIST 712E**

LRS MS ADJUSTER 352A



Act. BW	86
BW Ratio	98
Adj WW	703
WW Ratio	115
Adj YW	1162
YW Ratio	105
WDA	3.36
ADG	2.89
Adj SC	37.6

Rank	CE	BW	WW	YW	ADG	MCE	Milk	STAY	DOC	CW	Marb	BF	REA	API	TI
EPDs	14.5	0.6	97.3	146.8	0.31	7.5	22.0	18.8	9.4	54.5	0.16	-0.062	0.84	140.6	88.0
	30	55	3	10	25	40	70	10	85	10	85	20	30	35	25

Ratioed 115 at weaning time and 105 for 365 day weight. This dude will easily catch your eye in the pen with his performance and sound structure.

## LRS 351L

15

BD: 3/9/23 • ASA#: 4199710 • Tattoo: 351L  
PB SM • Homo Polled • Homo Black

ASR AMERICAN PATRIOT F843

sire: **ASR AMERICAN PROUD H0301**

ASR LITTLE DESI D6273

LRS ADJUSTER 793Y

dam: **LRS MS ADJUSTER 351A**

LRS MS OLIE 078X



Act. BW	90
BW Ratio	104
Adj WW	700
WW Ratio	113
Adj YW	1235
YW Ratio	110
WDA	3.39
ADG	3.35
Adj SC	36.8

Rank	CE	BW	WW	YW	ADG	MCE	Milk	STAY	DOC	CW	Marb	BF	REA	API	TI
EPDs	8.8	2.1	80.9	131.0	0.31	3.8	27.3	19.5	16.4	40.8	0.38	-0.090	1.29	151.9	87.7
	85	70	35	20	15	85	20	10	10	15	20	30	2	20	25

Check out the performance figures on this bull out of a 10 year old cow. American Proud sons topped the sale last year. Time tested proven genetics.

## LRS CBL 16L

16

BD: 3/10/23 • ASA#: 4256335 • Tattoo: 16L  
1/2 SM 1/2 AN • Homo Polled • Homo Black

CCR PAY DIRT 2340C

sire: **CCR POUNDER 2045F**

CCR MS 707 COWBOY 4123B

LRS ELEVATE 213B

dam: **CBL MS ELEVATE G89**

CBA MS ARSENAL E578



Act. BW	80
BW Ratio	103
Adj WW	646
WW Ratio	105
Adj YW	1299
YW Ratio	111
WDA	3.47
ADG	4.11
Adj SC	38.4

Rank	CE	BW	WW	YW	ADG	MCE	Milk	STAY	DOC	CW	Marb	BF	REA	API	TI
EPDs	10.4	1.1	96.0	157.8	0.39	5.8	34.2	13.8	15.4	60.6	0.42	-0.033	1.01	140.6	94.5
	80	65	3	2	70	2	60	20	3	40	60	10	10	35	10

This bull has a little more white than some might prefer, but that would be his only fault. Excellent Pounder son with tons of performance and style who is flat getting it done.



Lot 13



Lot 14



Lot 15



Lot 16



17

# LRS 340L

BD: 3/15/23 • ASA#: 4199700 • Tattoo: 340L  
PB SM • Hetero Polled • Homo Black

KOCH BIG TIMBER 685D

sire: BRIDLE BIT GPS H078

BRIDLE BIT MISS F840

LRS CROSSROADS 875Y

dam: LRS MS CROSSROADS 340R

LRS MS GRANDMASTER 072X



Act. BW	98
BW Ratio	112
Adj WW	659
WW Ratio	106
Adj YW	1219
YW Ratio	109
WDA	3.36
ADG	3.52
Adj SC	37.6

Rank EPDs	CE	BW	WW	YW	ADG	MCE	Milk	STAY	DOC	CW	Marb	BF	REA	API	TI
	8.1	2.1	97.9	154.6	0.35	5.0	20.2	17.4	6.8	57.7	0.41	-0.034	0.75	152.5	95.8
	90	70	3	2	4	65	75	30	95	2	15	99	80	20	10

He might be Heterozygous Polled, but he is homozygous good and out of a 10 year old cow who has never missed and remains in the herd for year 11.

19

# LRS 634L

BD: 3/10/23 • ASA#: 4199779 • Tattoo: 634L  
1/2 SM 1/2 AN • Homo Polled • Homo Black

CCR PAY DIRT 2340C

sire: CCR POUNDER 2045F

CCR MS 707 COWBOY 4123B

LRS ELEVATE 213B

dam: LRS MS ELEVATE 634D

LRS MS BISMARCK 106Y



Act. BW	90
BW Ratio	103
Adj WW	679
WW Ratio	108
Adj YW	1328
YW Ratio	114
WDA	3.64
ADG	4.08
Adj SC	39.4

Rank EPDs	CE	BW	WW	YW	ADG	MCE	Milk	STAY	DOC	CW	Marb	BF	REA	API	TI
	11.1	2.7	98.2	163.4	0.41	6.1	32.4	16.6	12.7	64.6	0.32	-0.018	0.96	139.3	90.9
	70	90	2	1	1	65	4	30	45	2	55	85	15	40	15

108 ratio off the cow and a 114 ratio at a year. A Performance machine, yet with plenty of maternal attributes to leave behind some great daughters.

20

# LRS 1150L

BD: 1/22/23 • ASA#: 4199577 • Tattoo: 1150L  
5/8 SM 3/8 AN • Homo Polled • Homo Black

CCR POUNDER 2045F

sire: CCR VARSITY 4112H

CCR MS FRONTIER 4112B

BSUM EINSTEIN 929G

dam: LRS MS DAISY 1150J

LRS MS ICONIC 955G



Act. BW	80
BW Ratio	100
Adj WW	646
WW Ratio	112
Adj YW	1233
YW Ratio	105
WDA	3.05
ADG	3.72
Adj SC	35.8

Rank EPDs	CE	BW	WW	YW	ADG	MCE	Milk	STAY	DOC	CW	Marb	BF	REA	API	TI
	15.0	-0.8	86.7	130.9	0.28	6.8	30.5	18.1	16.1	29.1	0.55	-0.025	0.55	159.1	93.5
	25	30	15	25	40	50	10	15	15	70	25	70	75	15	10

Harper's Bull she calls "Duck," because his moms name is "Daisy." Call him what you want to call him, but we call him a real beef bull. One of my favorite bulls in the pens. Didn't get a great photo oh him, but he will be easy to find. I study this bull and just think he will be a maternal machine. Out of a first calf heifer, Daisy sure hit a home run.

21

# LRS 812L

BD: 3/2/23 • ASA#: 4199807 • Tattoo: 812L  
3/4 SM 1/4 AN • Homo Polled • Homo Black

TEHAMA TAHOE B767

sire: LRS RARITY 983J

LRS MS EAGLE 983G

HOOK'S BALTIC 17B

dam: LRS MS BALTIC 812F

LRS MS NIGHTRIDE 6010D



Act. BW	88
BW Ratio	100
Adj WW	650
WW Ratio	105
Adj YW	1058
YW Ratio	95
WDA	3.03
ADG	2.58
Adj SC	35.9

Rank EPDs	CE	BW	WW	YW	ADG	MCE	Milk	STAY	DOC	CW	Marb	BF	REA	API	TI
	15.1	-3.1	72.1	109.1	0.23	7.3	21.3	19.5	14.7	28.3	0.72	-0.004	0.66	169.6	90.7
	25	10	65	65	70	45	75	10	25	70	10	90	60	5	15

Heifer bull. The first LRS Rarity Calf to sell. Rarity was 983G's first calf and sold to Gibbs and Baxleys. You are gonna like the looks of this heifer bull who can also offer some added performance.

18

# LRS 9101L

BD: 3/12/23 • ASA#: 4199819 • Tattoo: 9101L  
PB SM • Homo Polled • Homo Black

ASR AMERICAN PATRIOT F843

sire: ASR AMERICAN PROUD H0301

ASR LITTLE DESI D6273

RBS BOISE B63

dam: LRS MS BOISE 9101G

LRS MS ELEVATE 637D



Act. BW	84
BW Ratio	99
Adj WW	641
WW Ratio	103
Adj YW	1054
YW Ratio	93
WDA	2.96
ADG	2.61
Adj SC	38.0

Rank EPDs	CE	BW	WW	YW	ADG	MCE	Milk	STAY	DOC	CW	Marb	BF	REA	API	TI
	10.9	-0.2	82.5	121.7	0.25	7.8	26.7	21.9	15.5	22.2	0.39	-0.052	1.02	161.7	90.6
	60	25	30	35	45	20	25	2	15	75	20	85	25	10	15

Purebred American Proud son out of a productive young cow who is ratioing 107 for weaning on her first 3 calves



22

# LRS 869L

BD: 3/10/23 • ASA#: 4199814 • Tattoo: 869L  
3/4 SM 1/4 AN • Homo Polled • Homo Black

CCR PAY DIRT 2340C

sire: CCR POUNDER 2045F

CCR MS 707 COWBOY 4123B

HOOK'S EAGLE 6E

dam: LRS MS EAGLE 983G

LRS MS CLASS ACT 437B



Act. BW	92
BW Ratio	ET
Adj WW	562
WW Ratio	ET
Adj YW	1163
YW Ratio	ET
WDA	3.13
ADG	3.79
Adj SC	34.9

Rank EPDs	CE	BW	WW	YW	ADG	MCE	Milk	STAY	DOC	CW	Marb	BF	REA	API	TI
	12.5	-1.0	93.7	151.0	0.36	6.3	31.3	17.9	20.5	57.0	0.34	-0.037	0.80	148.9	93.1
	55	30	5	4	10	60	10	15	1	5	55	60	35	25	10

Flush Brother to Lots 4-7. This bull got sick on us and a little behind his littermates, but don't hold that against him.

# LASSLE RANCH SIMMENTALS

## LRS 769L

23

BD: 3/9/23 • ASA#: 4199793 • Tattoo: 769L  
1/2 SM 1/2 AN • Homo Polled • Homo Black

ASR AMERICAN PATRIOT F843

sire: **ASR AMERICAN PROUD H0301**

ASR LITTLE DESI D6273

PA FULL POWER 1208

dam: **LRS MS FULL POWER 711E**

LRS MS KICKSTART 597C



Act. BW	82
BW Ratio	92
Adj WW	656
WW Ratio	106
Adj YW	1265
YW Ratio	113
WDA	3.47
ADG	3.85
Adj SC	41.3

Rank	CE	BW	WW	YW	ADG	MCE	Milk	STAY	DOC	CW	Marb	BF	REA	API	TI
40	13.4	0.9	96.8	162.6	0.41	6.4	26.9	15.3	13.9	53.5	0.52	-0.021	0.82	153.6	97.2
40	60	3	1	1	60	30	45	30	10	25	70	30	20	5	

Weaned off the cow rationing 106, this huge testicled bull has been gaining like crazy and rationed 113 at a year.

## LRS 2243L

24

BD: 3/2/23 • ASA#: 4199950 • Tattoo: 2243L  
1/2 SM 1/2 AN • Homo Polled • Homo Black

TEHAMA UPWARD Y238

sire: **TEHAMA TAHOE B767**

TEHAMA MARY BLACKBIRD Y684

LRS ELEVATE 213B

dam: **LRS MS ELEVATE 6020D**

LRS MS SHRPR IMAGE 3012A



Act. BW	82
BW Ratio	ET
Adj WW	674
WW Ratio	ET
Adj YW	1063
YW Ratio	ET
WDA	3.08
ADG	2.47
Adj SC	36.9

Rank	CE	BW	WW	YW	ADG	MCE	Milk	STAY	DOC	CW	Marb	BF	REA	API	TI
35	13.9	-3.0	78.2	118.1	0.25	7.3	25.3	16.7	13.6	31.2	0.57	-0.024	0.59	156.5	90.9
35	10	40	50	60	45	40	30	35	60	20	70	70	15	15	

The only Tahoe son in the sale this year and the result of flush we did a few years back. We would have sold some full brothers to this bull in the 2021 sale. Great maternal genetics.

## LRS 902L

25

BD: 3/2/23 • ASA#: 4199817 • Tattoo: 902L  
5/8 SM 3/8 AN • Homo Polled • Homo Black

CCR PAY DIRT 2340C

sire: **CCR POUNDER 2045F**

CCR MS 707 COWBOY 4123B

HOOK'S EAGLE 6E

dam: **LRS MS EAGLE 902G**

LRS MS GAME PLAN 768E



Act. BW	88
BW Ratio	102
Adj WW	616
WW Ratio	99
Adj YW	1085
YW Ratio	95
WDA	3.00
ADG	2.97
Adj SC	33.4

Rank	CE	BW	WW	YW	ADG	MCE	Milk	STAY	DOC	CW	Marb	BF	REA	API	TI
95	8.4	2.3	107.3	178.4	0.44	2.7	29.6	11.1	14.9	65.8	0.30	-0.036	1.07	128.8	96.2
95	85	1	1	1	99	15	85	20	2	60	60	10	55	10	

Pounder son out of a young Eagle daughter with a nice udder. Check out his high rankings for WW and YW

## LRS CBL 17L

26

BD: 3/11/23 • ASA#: 4256336 • Tattoo: 17L  
1/2 SM 1/2 AN • Homo Polled • Homo Black

TEHAMA TAHOE B767

sire: **LRS RARITY 983J**

LRS MS EAGLE 983G

LRS ELEVATE 213B

dam: **CBL MS ELEVATE E447**

CBA MS TEN X A313



Act. BW	82
BW Ratio	104
Adj WW	627
WW Ratio	102
Adj YW	1077
YW Ratio	92
WDA	3.07
ADG	2.83
Adj SC	35.9

Rank	CE	BW	WW	YW	ADG	MCE	Milk	STAY	DOC	CW	Marb	BF	REA	API	TI
80	10.5	0.6	81.5	131.6	0.31	5.4	29.1	12.2	13.2	60.1	0.46	-0.023	0.87	133.5	86.2
80	55	30	25	25	75	15	75	40	3	35	70	25	50	30	

Rarity son with some added length and stretch who weaned with an actual weight just shy of 650 lbs.



Lot 23



Lot 24

## LOT COLOR CODES



### UNDERSTANDING LOT NUMBER COLOR CODES

Green Ear Tags

Blue Ear Tags

Yellow Ear Tags

Purebred Simmental Bulls

3/4 Simmental

5/8 or 1/2 Simmentals



Lot 26

27

# LRS 9145L

BD: 3/8/23 • ASA#: 4199826 • Tattoo: 9145L  
1/2 SM 1/2 AN • Homo Polled • Homo Black

MUSGRAVE 316 STUNNER

sire: DB ICONIC G95

DB MS DISCOVERY D13

HOOK'S EAGLE 6E

dam: LRS MS EAGLE 983G

LRS MS CLASS ACT 437B



Act. BW	82
BW Ratio	ET
Adj WW	593
WW Ratio	ET
Adj YW	1210
YW Ratio	ET
WDA	3.26
ADG	3.90
Adj SC	37.2

Rank	CE	BW	WW	YW	ADG	MCE	Milk	STAY	DOC	CW	Marb	BF	REA	API	TI
	13.0	0.0	102.0	167.6	0.41	5.3	26.8	15.3	14.8	62.7	0.72	-0.001	0.61	166.3	105.4
45	45	1	1	1	75	30	45	25	2	10	90	65	10	1	

flush brother to lots 1-3 and lot 38. A flush brother to the leadoff bulls who ended up in a different feeding pen as he was a little behind coming off his recip cow, but has been catching up all fall and winter.



Lot 27

28

# LRS 9117L

BD: 3/10/23 • ASA#: 4199821 • Tattoo: 9117L  
5/8 SM 3/8 AN • Homo Polled • Homo Black

CCR PAY DIRT 2340C

sire: CCR POUNDER 2045F

CCR MS 707 COWBOY 4123B

LBR NEW FRONT D211

dam: LRS MS NEW FRONT 9117G

LRS MS TEN X 432B



Act. BW	82
BW Ratio	96
Adj WW	636
WW Ratio	102
Adj YW	1170
YW Ratio	103
WDA	3.20
ADG	3.37
Adj SC	37.9

Rank	CE	BW	WW	YW	ADG	MCE	Milk	STAY	DOC	CW	Marb	BF	REA	API	TI
	17.2	-3.9	75.8	121.5	0.29	10.3	25.9	22.5	16.2	28.0	0.60	-0.002	0.41	175.3	91.7
10	5	50	40	35	10	35	1	15	75	20	90	90	3	15	

Heifer bull. His pictures don't really do him justice. Complete and total package on a heifer bull that when done breeding the heifers, can move to the mature cows.



Lot 28

29

# LRS 104L

BD: 2/23/23 • ASA#: 4199858 • Tattoo: 104L  
5/8 SM 3/8 AN • Homo Polled • Homo Black

CCR ABILENE 6018C

sire: CCR WACO 4142G

CCR MS CATALYST 4142B

TJ FLAT IRON 259G

dam: LRS MS FLAT IRON 104J

LRS MS TOP TEN 934G



Act. BW	82
BW Ratio	102
Adj WW	667
WW Ratio	-
Adj YW	1172
YW Ratio	-
WDA	3.06
ADG	3.21
Adj SC	36.0

Rank	CE	BW	WW	YW	ADG	MCE	Milk	STAY	DOC	CW	Marb	BF	REA	API	TI
	14.7	-0.5	83.8	135.9	0.33	8.4	24.8	10.8	9.6	58.6	0.96	-0.027	0.68	166.2	101.2
25	35	25	20	15	25	45	85	85	4	2	70	55	10	2	

Deep sided CCR Waco son out of a first calf heifer. Somehow he got left behind when we moved pastures on this group of cows and got weaned a little earlier than planned, hence no ratios for WW and YW.

30

# LRS 042L

BD: 3/19/23 • ASA#: 4199557 • Tattoo: 042L  
5/8 SM 3/8 AN • Homo Polled • Homo Black

CCR ABILENE 6018C

sire: CCR WACO 4142G

CCR MS CATALYST 4142B

HOOK'S EAGLE 6E

dam: LRS MS EAGLE 042H

LRS MS EASY ANSWER 811F



Act. BW	86
BW Ratio	102
Adj WW	739
WW Ratio	118
Adj YW	1331
YW Ratio	116
WDA	3.61
ADG	3.74
Adj SC	35.3

Rank	CE	BW	WW	YW	ADG	MCE	Milk	STAY	DOC	CW	Marb	BF	REA	API	TI
	15.1	0.2	96.2	149.8	0.33	8.5	26.8	12.4	14.6	64.2	0.74	-0.015	1.14	161.1	102.7
25	50	3	5	15	25	30	75	25	2	10	85	4	10	2	

Check out his performance data. Out of a young Eagle Daughter whose first calf went through the sale a year ago as well.

31

# LRS CBL 41L

BD: 3/23/23 • ASA#: 4256342 • Tattoo: 41L  
3/4 SM 1/4 AN • Homo Polled • Homo Black

WS PROCLAMATION E202

sire: BCLR MANIFESTO G352

ELLIOTT MISS 352

OPP CHARLO 533

dam: CBL MS CHARLO E557

CBL MS TURNING PNT C375



Act. BW	76
BW Ratio	97
Adj WW	615
WW Ratio	100
Adj YW	1126
YW Ratio	96
WDA	3.19
ADG	3.22
Adj SC	39.6

Rank	CE	BW	WW	YW	ADG	MCE	Milk	STAY	DOC	CW	Marb	BF	REA	API	TI
	12.2	-0.3	86.0	125.3	0.25	6.0	28.5	15.7	16.5	44.4	0.48	-0.023	0.57	144.2	89.5
55	40	20	35	60	65	20	40	10	25	30	70	75	30	20	

Manifesto is one of the top growth bulls in the breed and offers that growth in a little larger framed package. Good footed and a really balanced look, he should add some payweight to his progeny with a look the feeder buyers will like.



HARPER AND MUSIC AT THE DAWSON COUNTY FAIR

# LASSLE RANCH SIMMENTALS



Lot 32

## LRS 970L

32

BD: 3/5/23 • ASA#: 4199849 • Tattoo: 970L  
PB SM • Homo Polled • Homo Black

RBS BOISE B63  
sire: **LRS BADLANDS 401F**  
LRS MS TEN X 401B  
MCM TOP GRADE 018X  
dam: **LRS MS TOPGRADE 3015A**  
LRS MS DAKOTA 558R

Act. BW	80
BW Ratio	ET
Adj WW	600
WW Ratio	ET
Adj YW	1150
YW Ratio	ET
WDA	3.11
ADG	3.46
Adj SC	36.6



Rank	CE	BW	WW	YW	ADG	MCE	Milk	STAY	DOC	CW	Marb	BF	REA	API	TI
	10.9	3.2	85.1	132.2	0.29	8.1	28.1	14.7	13.4	37.4	0.61	-0.098	1.19	156.1	94.6
60	90	25	20	20	20	15	60	30	25	4	15	10	15	10	

Flush brother to lot 62. Badlands x 3015A donor. Have sold several of these flushmates over the last few years. Time will be this bulls best friend. Really study how complete he is.



GRACE AND HARPER HAD A GREAT WEEK AT THE 2023 AJSA WESTERN REGIONAL

## LRS 770L

33

BD: 3/15/23 • ASA#: 4199794 • Tattoo: 770L  
5/8 SM 3/8 AN • Homo Polled • Homo Black

CCR PAY DIRT 2340C  
sire: **CCR POUNDER 2045F**  
CCR MS 707 COWBOY 4123B  
LRS ELEVATE 213B  
dam: **LRS MS ELEVATE 770E**  
LRS MS EMBLAZON 1011Y

Act. BW	86
BW Ratio	98
Adj WW	635
WW Ratio	-
Adj YW	1065
YW Ratio	-
WDA	3.06
ADG	2.72
Adj SC	37.1



Rank	CE	BW	WW	YW	ADG	MCE	Milk	STAY	DOC	CW	Marb	BF	REA	API	TI
	14.1	-0.5	79.9	115.5	0.22	6.6	28.3	18.9	12.4	42.6	0.42	-0.031	0.54	147.6	84.8
35	35	35	55	80	55	20	10	50	30	40	60	80	25	35	

We really appreciate just how balanced, sound, and the look these Pounder calves represent. These are the kind of cattle that will keep you out of the ditches.



Lot 34

## LRS CBL 44L

34

BD: 3/22/23 • ASA#: 4256344 • Tattoo: 44L  
5/8 SM 3/8 AN • Homo Polled • Homo Black

REDHILL 672X X004 231A  
sire: **CLRS HOMELAND 327H**  
CLRS ALWAYS XCELLENT  
LRS FULL TIME 328C  
dam: **CBL MS FULL TIME E637**  
CBL IN SURE B334

Act. BW	78
BW Ratio	99
Adj WW	586
WW Ratio	95
Adj YW	1106
YW Ratio	94
WDA	3.09
ADG	3.28
Adj SC	34.5



Rank	CE	BW	WW	YW	ADG	MCE	Milk	STAY	DOC	CW	Marb	BF	REA	API	TI
	13.7	1.1	78.7	123.3	0.28	7.0	21.9	19.1	9.3	38.6	0.53	-0.049	0.94	153.3	85.9
40	65	40	35	40	50	70	10	85	40	25	45	15	20	30	

Homeland has been widely used in the breed the last couple years. Phenotypically strong with a balanced set of EPD's from a dam who has a WW production ratio of 104 on her calves



Lot 35

## LRS 983L

35

BD: 3/1/23 • ASA#: 4199853 • Tattoo: 983L  
3/4 SM 1/4 AN • Homo Polled • Homo Black

CCR POUNDER 2045F  
sire: **CCR VARSITY 4112H**  
CCR MS FRONTIER 4112B  
HOOK'S EAGLE 6E  
dam: **LRS MS EAGLE 983G**  
LRS MS CLASS ACT 437B

Act. BW	74
BW Ratio	87
Adj WW	557
WW Ratio	112
Adj YW	994
YW Ratio	?
WDA	2.72
ADG	2.77
Adj SC	35.4



Rank	CE	BW	WW	YW	ADG	MCE	Milk	STAY	DOC	CW	Marb	BF	REA	API	TI
	17.0	-4.0	77.2	117.9	0.25	8.5	30.1	20.6	19.6	30.4	0.64	-0.032	0.70	174.1	94.5
10	5	45	50	60	25	10	3	2	65	15	60	50	4	10	

Heifer Bull. The natural calf out of the 983G donor cow and Varsity. He appears he will be a little more moderate than her other calves, but a great heifer bull candidate who excels in the maternal traits like MCE, Milk, STAY, and docility.

36

# LRS 980L

BD: 3/9/23 • ASA#: 4199851 • Tattoo: 980L  
5/8 SM 3/8 AN • Homo Polled • Homo Black

CCR PAY DIRT 2340C

sire: **CCR POUNDER 2045F**

CCR MS 707 COWBOY 4123B

HOOK'S BALTIC 17B

dam: **LRS MS BALTIC 980G**

LRS MS FINALE 330A



Act. BW	96
BW Ratio	111
Adj WW	596
WW Ratio	96
Adj YW	1243
YW Ratio	109
WDA	3.29
ADG	4.08
Adj SC	35.3

Rank	CE	BW	WW	YW	ADG	MCE	Milk	STAY	DOC	CW	Marb	BF	REA	API	TI
	9.2	2.2	94.1	152.2	0.36	2.9	25.6	21.4	16.6	54.2	0.50	-0.017	0.57	154.1	91.8
90	85	5	4	10	99	40	2	10	10	30	85	75	20	15	

Here is another maternally oriented bull, but brings along the added performance of his sire Pounder gaining over 4 lbs a day.



37

# LRS 1179L

BD: 3/8/23 • ASA#: 4199582 • Tattoo: 1179L  
PB SM • Homo Polled • Homo Black

KOCH BIG TIMBER 685D

sire: **BRIDLE BIT GPS H078**

BRIDLE BIT MISS F840

HOOK'S EAGLE 6E

dam: **LRS MS EAGLE 1179J**

LRS MS TOPGRADE 3015A



Act. BW	74
BW Ratio	93
Adj WW	656
WW Ratio	114
Adj YW	1093
YW Ratio	105
WDA	2.89
ADG	2.77
Adj SC	34.2

Rank	CE	BW	WW	YW	ADG	MCE	Milk	STAY	DOC	CW	Marb	BF	REA	API	TI
	14.0	-2.0	84.7	121.0	0.23	8.0	22.5	16.6	8.2	20.1	0.31	-0.076	0.89	154.3	92.0
20	10	25	40	60	20	55	40	85	85	25	50	50	20	15	

Heifer Bull. Great option for heifers. The Eagle daughters are doing a nice job and this cross with GPS really clicked.



38

# LRS 865L

BD: 3/3/23 • ASA#: 4199812 • Tattoo: 865L  
1/2 SM 1/2 AN • Homo Polled • Homo Black

MUSGRAVE 316 STUNNER

sire: **DB ICONIC G95**

DB MS DISCOVERY D13

HOOK'S EAGLE 6E

dam: **LRS MS EAGLE 983G**

LRS MS CLASS ACT 437B



Act. BW	78
BW Ratio	ET
Adj WW	557
WW Ratio	ET
Adj YW	1112
YW Ratio	ET
WDA	3.01
ADG	3.52
Adj SC	35.0

Rank	CE	BW	WW	YW	ADG	MCE	Milk	STAY	DOC	CW	Marb	BF	REA	API	TI
	12.9	-1.2	89.0	146.3	0.36	4.9	26.8	14.6	16.6	46.9	0.76	0.013	0.71	164.3	100.3
45	25	10	10	10	80	30	50	10	20	10	99	50	10	3	

Flush brother to lots 1-3 and lot 27.

# \$250 SALE CREDIT

STOP BY THE RANCH AND VIEW THE BULLS BEFORE SALE DAY TO RECEIVE A \$250 SALE CREDIT AT OUR 2024 BULL SALE.

39

# LRS 918L

BD: 3/8/23 • ASA#: 4199838 • Tattoo: 918L  
5/8 SM 3/8 AN • Homo Polled • Homo Black

MUSGRAVE 316 STUNNER

sire: **LRS CROSSFIT 4306J**

LRS MS CLASS ACT 437B

HOOK'S EAGLE 6E

dam: **LRS MS EAGLE 918G**

LRS MS IRON MAN 791E



Act. BW	80
BW Ratio	94
Adj WW	589
WW Ratio	95
Adj YW	1071
YW Ratio	94
WDA	2.94
ADG	3.04
Adj SC	34.7

Rank	CE	BW	WW	YW	ADG	MCE	Milk	STAY	DOC	CW	Marb	BF	REA	API	TI
	13.4	-4.3	65.5	102.9	0.23	1.4	27.5	21.6	10.6	18.5	0.59	-0.012	0.55	164.4	85.5
40	4	85	80	70	99	25	2	75	95	20	85	75	10	30	

Cows production record is 103 on her calves for both WW and YW. Dam's first calf went through the bull sale and her daughter was kept as a replacement.



# LASSLE RANCH SIMMENTALS

## LRS CBL 45L

40

BD: 3/16/23 • ASA#: 4256345 • Tattoo: 45L  
1/2 SM 1/2 AN • Homo Polled • Homo Black

CCR PAY DIRT 2340C

sire: **CCR POUNDER 2045F**

CCR MS 707 COWBOY 4123B  
WS LIGHT SPEED E230

dam: **CBL MS LIGHT SPEED G599**

CBL MS PLATINUM B304



Act. BW	73
BW Ratio	94
Adj WW	583
WW Ratio	95
Adj YW	1120
YW Ratio	95
WDA	3.04
ADG	3.39
Adj SC	36.7

Rank	CE	BW	WW	YW	ADG	MCE	Milk	STAY	DOC	CW	Marb	BF	REA	API	TI
	10.7	0.6	82.9	129.3	0.29	6.2	28.1	15.0	16.4	36.6	0.67	-0.006	0.53	150.0	91.5
75	55	25	25	35	60	20	45	10	45	15	90	80	25	15	

Like all the pounder sons in the sale, balance trait genetics is the word backed up by an excellent phenotype.

## LRS 190L

41

BD: 2/21/23 • ASA#: 4199592 • Tattoo: 190L  
1/2 SM 1/2 AN • Homo Polled • Homo Black

MILL BRAE IDENTIFIED 4031

sire: **HF SAFE & SOUND 019**

HF EMPRESS 804  
LRS BADLANDS 401F

dam: **LRS MS BADLANDS 190J**

LRS MS TOPGRADE 331A



Act. BW	70
BW Ratio	TW
Adj WW	558
WW Ratio	TW
Adj YW	1155
YW Ratio	TW
WDA	3.10
ADG	3.78
Adj SC	38.9

Rank	CE	BW	WW	YW	ADG	MCE	Milk	STAY	DOC	CW	Marb	BF	REA	API	TI
	15.9	0.5	95.8	154.3	0.37	11.2	28.7	9.0	13.5	56.4	0.70	-0.024	0.92	153.3	101.7
15	55	3	3	4	4	15	95	35	5	10	70	20	20	2	

What a tank. Moderate and deep, deep, deep. Used Safe and Sound as an Angus bull on our heifers. Great calving ease with some extra punch.

## LRS 079L

42

BD: 3/24/23 • ASA#: 4199570 • Tattoo: 079L  
5/8 SM 3/8 AN • Homo Polled • Homo Black

CCR ABILENE 6018C

sire: **CCR WACO 4142G**

CCR MS CATALYST 4142B  
BASIN RAINMAKER 4404

dam: **LRS MS RAINMAKER 079H**

LRS MS AXIS 228Z



Act. BW	92
BW Ratio	109
Adj WW	618
WW Ratio	99
Adj YW	1069
YW Ratio	93
WDA	2.96
ADG	2.86
Adj SC	33.1

Rank	CE	BW	WW	YW	ADG	MCE	Milk	STAY	DOC	CW	Marb	BF	REA	API	TI
	11.8	-0.5	77.9	126.1	0.30	8.2	26.3	16.1	16.0	64.5	0.59	-0.026	0.91	150.6	88.4
60	35	40	30	30	30	30	35	15	2	20	70	20	25	25	

Late March calf out of a productive young cow whose first calf was retained in the heifer pen. Dam is a daughter of the old 228Z donor cow

## LRS 191L

43

BD: 3/5/23 • ASA#: 4199593 • Tattoo: 191L  
5/8 SM 3/8 AN • Homo Polled • Homo Black

CCR ABILENE 6018C

sire: **CCR WACO 4142G**

CCR MS CATALYST 4142B  
TJ FLAT IRON 259G

dam: **LRS MS FLAT IRON 191J**

LRS MS ROBUST 423B



Act. BW	84
BW Ratio	105
Adj WW	561
WW Ratio	97
Adj YW	1064
YW Ratio	102
WDA	2.71
ADG	3.19
Adj SC	33.1

Rank	CE	BW	WW	YW	ADG	MCE	Milk	STAY	DOC	CW	Marb	BF	REA	API	TI
	14.7	-2.5	72.1	114.6	0.27	8.0	25.4	13.4	10.0	31.1	0.71	-0.013	0.75	156.3	90.6
25	15	65	55	45	35	40	65	80	65	10	85	40	15	20	

Out of a first calf heifer who has been doing well on test and ratioing 102 at a year. Waco is a complete outcross bull to our program.



Lot 40



Lot 41



Lot 42



Lot 43

44

# LRS 192L

BD: 3/5/23 • ASA#: 4199594 • Tattoo: 192L  
5/8 SM 3/8 AN • Homo Polled • Homo Black

CCR ABILENE 6018C

sire: CCR WACO 4142G

CCR MS CATALYST 4142B

BASIN RAINMAKER 4404

dam: LRS MS RAINMAKER 4404 192J

LRS MS 3324-793E



Act. BW	76
BW Ratio	95
Adj WW	598
WW Ratio	104
Adj YW	1134
YW Ratio	109
WDA	2.93
ADG	3.40
Adj SC	35.1

Rank	CE	BW	WW	YW	ADG	MCE	Milk	STAY	DOC	CW	Marb	BF	REA	API	TI
	16.2	-2.7	69.1	115.7	0.29	10.9	28.5	13.3	15.2	40.4	0.76	-0.021	0.66	160.9	91.0
	15	10	75	55	35	5	20	65	20	35	10	70	60	10	15

Heifer bull. Out of a Rainmaker 4404 1st calf heifer. A heifer bull who also is getting it done when it comes to individual performance ratioing over 100 for both WW and YW

45

# LRS 072L

BD: 4/15/23 • ASA#: 4199567 • Tattoo: 072L  
5/8 SM 3/8 AN • Homo Polled • Homo Black

CCR POUNDER 2045F

sire: CCR VARSITY 4112H

CCR MS FRONTIER 4112B

BASIN RAINMAKER 4404

dam: LRS MS RAINMAKER 072H

LRS MS CLASS ACT 453B



Act. BW	90
BW Ratio	107
Adj WW	650
WW Ratio	104
Adj YW	1202
YW Ratio	-
WDA	3.29
ADG	3.35
Adj SC	36.3

Rank	CE	BW	WW	YW	ADG	MCE	Milk	STAY	DOC	CW	Marb	BF	REA	API	TI
	9.4	0.8	87.6	134.9	0.30	5.5	31.2	17.7	16.7	64.9	0.26	-0.027	0.78	132.6	83.9
	90	60	15	20	30	75	10	20	10	2	70	70	35	50	40

Same cow family as the 983G cow and sired by the Varsity bull. His Rainmaker 4404 sired momma had her first calf go through the sale a year ago. Just an April 15th calf - the youngest in the sale. To young to get a YW Ratio



46

# LRS 065L

BD: 4/8/23 • ASA#: 4199564 • Tattoo: 065L  
5/8 SM 3/8 AN • Homo Polled • Homo Black

CCR POUNDER 2045F

sire: CCR VARSITY 4112H

CCR MS FRONTIER 4112B

BASIN RAINMAKER 4404

dam: LRS MS RAINMAKER 065H

LRS MS CLASS ACT 5118C



Act. BW	86
BW Ratio	102
Adj WW	608
WW Ratio	97
Adj YW	1143
YW Ratio	-
WDA	3.13
ADG	3.35
Adj SC	35.4

Rank	CE	BW	WW	YW	ADG	MCE	Milk	STAY	DOC	CW	Marb	BF	REA	API	TI
	12.1	-0.6	85.0	133.0	0.30	4.3	30.1	16.4	16.7	53.7	0.23	-0.037	0.69	133.9	83.9
	60	35	20	20	30	90	10	30	10	10	75	60	55	50	40

This would be a full brother in blood to lot 45, out of two different full sisters from the same tribe as the 983G cow family. Proven genetic line for both maternal and growth traits and check out his birthdate, only an April 8th baby.



47

# LRS 071L

BD: 3/19/23 • ASA#: 4199566 • Tattoo: 071L  
PB SM • Homo Polled • Homo Black

KOCH BIG TIMBER 685D

sire: BRIDLE BIT GPS H078

BRIDLE BIT MISS F840

NLC GEN TEN 82E

dam: LRS MS GEN TEN 071H

LRS MS CLASS ACT 437B



Act. BW	74
BW Ratio	TW
Adj WW	539
WW Ratio	TW
Adj YW	1007
YW Ratio	TW
WDA	2.81
ADG	2.95
Adj SC	33.3

Rank	CE	BW	WW	YW	ADG	MCE	Milk	STAY	DOC	CW	Marb	BF	REA	API	TI
	13.2	-1.1	86.2	135.9	0.31	4.3	22.9	17.4	5.8	45.7	0.21	-0.064	0.90	149.8	89.4
	25	15	20	15	15	80	55	30	95	10	40	70	45	25	20

When we sort these bulls we try to do it by type and kind. This bull and the previous 2 bulls are all highly related so it is no surprise they are penned together. Consistency pays big dividends and we are always making breeding decisions with that in mind. You can't achieve it with fire and Ice matings when it comes to phenotype or genetic predictions.

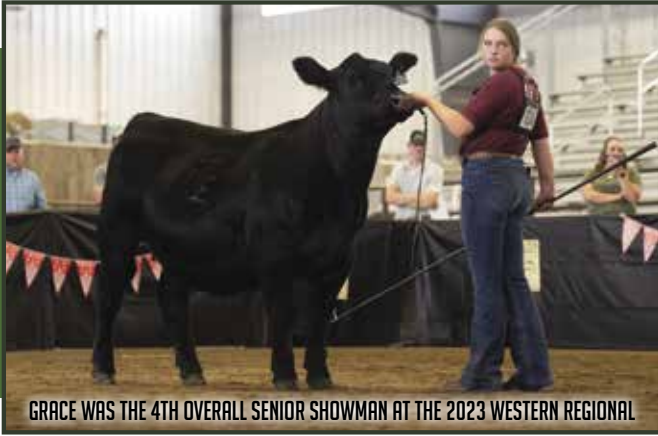


# VOLUME DISCOUNTS

## BUYER VOLUME DISCOUNTS

We will be offering discounts for volume bull buyers:  
3 head - 3% | 4 head - 4% | 5 or more head 5%

# LASSLE RANCH SIMMENTALS



GRACE WAS THE 4TH OVERALL SENIOR SHOWMAN AT THE 2023 WESTERN REGIONAL



Lot 49



Lot 50

51

## LRS 1183L

BD: 3/2/23 • ASA#: 4199584 • Tattoo: 1183L  
1/2 SM 1/2 AN • Homo Polled • Homo Black

MILL BRAE IDENTIFIED 4031

sire: **HF SAFE & SOUND 019**

HF EMPRESS 804

WS PROCLAMATION E202

dam: **LRS MS PROCLAMATION 1183J**

LRS MS ELEVATE 6033D



Act. BW	70
BW Ratio	88
Adj WW	514
WW Ratio	89
Adj YW	930
YW Ratio	90
WDA	2.40
ADG	2.66
Adj SC	35.4

Rank EPDs	CE	BW	WW	YW	ADG	MCE	Milk	STAY	DOC	CW	Marb	BF	REA	API	TI
	20.7	-2.8	70.0	107.9	0.24	13.6	27.7	19.1	13.5	39.3	0.65	0.015	0.43	170.1	87.8
	2	10	70	70	65	1	25	10	35	35	15	99	90	5	25

Heifer bull. Safe and sound heifer bull out of a first calf heifer who was part of a flush we did a few years ago where her brothers averaged over \$7500.

48

## LRS 943L

BD: 3/10/23 • ASA#: 4199843 • Tattoo: 943L  
1/2 SM 1/2 AN • Homo Polled • Homo Black

MUSGRAVE 316 STUNNER

sire: **DB ICONIC G95**

DB MS DISCOVERY D13

NLC GEN TEN 82E

dam: **LRS MS CLEO 0142H**

LRS MS TOPGRADE 303A



Act. BW	88
BW Ratio	ET
Adj WW	588
WW Ratio	ET
Adj YW	1011
YW Ratio	ET
WDA	2.87
ADG	2.69
Adj SC	36.9

Rank EPDs	CE	BW	WW	YW	ADG	MCE	Milk	STAY	DOC	CW	Marb	BF	REA	API	TI
	13.5	1.1	96.1	150.1	0.34	5.7	25.0	16.2	13.9	44.4	0.76	0.013	0.60	165.3	101.0
	40	65	3	4	10	70	45	35	30	25	10	99	70	10	2

Flush brother to lots 10-12. Another good one from the 0142H flush who ended up in a different pen than his brothers earlier

49

## LRS CBL 6L

BD: 3/8/23 • ASA#: 4256331 • Tattoo: 6L  
1/2 SM 1/2 AN • Homo Polled • Homo Black

CCR PAY DIRT 2340C

sire: **CCR POUNDER 2045F**

CCR MS 707 COWBOY 4123B

OPP ARSENAL 550

dam: **CBL MS ARSENAL E517**

LRS MS 77T-9003W



Act. BW	74
BW Ratio	94
Adj WW	545
WW Ratio	89
Adj YW	1030
YW Ratio	88
WDA	2.87
ADG	3.06
Adj SC	36.7

Rank EPDs	CE	BW	WW	YW	ADG	MCE	Milk	STAY	DOC	CW	Marb	BF	REA	API	TI
	16.1	-0.1	83.9	132.6	0.30	9.6	33.8	19.9	17.3	47.2	0.36	-0.016	0.43	151.5	86.4
	15	45	25	20	30	15	2	5	10	20	50	85	90	20	30

Check out his great maternal indicators: CE, MCE, Milk, Stay, and docility. Keep every daughter.

50

## LRS 189L

BD: 3/24/23 • ASA#: 4199591 • Tattoo: 189L  
5/8 SM 3/8 AN • Homo Polled • Homo Black

CCR POUNDER 2045F

sire: **CCR VARSITY 4112H**

CCR MS FRONTIER 4112B

LRS BADLANDS 401F

dam: **LRS MS BADLANDS 189J**

LRS MS TEN X 432B



Act. BW	74
BW Ratio	93
Adj WW	626
WW Ratio	109
Adj YW	1095
YW Ratio	105
WDA	2.89
ADG	2.98
Adj SC	34.6

Rank EPDs	CE	BW	WW	YW	ADG	MCE	Milk	STAY	DOC	CW	Marb	BF	REA	API	TI
	14.9	-0.8	85.7	125.0	0.25	9.4	30.5	17.4	17.5	31.9	0.46	-0.019	0.58	151.1	90.2
	25	30	20	35	60	15	10	20	10	60	35	85	70	20	20

This rascal ratioed 109 at weaning and 105 at a year out of a first calf heifer who calved in with a beautiful udder.

52

## LRS 6014L

BD: 3/11/23 • ASA#: 4199771 • Tattoo: 6014L  
1/2 SM 1/2 AN • Homo Polled • Homo Black

MUSGRAVE 316 STUNNER

sire: **DB ICONIC G95**

DB MS DISCOVERY D13

HOOK'S YELLOWSTONE 97Y

dam: **LRS MS YELLOWSTONE 6014D**

LRS MS DAKOTA 559R



Act. BW	90
BW Ratio	101
Adj WW	628
WW Ratio	101
Adj YW	1192
YW Ratio	107
WDA	3.31
ADG	3.57
Adj SC	37.4

Rank EPDs	CE	BW	WW	YW	ADG	MCE	Milk	STAY	DOC	CW	Marb	BF	REA	API	TI
	10.3	-0.1	87.4	141.7	0.34	4.6	23.6	13.5	13.9	57.4	0.76	-0.026	0.68	155.6	97.2
	80	45	15	10	10	85	55	65	30	5	10	70	55	15	5

One thing about these DB Iconic bulls, they are very consistent. They have a nice look to them, and are all good marbling bulls.



53

# LRS 9158L

BD: 3/29/23 • ASA#: 4199831 • Tattoo: 9158L  
PB SM • Homo Polled • Homo Black

LRS BADLANDS 401F

sire: LRS FASTBALL 014J

LRS MS CLASS ACT 437B

LRS ICONIC 303C

dam: LRS MS ICONIC 9158G

LRS MS OLIE 078X



Act. BW	86
BW Ratio	101
Adj WW	717
WW Ratio	115
Adj YW	1252
YW Ratio	110
WDA	3.51
ADG	3.37
Adj SC	37.9

Rank	CE	BW	WW	YW	ADG	MCE	Milk	STAY	DOC	CW	Marb	BF	REA	API	TI
EPDs	12.2	0.8	87.7	138.8	0.32	5.2	27.9	18.0	12.9	57.2	0.41	-0.094	1.15	158.7	94.0
Rank	40	40	20	15	10	65	20	25	35	2	15	15	10	15	10

Fastball was a bull we kept a couple years ago after he got hurt and we pulled him from the sale. We did not get many calves from him, but we sure like the ones we got. Don Griffin bought his full brother that year and loves those calves. His young dam is ratioging 112 for WW on her production report.



54

# LRS 059L

BD: 3/22/23 • ASA#: 4199561 • Tattoo: 059L  
1/2 SM 1/2 AN • Homo Polled • Homo Black

MUSGRAVE 316 STUNNER

sire: LRS CROSSFIT 4306J

LRS MS CLASS ACT 437B

BASIN RAINMAKER 4404

dam: LRS MS EMERALD 059H

LRS MS STAR 5120C



Act. BW	90
BW Ratio	107
Adj WW	667
WW Ratio	107
Adj YW	1197
YW Ratio	104
WDA	3.28
ADG	3.35
Adj SC	37.5

Rank	CE	BW	WW	YW	ADG	MCE	Milk	STAY	DOC	CW	Marb	BF	REA	API	TI
EPDs	7.1	1.8	89.8	143.9	0.34	1.7	30.5	16.1	13.3	80.3	0.30	-0.028	1.13	128.9	85.1
Rank	99	80	10	10	10	99	10	35	40	1	60	70	4	55	35

Crossfit from a great young cow in our program with a bright future. Her first calf is in with the bred heifers. Appreciate this calf for all his muscle and length.



55

# LRS 009L

BD: 3/19/23 • ASA#: 4199546 • Tattoo: 009L  
5/8 SM 3/8 AN • Homo Polled • Homo Black

MUSGRAVE 316 STUNNER

sire: LRS CROSSFIT 4306J

LRS MS CLASS ACT 437B

HOOK'S EAGLE 6E

dam: LRS MS EAGLE 009H

LRS MS TOP TEN 803F



Act. BW	84
BW Ratio	100
Adj WW	712
WW Ratio	114
Adj YW	1172
YW Ratio	102
WDA	3.26
ADG	2.91
Adj SC	37.3

Rank	CE	BW	WW	YW	ADG	MCE	Milk	STAY	DOC	CW	Marb	BF	REA	API	TI
EPDs	11.1	-1.1	89.3	135.7	0.29	2.4	28.0	16.6	16.2	43.7	0.61	0.007	0.77	155.1	95.6
Rank	70	30	10	20	35	99	20	30	15	25	20	95	40	20	10

Want pounds off the cow, this bull will do it with his power and 114 WW ratio. Dam is an eagle daughter who is ratioging over 100 for both WW and YW on her first 2 calves.

56

# LRS 933L

BD: 3/10/23 • ASA#: 4199841 • Tattoo: 933L  
3/4 SM 1/4 AN • Homo Polled • Homo Black

WS PROCLAMATION E202

sire: 307 BACKROADS 736G

PANNELL MISS 736

RBS BOISE B63

dam: LRS MS BOISE 933G

LRS MS PASQUE 732E



Act. BW	72
BW Ratio	85
Adj WW	646
WW Ratio	104
Adj YW	1109
YW Ratio	97
WDA	3.08
ADG	2.93
Adj SC	37.9

Rank	CE	BW	WW	YW	ADG	MCE	Milk	STAY	DOC	CW	Marb	BF	REA	API	TI
EPDs	16.5	0.1	74.4	106.9	0.20	10.9	27.0	15.7	10.7	17.6	0.37	-0.040	0.23	138.4	79.8
Rank	15	45	55	70	90	5	25	40	75	95	50	60	99	40	55

Heifer bull. 3/4 blood heifer bull with a pedigree that is a little different for our longtime customers.

57

# LRS 453L

BD: 3/9/23 • ASA#: 4199760 • Tattoo: 453L  
PB SM • Homo Polled • Homo Black

HOOK'S EAGLE 6E

sire: LRS FALCON 442G

LRS MS CLASS ACT 437B

LRS ELEVATE 213B

dam: LRS MS ELEVATE 6020D

LRS MS SHRPR IMAGE 3012A



Act. BW	82
BW Ratio	ET
Adj WW	619
WW Ratio	ET
Adj YW	1055
YW Ratio	ET
WDA	2.97
ADG	2.75
Adj SC	36.3

Rank	CE	BW	WW	YW	ADG	MCE	Milk	STAY	DOC	CW	Marb	BF	REA	API	TI
EPDs	10.6	0.3	88.7	137.6	0.31	5.4	22.0	18.8	14.4	41.6	0.16	-0.078	1.09	145.6	88.1
Rank	65	30	15	15	15	60	60	15	20	15	50	50	15	30	25

The only Falcon embryo we ever got out of this flush with the 6020D cow. The Falcon calves have been very well received over the last few years around the region for the sensible calving ease and birthweights, but yet some added performance.

58

# LRS 9142L

BD: 3/7/23 • ASA#: 4199825 • Tattoo: 9142L  
1/2 SM 1/2 AN • Homo Polled • Homo Black

WERNER FLAT TOP 4136

sire: TJ FLAT IRON 259G

TJ 33Y

A A R TEN X 7008 S A

dam: LRS MS TEN X 401B

LRS MS AXIS 228Z



Act. BW	88
BW Ratio	ET
Adj WW	592
WW Ratio	ET
Adj YW	983
YW Ratio	ET
WDA	2.79
ADG	2.47
Adj SC	35.7

Rank	CE	BW	WW	YW	ADG	MCE	Milk	STAY	DOC	CW	Marb	BF	REA	API	TI
EPDs	11.9	0.0	83.5	125.5	0.26	6.1	33.1	13.6	-0.8	53.7	0.72	-0.017	0.49	151.7	93.9
Rank	60	45	25	35	50	65	3	60	99	10	10	85	85	20	10

Flat Iron x 401B, also known as the dam of LRS Badlands who was heavily used back in our program.

# LASSLE RANCH SIMMENTALS

## LRS CBL 48L

59

BD: 3/21/23 • ASA#: 4256346 • Tattoo: 48L  
5/8 SM 3/8 AN • Homo Polled • Homo Black

HOOK'S EAGLE 6E

sire: **LRS FALCON 442G**

LRS MS CLASS ACT 437B

OPP BRONC 821

dam: **CBL MS BRONC H220**

CBL MS ICONIC F278



Act. BW	72
BW Ratio	94
Adj WW	607
WW Ratio	99
Adj YW	1213
YW Ratio	103
WDA	3.22
ADG	3.83
Adj SC	36.0

Rank	CE	BW	WW	YW	ADG	MCE	Milk	STAY	DOC	CW	Marb	BF	REA	API	TI
	14.2	-2.1	85.4	144.4	0.37	8.1	24.7	20.9	16.0	49.4	0.42	-0.035	0.82	161.1	91.4
	30	15	20	10	4	30	45	3	15	15	40	60	30	10	15

Falcon bull who has been gaining like crazy on test to ratio 103 at a year. Daughters should last a long time with his excellent stayability prediction.

## LRS 9164L

60

BD: 3/23/23 • ASA#: 4199835 • Tattoo: 9164L  
1/2 SM 1/2 AN • Homo Polled • Homo Black

WS PROCLAMATION E202

sire: **307 BACKROADS 736G**

PANNELL MISS 736

S A V RAINDANCE 6848

dam: **LRS MS RAINDANCE 9164G**

LRS MS OLIE 078X

Act. BW	90
BW Ratio	104
Adj WW	667
WW Ratio	107
Adj YW	1114
YW Ratio	98
WDA	3.19
ADG	2.83
Adj SC	36.6

Rank	CE	BW	WW	YW	ADG	MCE	Milk	STAY	DOC	CW	Marb	BF	REA	API	TI
	12.6	0.2	74.7	120.7	0.29	5.9	27.9	14.8	12.0	60.0	0.28	-0.046	0.76	129.7	78.3
	50	50	55	40	35	70	20	50	55	3	65	45	40	55	60

Came in over 650 lbs off the cow ratioing 103 and hard to pick apart phenotypically. Got a little nervous when we tried to picture him, might be better for operation where he doesn't get singled out.

## LRS 330L

61

BD: 3/10/23 • ASA#: 4199690 • Tattoo: 330L  
1/2 SM 1/2 AN • Homo Polled • Homo Black

MUSGRAVE 316 STUNNER

sire: **LRS CROSSFIT 4306J**

LRS MS CLASS ACT 437B

TNT FINALE W241

dam: **LRS MS FINALE 330A**

LRS MS PIONEER 137Y



Act. BW	90
BW Ratio	103
Adj WW	633
WW Ratio	102
Adj YW	1123
YW Ratio	100
WDA	3.13
ADG	3.08
Adj SC	36.9

Rank	CE	BW	WW	YW	ADG	MCE	Milk	STAY	DOC	CW	Marb	BF	REA	API	TI
	8.6	0.3	71.3	113.2	0.26	2.2	30.3	23.5	13.7	44.0	0.55	0.012	0.90	154.1	82.0
	95	50	65	60	50	99	10	1	35	25	25	99	20	20	45

Good crossfit calf out of an 10 year old cow who over the years has been really productive. maintaining a 367 day calving interval over the years. Can't ever have enough cows like her.

## LRS 838L

62

BD: 3/3/23 • ASA#: 4199811 • Tattoo: 838L  
PB SM • Homo Polled • Homo Black

RBS BOISE B63

sire: **LRS BADLANDS 401F**

LRS MS TEN X 401B

MCM TOP GRADE 018X

dam: **LRS MS TOPGRADE 3015A**

LRS MS DAKOTA 558R



Act. BW	86
BW Ratio	ET
Adj WW	698
WW Ratio	ET
Adj YW	1143
YW Ratio	ET
WDA	3.24
ADG	2.80
Adj SC	38.5

Rank	CE	BW	WW	YW	ADG	MCE	Milk	STAY	DOC	CW	Marb	BF	REA	API	TI
	10.6	0.2	79.2	112.4	0.21	7.9	28.1	13.8	13.2	25.8	0.61	-0.085	1.02	154.6	93.6
	65	30	45	60	75	20	15	70	30	65	4	30	25	20	10

Flush brother to lot 32. Not nearly as pretty as his brother, but shows up with a little more substance and middle. The last of these embryos we had in the tank. You study the EPDs and maybe don't get excited, but put them in an index like API and he ranks in the top 20% of the breed. Multi trait balance at its finest.

## LRS 509L

63

BD: 3/4/23 • ASA#: 4199766 • Tattoo: 509L  
1/2 SM 1/2 AN • Homo Polled • Homo Black

CCR PAY DIRT 2340C

sire: **CCR POUNDER 2045F**

CCR MS 707 COWBOY 4123B

PA FULL POWER 1208

dam: **LRS MS FULL POWER 509C**

LRS MS ADJUSTER 351A



Act. BW	86
BW Ratio	98
Adj WW	671
WW Ratio	108
Adj YW	1134
YW Ratio	101
WDA	3.25
ADG	2.91
Adj SC	41.5

Rank	CE	BW	WW	YW	ADG	MCE	Milk	STAY	DOC	CW	Marb	BF	REA	API	TI
	11.5	-0.3	88.9	144.2	0.35	3.8	32.3	20.1	14.5	30.9	0.35	-0.036	0.46	149.3	89.5
	65	40	10	10	10	95	4	5	25	65	50	60	90	25	20

108 WW ratio last fall. I can say it a lot, it is bulls like these who are out of a proven sires and proven time tested cow families that will keep you between the lines.

## LRS CBL 36L

64

BD: 3/18/23 • ASA#: 4256340 • Tattoo: 36L  
1/2 SM 1/2 AN • Homo Polled • Homo Black

LD CAPITALIST 316

sire: **LRS TYCOON 120H**

LRS MS CLASS ACT 437B

LRS TOP TEN 104A

dam: **CBL MS TOP TEN D266**

CBL MS AXIS Z242



Act. BW	78
BW Ratio	99
Adj WW	648
WW Ratio	105
Adj YW	1222
YW Ratio	104
WDA	3.39
ADG	3.61
Adj SC	35.8

Rank	CE	BW	WW	YW	ADG	MCE	Milk	STAY	DOC	CW	Marb	BF	REA	API	TI
	12.0	0.7	81.5	129.6	0.30	7.0	25.5	19.0	13.0	45.3	0.13	-0.028	0.72	130.2	77.6
	60	60	30	25	30	50	40	10	45	20	90	70	45	55	60

Performance and performance. No surprise he ratioed over 100 for both WW and YW as his dam is ratioing 106 for WW and 107 for YW on her progeny.

## LRS 8040L

65

BD: 3/6/23 • ASA#: 4199805 • Tattoo: 8040L  
5/8 SM 3/8 AN • Homo Polled • Homo Black

TEHAMA TAHOE B767

sire: **LRS RARITY 983J**

LRS MS EAGLE 983G

LRS ICONIC 303C

dam: **LRS MS ICONIC 8040F**

LRS MS DUAL FOCUS 213Z



Act. BW	90
BW Ratio	103
Adj WW	667
WW Ratio	107
Adj YW	1202
YW Ratio	104
WDA	3.34
ADG	3.37
Adj SC	33.6

Rank	CE	BW	WW	YW	ADG	MCE	Milk	STAY	DOC	CW	Marb	BF	REA	API	TI
	12.7	0.7	91.3	147.5	0.35	6.3	26.9	15.5	14.0	53.9	0.54	-0.023	0.94	151.5	94.4
	50	60	10	10	10	60	30	40	30	10	25	70	15	20	10

The few Rarity calves we have all have one thing in common and they are long sided. Dam has had 2 other bull calves sell through previous sales.



66

# LRS 9165L

BD: 3/9/23 • ASA#: 4199836 • Tattoo: 9165L  
5/8 SM 3/8 AN • Homo Polled • Homo Black

MUSGRAVE 316 STUNNER

sire: **LRS CROSSFIT 4306J**

LRS MS CLASS ACT 437B

HOOK'S EAGLE 6E

dam: **LRS MS EAGLE 9165G**

LRS MS DUAL FOCUS 213Z



Act. BW	82
BW Ratio	95
Adj WW	622
WW Ratio	100
Adj YW	1017
YW Ratio	89
WDA	2.88
ADG	2.50
Adj SC	38.8

Rank EPDs	CE	BW	WW	YW	ADG	MCE	Milk	STAY	DOC	CW	Marb	BF	REA	API	TI
	12.5	-2.0	72.4	109.2	0.23	4.0	27.3	20.4	15.5	30.9	0.73	0.010	0.71	166.1	89.8
	55	20	65	65	70	90	25	4	15	65	10	99	50	10	20

Dam is a young Eagle Daughter who had a son sell through the sale last year as well. Excellent staybility and API Rankings

68

# LRS 612L

BD: 3/15/23 • ASA#: 4199776 • Tattoo: 612L  
1/2 SM 1/2 AN • Homo Polled • Homo Black

MUSGRAVE 316 STUNNER

sire: **LRS CROSSFIT 4306J**

LRS MS CLASS ACT 437B

SCHIEFELBEIN EFFECTIVE 61

dam: **LRS MS EFFECTIVE 612D**

LRS MS AXIS 260Z



Act. BW	102
BW Ratio	116
Adj WW	654
WW Ratio	104
Adj YW	1050
YW Ratio	91
WDA	3.08
ADG	2.50
Adj SC	37.1

Rank EPDs	CE	BW	WW	YW	ADG	MCE	Milk	STAY	DOC	CW	Marb	BF	REA	API	TI
	6.5	5.6	94.3	147.9	0.33	-1.5	27.7	16.2	12.5	64.8	0.58	-0.030	1.06	138.5	90.0
	99	99	4	5	15	99	25	35	50	2	20	70	10	40	20

His dam is highly productive. This is her 5th bull calf and they have all made the sale. Her only daughter is in the bred heifer pen as well. Little extra bw, but will work fine on a set of mature cows.

70

# LRS 562L

BD: 3/9/23 • ASA#: 4199770 • Tattoo: 562L  
5/8 SM 3/8 AN • Homo Polled • Homo Black

MUSGRAVE 316 STUNNER

sire: **LRS CROSSFIT 4306J**

LRS MS CLASS ACT 437B

CDI CRUISE 230A

dam: **MFSR CRUISE562G**

RYMO GOLD REVENUE A07C



Act. BW	98
BW Ratio	114
Adj WW	624
WW Ratio	100
Adj YW	1114
YW Ratio	98
WDA	3.08
ADG	3.10
Adj SC	35.3

Rank EPDs	CE	BW	WW	YW	ADG	MCE	Milk	STAY	DOC	CW	Marb	BF	REA	API	TI
	8.0	3.0	76.8	119.2	0.27	1.7	28.1	19.8	12.6	54.8	0.44	-0.040	1.09	137.5	79.5
	95	90	45	45	45	99	20	5	50	10	40	60	10	40	55

Harper's bull she calls Avacodo. Expect this bull to improve carcass traits with his muscle and high REA EPD from a hard working cow who always brings in a good calf with her 106 WW ratio on her first 3 calves. Her first calf sold through the sale and her 2nd calf is in the bred heifer pens.

72

# LRS 757L

BD: 3/13/23 • ASA#: 4199789 • Tattoo: 757L  
3/4 SM 1/4 AN • Homo Polled • Homo Black

ASR AMERICAN PATRIOT F843

sire: **ASR AMERICAN PROUD H0301**

ASR LITTLE DESI D6273

MAR INNOVATION 251

dam: **LRS MS INNOVATION 757E**

LRS MS UPGRADE 276Z



Act. BW	90
BW Ratio	103
Adj WW	659
WW Ratio	105
Adj YW	1176
YW Ratio	101
WDA	3.33
ADG	3.26
Adj SC	37.0

Rank EPDs	CE	BW	WW	YW	ADG	MCE	Milk	STAY	DOC	CW	Marb	BF	REA	API	TI
	11.4	-0.3	82.1	128.4	0.29	7.7	27.4	16.2	13.0	35.5	0.51	-0.024	0.98	147.3	89.2
	65	40	30	30	35	35	25	35	45	50	30	70	15	25	20

Big Testicled square made calf that weaned off ratioing 105.

67

# LRS 792L

BD: 3/12/23 • ASA#: 4199801 • Tattoo: 792L  
5/8 SM 3/8 AN • Homo Polled • Homo Black

MUSGRAVE 316 STUNNER

sire: **LRS CROSSFIT 4306J**

LRS MS CLASS ACT 437B

BDV KICKSTART 105A

dam: **LRS MS KICKSTART 792E**

LRS MS TOPGRADE 3020A



Act. BW	88
BW Ratio	100
Adj WW	632
WW Ratio	101
Adj YW	1123
YW Ratio	97
WDA	3.17
ADG	3.10
Adj SC	38.5

Rank EPDs	CE	BW	WW	YW	ADG	MCE	Milk	STAY	DOC	CW	Marb	BF	REA	API	TI
	10.7	0.3	73.1	107.2	0.21	3.2	27.3	20.4	10.5	38.7	0.59	-0.030	0.54	151.8	83.5
	75	50	60	70	85	95	25	4	75	40	20	70	80	20	40

Another bull who if you study all the data, nothing jumps out at you, however when put into an index like API and he ranks in the top 20% of the breed

69

# LRS 9150L

BD: 3/9/23 • ASA#: 4199827 • Tattoo: 9150L  
1/2 SM 1/2 AN • Homo Polled • Homo Black

MUSGRAVE 316 STUNNER

sire: **DB ICONIC G95**

DB MS DISCOVERY D13

ELLIOTT A100

dam: **LRS MS A100 9150G**

LRS MS TOPGRADE 426B



Act. BW	92
BW Ratio	107
Adj WW	698
WW Ratio	112
Adj YW	1280
YW Ratio	113
WDA	3.51
ADG	3.70
Adj SC	37.3

Rank EPDs	CE	BW	WW	YW	ADG	MCE	Milk	STAY	DOC	CW	Marb	BF	REA	API	TI
	11.6	0.3	96.0	153.6	0.36	4.6	23.6	12.9	13.6	54.1	0.75	-0.022	0.87	158.3	102.1
	65	50	3	3	10	85	55	70	35	10	10	70	25	15	2

112 WW Ratio and 113 YW Ratio. His young dam did a great job in a tough year fighting flies and competing with the grasshoppers.

71

# LRS CBL 65L

BD: 3/29/23 • ASA#: 4256352 • Tattoo: 65L  
1/2 SM 1/2 AN • Homo Polled • Homo Black

WS PROCLAMATION E202

sire: **CHSR WIDE VIEW 120J**

BCLR MISS WIDE RNGE D653

OPP ARSENAL 550

dam: **CBA MS ARSENAL E578**

CBA MS TEN X B74



Act. BW	74
BW Ratio	93
Adj WW	618
WW Ratio	100
Adj YW	1198
YW Ratio	102
WDA	3.33
ADG	3.67
Adj SC	38.9

Rank EPDs	CE	BW	WW	YW	ADG	MCE	Milk	STAY	DOC	CW	Marb	BF	REA	API	TI
	17.1	0.0	83.6	138.4	0.34	9.8	27.6	18.0	12.4	41.6	0.63	-0.029	0.67	165.6	93.4
	10	45	25	15	10	15	25	15	50	30	15	70	55	10	10

If you got a good memory, this is a maternal brother to lot 73 Falcon bull a year ago who was a top seller. His dam brings in another good calf this year and is no surprise with her 104 WW Ratio and 112 YW Ratio. These cattle will perform, especially when put on feed.



# LASSLE RANCH SIMMENTALS

## LRS CBL 42L

73

BD: 3/12/23 • ASA#: 4256343 • Tattoo: 42L  
1/2 SM 1/2 AN • Homo Polled • Homo Black

LD CAPITALIST 316  
sire: **LRS TYCOON 120H**  
LRS MS CLASS ACT 437B  
WS PROCLAMATION E202  
dam: **CBL MS PROCLAMATION H50**  
CBL MS ARSENAL F408



Act. BW	76
BW Ratio	100
Adj WW	592
WW Ratio	96
Adj YW	1315
YW Ratio	112
WDA	3.37
ADG	4.56
Adj SC	36.5

Rank	CE	BW	WW	YW	ADG	MCE	Milk	STAY	DOC	CW	Marb	BF	REA	API	TI
	12.9	1.8	92.4	153.8	0.38	7.1	27.8	16.5	13.9	62.4	0.41	-0.008	0.55	144.8	89.9
	45	80	10	3	3	45	20	30	30	2	40	90	75	30	20

Gaining over 4.5 lbs a day and ratioed 112 for YW. Should definitely sire the feeding kind.

## LRS 9160L

74

BD: 3/8/23 • ASA#: 4199832 • Tattoo: 9160L  
PB SM • Homo Polled • Homo Black

ASR AMERICAN PATRIOT F843  
sire: **ASR AMERICAN PROUD H0301**  
ASR LITTLE DESI D6273  
LRS ELEVATE 213B  
dam: **LRS MS ELEVATE 9160G**  
LRS MS OLIE 078X



Act. BW	90
BW Ratio	106
Adj WW	667
WW Ratio	107
Adj YW	1220
YW Ratio	107
WDA	3.31
ADG	3.48
Adj SC	38.2

Rank	CE	BW	WW	YW	ADG	MCE	Milk	STAY	DOC	CW	Marb	BF	REA	API	TI
	9.5	0.3	76.5	127.0	0.32	4.1	29.3	16.6	6.7	45.0	0.43	-0.081	1.15	151.2	88.5
	75	30	55	30	10	80	10	40	95	10	15	30	10	20	20

Here is another bull that should definitely sire the feeding kind with his individual performance combined with his REA and Marbling scores.

## LRS 996L

75

BD: 3/11/23 • ASA#: 4199856 • Tattoo: 996L  
5/8 SM 3/8 AN • Homo Polled • Homo Black

TEHAMA TAHOE B767  
sire: **LRS RARITY 983J**  
LRS MS EAGLE 983G  
HOOK'S BALTIC 17B  
dam: **LRS MS BALTIC 996G**  
LRS MS DENALI 207Z



Act. BW	86
BW Ratio	100
Adj WW	606
WW Ratio	97
Adj YW	1236
YW Ratio	109
WDA	3.29
ADG	3.97
Adj SC	34.9

Rank	CE	BW	WW	YW	ADG	MCE	Milk	STAY	DOC	CW	Marb	BF	REA	API	TI
	12.8	1.7	86.6	143.2	0.35	6.6	20.4	15.6	11.2	64.1	0.77	-0.039	0.86	160.8	95.3
	50	75	15	10	10	55	80	40	70	2	10	60	25	15	10

Little bit of a slow start coming off the summer dealing with hoppers and flies, but he is gaining like gangbusters and ratioing 109 for YW.

## LRS 9161L

76

BD: 3/8/23 • ASA#: 4199833 • Tattoo: 9161L  
1/2 SM 1/2 AN • Homo Polled • Homo Black

CCR PAY DIRT 2340C  
sire: **CCR POUNDER 2045F**  
CCR MS 707 COWBOY 4123B  
S A V RAINDANCE 6848  
dam: **LRS MS RAINDANCE 9161G**  
LRS MS OLIE 078X



Act. BW	94
BW Ratio	109
Adj WW	593
WW Ratio	95
Adj YW	1247
YW Ratio	109
WDA	3.31
ADG	4.12
Adj SC	38.2

Rank	CE	BW	WW	YW	ADG	MCE	Milk	STAY	DOC	CW	Marb	BF	REA	API	TI
	10.4	2.1	91.2	153.5	0.39	3.8	30.6	20.5	14.4	64.3	0.43	-0.058	0.79	151.1	90.3
	80	80	10	3	2	95	10	4	25	2	40	30	35	20	20

Here is another one who was a little behind at the start but really taking off on test. His young dam had a bull in the sale last year as well.



## LRS 751L

77

BD: 3/10/23 • ASA#: 4199788 • Tattoo: 751L  
3/4 SM 1/4 AN • Homo Polled • Homo Black

WERNER FLAT TOP 4136  
sire: **TJ FLAT IRON 259G**  
TJ 33Y  
LRS ELEVATE 213B  
dam: **LRS MS ELEVATE 6033D**  
LRS MS SHRPER IMAGE 324A



Act. BW	84
BW Ratio	ET
Adj WW	579
WW Ratio	ET
Adj YW	1128
YW Ratio	ET
WDA	3.06
ADG	3.46
Adj SC	35.9

Rank	CE	BW	WW	YW	ADG	MCE	Milk	STAY	DOC	CW	Marb	BF	REA	API	TI
	13.5	-0.3	80.5	125.1	0.28	6.7	29.4	19.9	-7.6	29.1	0.43	-0.002	0.63	151.4	86.0
	40	40	30	35	40	55	15	5	99	70	40	90	65	20	30

Flush brother to Lot 90. Flat Iron x Proclamation. The last two of these embryos we will have for sale out of the 6033D cow.



## LRS 962L

78

BD: 3/8/23 • ASA#: 4199847 • Tattoo: 962L  
1/2 SM 1/2 AN • Homo Polled • Homo Black

MUSGRAVE 316 STUNNER  
sire: **LRS CROSSFIT 4306J**  
LRS MS CLASS ACT 437B  
LRS ICONIC 303C  
dam: **LRS MS ICONIC 962G**  
LRS MS ADJUST 357A



Act. BW	90
BW Ratio	104
Adj WW	680
WW Ratio	109
Adj YW	1240
YW Ratio	109
WDA	3.40
ADG	3.53
Adj SC	37.7

Rank	CE	BW	WW	YW	ADG	MCE	Milk	STAY	DOC	CW	Marb	BF	REA	API	TI
	9.1	1.5	89.5	145.1	0.35	2.9	28.2	15.1	14.2	47.0	0.63	-0.004	0.78	148.1	93.7
	90	75	10	10	10	99	20	45	30	20	15	90	35	25	10

One of the larger framed bulls in the sale and will definitely add some payweight come weaning time.

79

# LRS 067L

BD: 3/26/23 • ASA#: 4199565 • Tattoo: 067L  
1/2 SM 1/2 AN • Homo Polled • Homo Black

MUSGRAVE 316 STUNNER

sire: **DB ICONIC G95**

DB MS DISCOVERY D13

NLC GEN TEN 82E

dam: **LRS MS NOODLES 067H**

LRS MS JOY 661D



Act. BW	92
BW Ratio	109
Adj WW	737
WW Ratio	108
Adj YW	1291
YW Ratio	107
WDA	3.56
ADG	3.52
Adj SC	38.2

Rank	CE	BW	WW	YW	ADG	MCE	Milk	STAY	DOC	CW	Marb	BF	REA	API	TI
9.5	1.4	97.5	155.5	0.36	3.9	27.0	14.5	15.2	62.0	0.79	-0.003	0.80	159.2	102.2	
85	70	3	3	10	90	25	50	20	3	5	90	35	15	2	

Another one of Harper's bulls in the sale. She calls this one Ravioli. She can come up with some great names and it is never dull when shes around. DB Iconic half Blood that is also a larger framed bull that ratioed 107 at WW and 108 at a year. Combine that with excellent marbling prediction and his calves will perform.

81

# LRS 985L

BD: 3/3/23 • ASA#: 4199854 • Tattoo: 985L  
1/2 SM 1/2 AN • Homo Polled • Homo Black

CCR PAY DIRT 2340C

sire: **CCR POUNDER 2045F**

CCR MS 707 COWBOY 4123B

LRS ICONIC 303C

dam: **LRS MS ICONIC 985G**

LRS MS RANGE BOSS 662D



Act. BW	90
BW Ratio	104
Adj WW	662
WW Ratio	106
Adj YW	1309
YW Ratio	115
WDA	3.49
ADG	4.08
Adj SC	35.0

Rank	CE	BW	WW	YW	ADG	MCE	Milk	STAY	DOC	CW	Marb	BF	REA	API	TI
11.1	3.0	108.0	173.6	0.41	5.4	25.5	19.6	16.6	62.8	0.50	-0.049	0.68	157.7	100.0	
70	90	1	1	1	75	40	10	10	2	30	45	55	15	3	

Dam is a great young LRS Iconic daughter of the 303A cow who was a staple here forever. She is a sound structured good uddered female, Should be a great female maker.

82

# LRS CBL 25L

BD: 3/16/23 • ASA#: 4256337 • Tattoo: 25L  
3/4 SM 1/4 AN • Homo Polled • Homo Black

WS PROCLAMATION E202

sire: **BCLR MANIFESTO G352**

ELLIOTT MISS 352

LRS ELEVATE 213B

dam: **CBL MS ELEVATE F238**

CBL MS FULL POWER C45



Act. BW	90
BW Ratio	115
Adj WW	679
WW Ratio	110
Adj YW	1287
YW Ratio	110
WDA	3.56
ADG	3.83
Adj SC	35.2

Rank	CE	BW	WW	YW	ADG	MCE	Milk	STAY	DOC	CW	Marb	BF	REA	API	TI
7.8	3.6	109.1	174.3	0.41	3.6	30.6	12.6	13.1	67.7	0.58	-0.034	0.73	142.6	101.5	
95	95	1	1	1	95	10	70	40	1	20	60	45	35	2	

Larger framed Manifesto son who came off the cow ratioing 110 for WW and has kept it going during test.

83

# LRS CBL 51L

BD: 3/29/23 • ASA#: 4256348 • Tattoo: 51L  
3/4 SM 1/4 AN • Homo Polled • Homo Black

WS PROCLAMATION E202

sire: **BCLR MANIFESTO G352**

ELLIOTT MISS 352

GW ROBUST 605Z

dam: **CBL MS ROBUST C415**

ASCHE MS MSTR DESGN 22



Act. BW	88
BW Ratio	112
Adj WW	693
WW Ratio	113
Adj YW	1312
YW Ratio	112
WDA	3.65
ADG	3.89
Adj SC	36.9

Rank	CE	BW	WW	YW	ADG	MCE	Milk	STAY	DOC	CW	Marb	BF	REA	API	TI
6.4	4.6	101.3	151.4	0.31	2.1	28.4	16.0	18.0	72.3	0.45	-0.055	0.99	134.3	91.9	
99	99	1	4	25	99	20	35	4	1	35	30	15	50	15	

Manifesto calves are known for their performance and this one fits the bill with his individual performance combined with his 9 year old dams production record, she can raise big calves.

80

# LRS CBL 57L

BD: 3/22/23 • ASA#: 4256350 • Tattoo: 57L  
1/2 SM 1/2 AN • Homo Polled • Hetero Black

G A R ASHLAND

sire: **G A R HOME TOWN**

CHAIR ROCK SURE FIRE 6095

HOOK'S YELLOWSTONE 97Y

dam: **CBL MS YELLOWSTONE C455**

CBL MS SHARP IMAGE Z212



Act. BW	86
BW Ratio	108
Adj WW	666
WW Ratio	108
Adj YW	1264
YW Ratio	108
WDA	3.53
ADG	3.78
Adj SC	37.0

Rank	CE	BW	WW	YW	ADG	MCE	Milk	STAY	DOC	CW	Marb	BF	REA	API	TI
12.5	0.7	92.1	156.0	0.40	8.2	23.2	10.8	13.2	62.7	0.71	-0.052	0.75	152.8	99.0	
55	60	10	3	2	30	60	85	40	2	10	30	40	20	3	

Heterozygous Black. GAR Hometown son that is really performing. Big Scrotal bull with great ratios whose 9 year old dam has had multiple bulls make the sale pens over the years



GRACE EXHIBITED THE RESERVE CHAMPION STEER AT THE DAWSON COUNTY FAIR



Lot 82

84

# LRS 832L

BD: 3/7/23 • ASA#: 4199810 • Tattoo: 832L  
1/2 SM 1/2 AN • Homo Polled • Homo Black

CCR PAY DIRT 2340C

sire: **CCR POUNDER 2045F**

CCR MS 707 COWBOY 4123B

LRS ICONIC 303C

dam: **LRS MS ICONIC 832F**

LRS MS TIMTRAVELER 315A



Act. BW	96
BW Ratio	110
Adj WW	724
WW Ratio	118
Adj YW	1326
YW Ratio	120
WDA	3.67
ADG	3.79
Adj SC	38.7

Rank	CE	BW	WW	YW	ADG	MCE	Milk	STAY	DOC	CW	Marb	BF	REA	API	TI
10.0	6.2	111.8	173.9	0.39	5.2	31.0	13.6	17.1	57.5	0.19	-0.044	0.89	122.2	91.1	
85	99	1	1	2	80	10	60	10	5	80	45	20	70	15	

Big strong bull best suited for a group of mature cows. Over 1300 lbs at a year.

# LASSLE RANCH SIMMENTALS

## LRS 1186L

85

BD: 3/6/23 • ASA#: 4199585 • Tattoo: 1186L  
1/2 SM 1/2 AN • Homo Polled • Homo Black

MILL BRAE IDENTIFIED 4031

sire: **HF SAFE & SOUND 019**

HF EMPRESS 804

LRS BADLANDS 401F

dam: **LRS MS BADLANDS 1186J**

LRS MS CLASS ACT 437B

Act. BW	78
BW Ratio	98
Adj WW	642
WW Ratio	112
Adj YW	1160
YW Ratio	112
WDA	3.04
ADG	3.30
Adj SC	36.1



Rank	CE	BW	WW	YW	ADG	MCE	Milk	STAY	DOC	CW	Marb	BF	REA	API	TI
16.9	-1.0	87.4	142.6	0.35	10.8	31.2	16.3	11.5	56.1	0.77	-0.007	0.91	172.4	100.5	
10	30	15	10	10	5	10	30	65	5	10	90	20	4	2	

Might be the highest API bull in the sale. He checks a lot of EPD boxes. Dam is a full sister to the Fastball bull we ended up keeping a couple years ago referenced in lot 53. Hails directly from the 078X/437B cow family.

## LRS 9154L

87

BD: 3/4/23 • ASA#: 4199828 • Tattoo: 9154L  
5/8 SM 3/8 AN • Homo Polled • Homo Black

CCR PAY DIRT 2340C

sire: **CCR POUNDER 2045F**

CCR MS 707 COWBOY 4123B

HOOK'S EAGLE 6E

dam: **LRS MS EAGLE 9154G**

LRS MS DUAL FOCUS 213Z

Act. BW	82
BW Ratio	96
Adj WW	656
WW Ratio	105
Adj YW	1198
YW Ratio	105
WDA	3.27
ADG	3.42
Adj SC	34.5



Rank	CE	BW	WW	YW	ADG	MCE	Milk	STAY	DOC	CW	Marb	BF	REA	API	TI
13.9	1.0	98.7	158.3	0.37	7.9	30.3	13.5	18.4	51.0	0.58	-0.051	0.80	153.6	100.0	
35	65	2	2	4	35	10	65	4	10	20	30	35	20	3	

Seems like these pounder sons are all in the group that ratioed over 100 for WW and YW. His dam's first two sons also made the sale pens.

## LRS 9162L

89

BD: 3/6/23 • ASA#: 4199834 • Tattoo: 9162L  
1/2 SM 1/2 AN • Homo Polled • Homo Black

MUSGRAVE 316 STUNNER

sire: **DB ICONIC G95**

DB MS DISCOVERY D13

LRS ELEVATE 213B

dam: **LRS MS ELEVATE 9162G**

LRS MS OLIE 078X

Act. BW	78
BW Ratio	90
Adj WW	600
WW Ratio	96
Adj YW	1189
YW Ratio	104
WDA	3.19
ADG	3.74
Adj SC	39.6



Rank	CE	BW	WW	YW	ADG	MCE	Milk	STAY	DOC	CW	Marb	BF	REA	API	TI
13.3	-1.7	87.8	145.0	0.36	4.7	27.3	18.0	12.4	44.3	0.74	-0.050	0.78	171.9	100.6	
40	20	15	10	10	85	25	15	50	25	10	45	35	4	2	

Stout square made DB Iconic F1 half blood. He did get sick on us this summer, but is catching right back up and ratioing 104 for YW

## LRS 5128L

91

BD: 3/9/23 • ASA#: 4199767 • Tattoo: 5128L  
1/2 SM 1/2 AN • Homo Polled • Homo Black

TEHAMA TAHOE B767

sire: **LRS RARITY 983J**

LRS MS EAGLE 983G

PA FULL POWER 1208

dam: **LRS MS FULL POWER 5128C**

LRS MS DAKOTA 559R

Act. BW	78
BW Ratio	89
Adj WW	585
WW Ratio	94
Adj YW	1065
YW Ratio	95
WDA	3.00
ADG	3.02
Adj SC	36.3



Rank	CE	BW	WW	YW	ADG	MCE	Milk	STAY	DOC	CW	Marb	BF	REA	API	TI
14.0	-3.0	72.3	114.6	0.26	4.1	28.8	19.7	10.7	30.7	0.63	-0.007	0.64	164.4	89.3	
35	10	65	55	50	90	15	10	75	65	15	90	60	10	20	

Heifer Bull. His full Power sired dam has done a great job over the years and sired by our top seller 2 years ago.



Lot 85

## LRS CBL 28L

86

BD: 3/15/23 • ASA#: 4256339 • Tattoo: 28L  
1/2 SM 1/2 AN • Homo Polled • Homo Black

G A R ASHLAND

sire: **G A R HOME TOWN**

CHAIR ROCK SURE FIRE 6095

WS PROCLAMATION E202

dam: **LRS MS PROCLAMATION 058H**

LRS MS ELEVATE 6033D

Act. BW	73
BW Ratio	97
Adj WW	614
WW Ratio	100
Adj YW	1254
YW Ratio	107
WDA	3.29
ADG	4.06
Adj SC	35.1



Rank	CE	BW	WW	YW	ADG	MCE	Milk	STAY	DOC	CW	Marb	BF	REA	API	TI
14.2	-0.5	83.2	136.1	0.33	9.1	22.4	9.0	11.4	66.4	0.80	-0.024	0.93	153.3	96.8	
30	35	25	15	15	20	65	95	65	2	5	70	20	20	5	

Hometown sired true F1 that is gaining over 4 lbs a day to ratio 107 at a year. His dam was a embryo calf and her full sister is the dam of lot 51.

## LRS CBL 39L

88

BD: 3/20/23 • ASA#: 4256341 • Tattoo: 39L  
5/8 SM 3/8 AN • Homo Polled • Homo Black

REDHILL 672X X004 231A

sire: **CLRS HOMELAND 327H**

CLRS ALWAYS XCELLENT

WS LIGHT SPEED E230

dam: **CBL MS LIGHT SPEED H360**

CBL MS NITE RIDE D66

Act. BW	70
BW Ratio	93
Adj WW	612
WW Ratio	99
Adj YW	1201
YW Ratio	102
WDA	3.19
ADG	3.72
Adj SC	32.9



Rank	CE	BW	WW	YW	ADG	MCE	Milk	STAY	DOC	CW	Marb	BF	REA	API	TI
15.0	0.4	84.2	133.0	0.30	9.8	22.1	23.8	10.6	30.7	0.79	-0.040	0.78	182.0	96.5	
25	55	20	20	30	15	70	1	75	65	5	60	35	2	5	

Top of the breed for both Stayability and API. Daughters should be his strongest attribute.

## LRS 9133L

90

BD: 3/7/23 • ASA#: 4199822 • Tattoo: 9133L  
3/4 SM 1/4 AN • Homo Polled • Homo Black

WERNER FLAT TOP 4136

sire: **TJ FLAT IRON 259G**

TJ 33Y

LRS ELEVATE 213B

dam: **LRS MS ELEVATE 6033D**

LRS MS SHRPER IMAGE 324A

Act. BW	94
BW Ratio	ET
Adj WW	607
WW Ratio	ET
Adj YW	1147
YW Ratio	ET
WDA	3.13
ADG	3.41
Adj SC	34.2



Rank	CE	BW	WW	YW	ADG	MCE	Milk	STAY	DOC	CW	Marb	BF	REA	API	TI
13.8	1.5	79.3	113.2	0.21	6.9	29.4	18.5	1.1	32.1	0.48	-0.015	0.75	145.9	83.8	
35	75	35	60	85	50	15	99	60	30	85	40	30	85	40	

Flush brother to lot 77. We have some Flat Iron daughters getting into production and they sure seem to have nice udders on them and are sensible in their mature cow size.

92

# LRS 050L

BD: 3/17/23 • ASA#: 4199560 • Tattoo: 050L  
PB SM • Homo Polled • Homo Black

ASR AMERICAN PATRIOT F843

sire: ASR AMERICAN PROUD H0301

ASR LITTLE DESI D6273

WS PROCLAMATION E202

dam: LRS MS PROCLAMATION 050H

LRS MS ELEVATE 6033D



Act. BW	78
BW Ratio	94
Adj WW	617
WW Ratio	99
Adj YW	1131
YW Ratio	99
WDA	3.01
ADG	3.24
Adj SC	37.2

Rank	CE	BW	WW	YW	ADG	MCE	Milk	STAY	DOC	CW	Marb	BF	REA	API	TI
15.6	-0.2	92.0	139.9	0.30	9.2	27.2	21.7	15.5	22.5	0.53	-0.056	0.71	179.2	100.3	
10	25	10	10	20	10	20	3	15	75	10	85	85	2	3	

Heifer bull. The dam of this bull is another Proclamation x 6033D daughter. That group of flush sisters all have a bull in the sale this year. Little larger framed and should add some added performance.

94

# LRS CBL 68L

BD: 4/3/23 • ASA#: 4256354 • Tattoo: 68L  
1/2 SM 1/2 AN • Homo Polled • Homo Black

HOOK'S ENCORE 65E

sire: NLC ZUGABE 11H

NLC F29 FOKKA

CONNELLY CAPITALIST 028

dam: CBL MS CAPITALIST F68

CBL MS INSIGHT D376

Act. BW	78
BW Ratio	99
Adj WW	600
WW Ratio	97
Adj YW	1209
YW Ratio	-
WDA	3.31
ADG	3.78
Adj SC	36.2

Rank	CE	BW	WW	YW	ADG	MCE	Milk	STAY	DOC	CW	Marb	BF	REA	API	TI
12.6	1.1	78.4	118.2	0.25	5.5	27.0	18.3	13.1	37.8	0.29	-0.048	1.04	136.2	79.8	
50	65	40	45	60	75	25	15	40	40	65	45	10	45	55	

Just an April 3rd calf, he is just getting going. Time will be his bestfriend as well. Dam has a YW production ratio of 105 on her calves.

96

# LRS 1101L

BD: 3/4/23 • ASA#: 4199859 • Tattoo: 1101L  
5/8 SM 3/8 AN • Homo Polled • Homo Black

CCR ABILENE 6018C

sire: CCR WACO 4142G

CCR MS CATALYST 4142B

MUSGRAVE 316 STUNNER

dam: LRS MS STUNNER 1101J

LRS MS CLASS ACT 437B



Act. BW	88
BW Ratio	109
Adj WW	531
WW Ratio	92
Adj YW	1033
YW Ratio	99
WDA	2.63
ADG	3.19
Adj SC	34.0

Rank	CE	BW	WW	YW	ADG	MCE	Milk	STAY	DOC	CW	Marb	BF	REA	API	TI
12.1	0.3	76.4	131.5	0.34	4.0	25.1	12.2	9.8	47.5	0.68	-0.024	0.88	147.9	89.6	
60	50	45	25	10	90	40	75	85	15	15	70	25	25	20	

Out of a first calf heifer who is a full sister to the Crossfit bull, who has a group of bulls in this sale.

98

# LRS 958L

BD: 3/4/23 • ASA#: 4199846 • Tattoo: 958L  
PB SM • Homo Polled • Homo Black

ASR AMERICAN PATRIOT F843

sire: ASR AMERICAN PROUD H0301

ASR LITTLE DESI D6273

HOOK'S BALTIC 17B

dam: LRS MS BALTIC 958G

LRS MS DUAL FOCUS 213Z



Act. BW	88
BW Ratio	103
Adj WW	600
WW Ratio	96
Adj YW	1126
YW Ratio	99
WDA	3.03
ADG	3.32
Adj SC	38.5

Rank	CE	BW	WW	YW	ADG	MCE	Milk	STAY	DOC	CW	Marb	BF	REA	API	TI
13.7	-0.5	78.0	119.7	0.26	7.4	21.4	20.8	12.2	25.5	0.31	-0.046	1.10	158.3	86.4	
20	20	50	40	40	25	65	4	45	65	25	95	15	15	25	

Big Nutted purebred bull that traces back to the dam of LRS Elevate. Possible heifer bull if used on a larger set of heifers.

93

# LRS CBL 15L

BD: 3/10/23 • ASA#: 4256334 • Tattoo: 15L  
3/4 SM 1/4 AN • Homo Polled • Homo Black

KOCH BIG TIMBER 685D

sire: BRIDLE BIT GPS H078

BRIDLE BIT MISS F840

TSN VISIONARY G626

dam: CBL MS J11

CBL MS LIGHT SPEED G379



Act. BW	66
BW Ratio	91
Adj WW	617
WW Ratio	100
Adj YW	1115
YW Ratio	95
WDA	2.89
ADG	3.17
Adj SC	33.9

Rank	CE	BW	WW	YW	ADG	MCE	Milk	STAY	DOC	CW	Marb	BF	REA	API	TI
14.9	-3.0	84.6	126.0	0.26	7.9	20.5	16.8	9.8	32.8	0.53	-0.005	0.50	157.1	92.6	
25	10	20	30	50	35	80	25	85	55	25	90	85	15	15	

Heifer Bull. GPS sired heifer bull who scores with good stayability and MCE scores.

95

# LRS 976L

BD: 4/1/23 • ASA#: 4199850 • Tattoo: 976L  
3/4 SM 1/4 AN • Homo Polled • Homo Black

LRS BADLANDS 401F

sire: LRS FASTBALL 014J

LRS MS CLASS ACT 437B

LD CAPITALIST 316

dam: LRS MS CAPITALIST 316 976G

LRS MS TOPGRADE 331A



Act. BW	84
BW Ratio	97
Adj WW	662
WW Ratio	106
Adj YW	1144
YW Ratio	101
WDA	3.25
ADG	3.04
Adj SC	34.5

Rank	CE	BW	WW	YW	ADG	MCE	Milk	STAY	DOC	CW	Marb	BF	REA	API	TI
10.8	2.2	83.8	126.8	0.27	7.1	27.3	17.0	12.2	55.4	0.46	-0.059	1.14	140.8	85.8	
75	85	25	30	45	45	25	25	55	10	35	30	4	35	30	

Here is another April baby sired by Fastball. We did only get a handful of calves, but we sure do like how they turned out. Even with his age he ratioed over 100 for WW and YW.

97

# LRS 131L

BD: 3/1/23 • ASA#: 4199586 • Tattoo: 131L  
5/8 SM 3/8 AN • Homo Polled • Homo Black

CCR ABILENE 6018C

sire: CCR WACO 4142G

CCR MS CATALYST 4142B

TEHAMA TAHOE B767

dam: LRS MS TAHOE 131J

LRS MS PASQUE 732E



Act. BW	78
BW Ratio	98
Adj WW	599
WW Ratio	104
Adj YW	1076
YW Ratio	104
WDA	2.81
ADG	3.03
Adj SC	34.4

Rank	CE	BW	WW	YW	ADG	MCE	Milk	STAY	DOC	CW	Marb	BF	REA	API	TI
16.5	-1.9	81.8	123.7	0.26	9.7	24.5	15.4	11.0	29.7	0.66	-0.022	0.47	161.6	94.1	
15	20	30	35	50	15	45	40	70	65	15	70	85	10	10	

Could probably be a heifer bull if used on a larger framed set of heifers. Sired by the outcross Waco and out of a first calf heifer that is off to a good start.

99

# LRS 786L

BD: 3/20/23 • ASA#: 4199798 • Tattoo: 786L  
5/8 SM 3/8 AN • Homo Polled • Homo Black

S POWERPOINT 843

sire: KS POINT TAKEN H579

KS FANNIE F74

KS IRON MAN C477

dam: LRS MS IRON MAN 786E

LRS MS PREF STOCK 958W



Act. BW	82
BW Ratio	93
Adj WW	600
WW Ratio	96
Adj YW	1126
YW Ratio	97
WDA	3.15
ADG	3.32
Adj SC	39.4

Rank	CE	BW	WW	YW	ADG	MCE	Milk	STAY	DOC	CW	Marb	BF	REA	API	TI
18.0	-2.2	67.1	101.8	0.22	9.6	22.5	18.5	14.3	2.6	0.20	-0.017	0.29	139.1	74.1	
10	15	80	80	80	15	65	15	30	99	80	85	99	40	75	

Heifer Bull. Outcross pedigree for our longtime customers.

# LASSLE RANCH SIMMENTALS

## LRS 617L

100

BD: 4/1/23 • ASA#: 4199777 • Tattoo: 617L  
5/8 SM 3/8 AN • Homo Polled • Homo Black

THR HIGH POINT 8533F

sire: **LRS FIREBALL 3021H**

LRS MS TOPGRADE 3021A

J BAR J NIGHTRIDE 225Z

dam: **LRS MS NIGHTRIDE 617D**

LRS MS ADJUSTER 333A



Act. BW	90
BW Ratio	103
Adj WW	654
WW Ratio	107
Adj YW	1080
YW Ratio	97
WDA	3.14
ADG	2.68
Adj SC	35.5

Rank	CE	BW	WW	YW	ADG	MCE	Milk	STAY	DOC	CW	Marb	BF	REA	API	TI
	10.7	2.2	83.2	130.9	0.30	5.9	24.1	16.4	14.8	21.0	0.46	-0.030	0.22	138.7	84.2
75	85	25	25	30	70	50	30	25	90	35	70	99	40	40	35

Another really young calf who ratioed 107 off the cow. These April calves will not even be 10 months old on sale day.



GRACE AND LRS MS BOONE 226K

## LRS CBL 13L

101

BD: 3/10/23 • ASA#: 4256333 • Tattoo: 13L  
3/4 SM 1/4 AN • Homo Polled • Homo Black

HOOK'S EAGLE 6E

sire: **LRS FALCON 442G**

LRS MS CLASS ACT 437B

LRS FULL TIME 328C

dam: **CBL MS FULL TIME F668**

CBL MS IN SURE B184



Act. BW	72
BW Ratio	91
Adj WW	583
WW Ratio	95
Adj YW	1112
YW Ratio	95
WDA	3.04
ADG	3.33
Adj SC	34.9

Rank	CE	BW	WW	YW	ADG	MCE	Milk	STAY	DOC	CW	Marb	BF	REA	API	TI
	13.3	1.1	91.2	150.1	0.37	5.0	26.0	20.0	15.0	55.6	0.32	-0.049	0.74	148.9	88.4
40	65	10	4	4	80	35	5	20	10	55	45	45	25	25	25

The Falcon sired calves bring real genetic merit to their progeny with a great balance of calving ease and birthweight combined with adequate growth.

## LRS 929L

102

BD: 3/19/23 • ASA#: 4199840 • Tattoo: 929L  
5/8 SM 3/8 AN • Homo Polled • Homo Black

WS PROCLAMATION E202

sire: **307 BACKROADS 736G**

PANNELL MISS 736

RBS BOISE B63

dam: **LRS MS BOISE 929G**

LRS MS NIGHTRIDE 702E

Act. BW	76
BW Ratio	88
Adj WW	576
WW Ratio	92
Adj YW	984
YW Ratio	86
WDA	2.77
ADG	2.58
Adj SC	38.3

Rank	CE	BW	WW	YW	ADG	MCE	Milk	STAY	DOC	CW	Marb	BF	REA	API	TI
	16.1	-1.5	62.1	84.1	0.14	10.1	27.0	14.8	11.5	7.9	0.33	-0.048	0.75	132.1	73.9
15	25	90	99	99	10	25	50	65	99	55	45	40	50	75	75

Heifer bull. Dams 2 other calves have also been bulls and went through the sale.

## LRS 074L

103

BD: 3/23/23 • ASA#: 4199568 • Tattoo: 074L  
1/2 SM 1/2 AN • Homo Polled • Homo Black

MUSGRAVE 316 STUNNER

sire: **DB ICONIC G95**

DB MS DISCOVERY D13

NLC GEN TEN 82E

dam: **LRS MS GEN TEN 074H**

LRS MS CLASS ACT 445B



Act. BW	86
BW Ratio	102
Adj WW	653
WW Ratio	105
Adj YW	1259
YW Ratio	110
WDA	3.38
ADG	3.85
Adj SC	35.1

Rank	CE	BW	WW	YW	ADG	MCE	Milk	STAY	DOC	CW	Marb	BF	REA	API	TI
	11.9	0.2	93.0	153.4	0.38	4.8	26.5	17.6	13.7	50.5	0.84	0.019	0.50	171.9	102.3
60	50	5	3	3	85	30	20	35	15	4	99	85	4	2	2

Later March calf that is really performing ratioing ratioing 105 at WW and 110 for YW. His young dam is off to a great start with a YW ratio of 114 on her first 2 calves

## LRS CBL 66L

104

BD: 3/28/23 • ASA#: 4256353 • Tattoo: 66L  
1/2 SM 1/2 AN • Homo Polled • Homo Black

TEHAMA TAHOE B767

sire: **TNT FORT PECK J428**

TNT MISS G182

LRS BADLANDS 401F

dam: **CBL MS J211**

CBL MS ELEVATE E427



Act. BW	74
BW Ratio	102
Adj WW	587
WW Ratio	95
Adj YW	1086
YW Ratio	93
WDA	2.83
ADG	3.17
Adj SC	35.3

Rank	CE	BW	WW	YW	ADG	MCE	Milk	STAY	DOC	CW	Marb	BF	REA	API	TI
	15.0	-0.7	80.2	125.8	0.28	8.3	26.5	14.5	13.1	45.8	0.59	-0.017	0.50	151.7	89.9
25	35	35	30	40	30	30	50	40	20	20	85	85	20	20	20

Potential heifer bull. First calf Heifer did a nice job with this bull, again a very end of March calf where time will be a valuable asset. Very balanced in his genetic profile.

## LRS 197L

105

BD: 3/2/23 • ASA#: 4199595 • Tattoo: 197L  
5/8 SM 3/8 AN • Homo Polled • Homo Black

CCR ABILENE 6018C

sire: **CCR WACO 4142G**

CCR MS CATALYST 4142B

LRS BADLANDS 401F

dam: **LRS MS BADLANDS 197J**

LRS MS NIGHTRIDE 529C



Act. BW	78
BW Ratio	98
Adj WW	606
WW Ratio	105
Adj YW	1059
YW Ratio	102
WDA	2.75
ADG	2.87
Adj SC	32.9

Rank	CE	BW	WW	YW	ADG	MCE	Milk	STAY	DOC	CW	Marb	BF	REA	API	TI
	16.0	-3.9	72.8	106.6	0.21	9.9	23.2	13.1	8.9	28.3	0.90	-0.012	0.65	169.0	96.8
15	5	60	70	85	10	60	65	90	70	3	85	60	10	5	5

Heifer bull. These Badlands daughters are doing a great job on our operation and this Heifer bull ratioed over 100 for both WW and YW.



## LRS KING 814L

106

BD: 3/7/23 • ASA#: 4199808 • Tattoo: 814L  
1/2 SM 1/2 AN • Homo Polled • Homo Black

TEHAMA TAHOE B767

sire: **LRS RARITY 983J**

LRS MS EAGLE 983G

MCCONNELL ALTITUDE 3114

dam: **LRS MS BAILEY 814F**

LRS MS ELEVATE 6021D



Act. BW	84
BW Ratio	96
Adj WW	629
WW Ratio	92
Adj YW	1117
YW Ratio	93
WDA	3.13
ADG	3.08
Adj SC	36.2

Rank	CE	BW	WW	YW	ADG	MCE	Milk	STAY	DOC	CW	Marb	BF	REA	API	TI
	13.4	-1.4	79.6	129.2	0.31	6.7	27.6	17.7	15.9	50.2	0.74	0.003	0.79	165.9	94.3
40	25	35	25	25	55	25	20	15	15	10	95	35	10	10	

Grace's last bull in the sale out of her favorite cow. She consistently sires calves more moderate in frame score, but thick, thick, thick and she has been an excellent producer.

## LRS 170L

107

BD: 3/21/23 • ASA#: 4199864 • Tattoo: 170L  
5/8 SM 3/8 AN • Homo Polled • Homo Black

CCR POUNDER 2045F

sire: **CCR VARSITY 4112H**

CCR MS FRONTIER 4112B

TEHAMA TAHOE B767

dam: **LRS MS TAHOE 170J**

LRS MS ELEVATE 6020D



Act. BW	84
BW Ratio	105
Adj WW	575
WW Ratio	100
Adj YW	898
YW Ratio	86
WDA	2.44
ADG	2.07
Adj SC	37.0

Rank	CE	BW	WW	YW	ADG	MCE	Milk	STAY	DOC	CW	Marb	BF	REA	API	TI
	14.7	-0.4	77.8	111.7	0.21	8.2	28.8	20.8	17.1	26.3	0.54	0.008	0.44	157.3	86.1
25	40	40	60	85	30	15	3	10	75	25	95	90	15	30	

Out of a first calf heifer from a proven cow family. Grandam was a donor cow and the varsity calves are very sound and eye appealing.

## LRS 1180L

108

BD: 3/5/23 • ASA#: 4199583 • Tattoo: 1180L  
5/8 SM 3/8 AN • Homo Polled • Homo Black

CCR ABILENE 6018C

sire: **CCR WACO 4142G**

CCR MS CATALYST 4142B

MUSGRAVE 316 STUNNER

dam: **LRS MS STUNNER 1180J**

LRS MS TOPGRADE 3015A



Act. BW	86
BW Ratio	107
Adj WW	561
WW Ratio	97
Adj YW	1038
YW Ratio	100
WDA	2.69
ADG	3.03
Adj SC	35.6

Rank	CE	BW	WW	YW	ADG	MCE	Milk	STAY	DOC	CW	Marb	BF	REA	API	TI
	16.3	-2.7	64.5	105.2	0.25	9.1	26.2	14.8	15.4	29.3	0.89	0.009	0.35	167.8	90.2
15	10	90	75	60	20	35	50	20	70	3	95	95	10	20	

Heifer bull. Waco sired heifer bull out of a bigger framed, long sided Stunner cow who has a great udder. His Dam's was part of a great flush a few years ago where the flush brothers were sale highlights in 2022.

## LRS 965L

109

BD: 3/12/23 • ASA#: 4199848 • Tattoo: 965L  
5/8 SM 3/8 AN • Homo Polled • Homo Black

CCR PAY DIRT 2340C

sire: **CCR POUNDER 2045F**

CCR MS 707 COWBOY 4123B

LRS ICONIC 303C

dam: **LRS MS ICONIC 965G**

LRS MS DUAL FOCUS 213Z



Act. BW	82
BW Ratio	95
Adj WW	588
WW Ratio	94
Adj YW	1026
YW Ratio	90
WDA	2.86
ADG	2.77
Adj SC	38.0

Rank	CE	BW	WW	YW	ADG	MCE	Milk	STAY	DOC	CW	Marb	BF	REA	API	TI
	16.6	-0.4	81.7	121.8	0.25	10.0	27.5	18.5	15.8	31.9	0.43	-0.024	0.46	152.1	86.7
15	40	30	40	60	10	25	15	15	60	40	70	90	20	30	

The last Pounder in the sale. His progeny do so many things right from being sound, combined with the cowboy traits like MCE, Docility, and Stability.

## LRS CBL 26L

110

BD: 3/15/23 • ASA#: 4256338 • Tattoo: 26L  
1/2 SM 1/2 AN • Homo Polled • Homo Black

TEHAMA TAHOE B767

sire: **LRS RARITY 983J**

LRS MS EAGLE 983G

LRS 810Z

dam: **CBL MS 810Z D526**

CBL MISS TOUCHDOWN X70



Act. BW	78
BW Ratio	99
Adj WW	593
WW Ratio	96
Adj YW	954
YW Ratio	81
WDA	2.79
ADG	2.28
Adj SC	34.1

Rank	CE	BW	WW	YW	ADG	MCE	Milk	STAY	DOC	CW	Marb	BF	REA	API	TI
	14.2	-1.2	70.2	108.6	0.24	7.4	27.1	15.6	14.3	35.9	0.42	-0.019	0.56	140.0	80.2
30	25	70	65	65	40	25	40	30	45	40	85	75	40	50	

Someone always has to be last. This bull got hurt during test and fell a little behind but is catching back up. We started with 983G sons in the sale and are ending with this 983G grandson. Proven genetics on the top side from a productive 8 year old cow.



HARPER AND REX AT THE DAWSON COUNTY FAIR

# Thank You!

We need to thank our family and friends that help throughout the year whenever we call and ask...

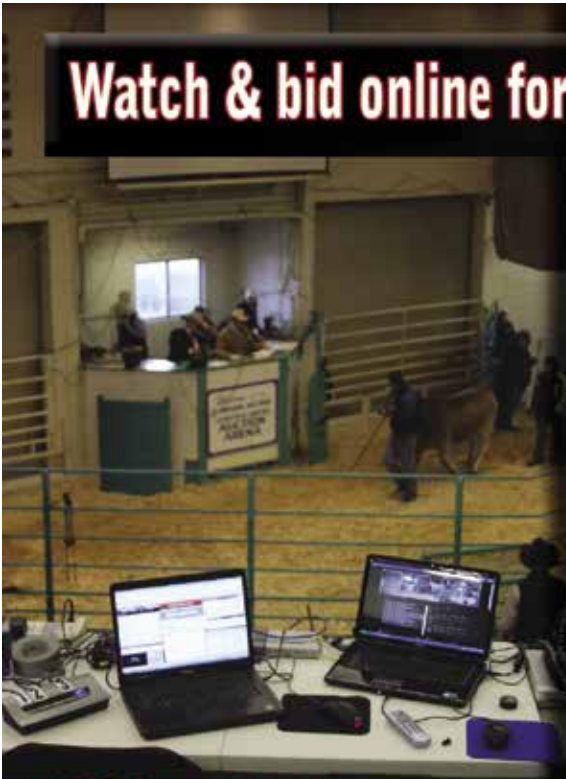
Lyle Armstrong, Gary Miller, Jim Trangmoe, Dave Barnick, Alan Mcrae, Doug Goroski, and Gary Arneson. Arvid Corneliusen and Melvin Gaub for helping take care of fences and keeping an eye on the cows and calves all summer. Thanks to Vic's Vittles and Jacob Lundstrum for the great meals. The crew at Bravera Bank.

Kristin Aus, Marta Asche, Lavonne Hoffer for helping clerk on sale day. Will Malcolm and Sleeping Giant Genetics for the embryo work. Bobby Wellner Cattle Services for clipping bulls. Rod and Marta Asche (Cracker Box Livestock) for being a great partner on some of the bulls in the sale. CHS Farmers Elevator for sponsoring the sale day meal. And last but not least, Emily Brinkman at Generation 6 Marketing for not only the catalog but assisting with all our ads and marketing efforts.

# LASSLE RANCH SIMMENTALS

Watch & bid online for **FREE** at

**DVAuction**  
Broadcasting Real-Time Auctions



Can't make the sale? Bid from home with DV Auction's "real-time" internet bidding service!

Buying online is as easy as 1, 2, 3...

1. Create an account at [www.dvauction.com](http://www.dvauction.com) under the "register" tab
2. Apply for bidding approval by clicking on the "details" tab at least 24 hours prior to the auction-a DV representative will notify you once you have been approved
3. Tune in for the sale and make your purchases!



After the sale, contact the sale manager or owner to arrange transportation and payment. **High speed internet** is required for successful bidding-be sure to check the lag-time monitor in the top left corner to ensure real-time broadcasts.

**Proxy Bidding**-if you can't make time to watch the sale, register a proxy bid and let our system represent your bid while you're away. Look for the "proxy bid" tab on the auction listing, and fill in your maximum bids. We'll handle the rest!

**Having troubles?** During the auction, you can type a message to the operator at any time for assistance. Our full-time support team can also always be reached at (402) 474-5557.

**DVAuction**  
Broadcasting Real-Time Auctions

Full Service Livestock Marketing

Video - Photography - The Stock Exchange - Ring Service - Banner Ads - Onsite Viewing Service

## HOW DOES A GENOMIC TEST BENEFIT OUR CUSTOMERS?

We have been doing Genomic testing here at LRS for years and taking advantage of all the programs available through the American Simmental Association. Our entire cowherd and every calf born here gets a genomic test – even the culls. **Every bull that sells has genomically enhanced EPD's.** This does not replace phenotypic data, it enhances it. We still collect all the phenotypic traits that we can: Birthweight, Calving ease, weaning weights, yearling weights, Mature Cow weights every fall, Body condition scores, individual carcass data. The phenotypic data is irreplaceable and essential to work hand in hand with the DNA samples to enhance their EPD's.

**How does it benefit you:** It creates a more accurate prediction with a higher accuracy EPD because it combines not only the animals phenotypic data (BW, CE, WW, YW etc..) and pedigree, but also takes into account what gene markers the animal has that science has proven to affect certain traits. It also provides parentage verification so you can be assured the parentage is right. It is like getting an entire calf crop worth of information for bulls, before they even breed a cow.

TRAIT	PROGENY	TRAIT	PROGENY
Calving ease	25+	Stayability	15
Maternal calving ease	4	Carcass weight	6
Birth weight	22	Marbling	10
Weaning weight	25+	Ribeye area	8
Yearling weight	25+	Back fat	11
		Docility	25+

## IMPROVED BUYING CONFIDENCE WITH GREATER GENOMIC ASSURANCE

The 3 Accreditation Logos below are designed to simplify bull selection and improve buyer confidence by more accurately describing the genetics offered and by reducing risk. What this means to you as a customer is a much greater assurance that you are getting both what you want and need from the genetics you purchase. What it means to your seedstock provider is access to RightMate technology that simply sets them apart from the rest of the industry.

**ACCREDITED CALVING EASE** – Simply find bulls with the ACE logo for third party Accredited, secure Calving Ease bulls. Though we have had tools in the past to assist in choosing heifer bulls, we've never had one nearly this effective. The reduced risk that comes with this genomic certification will simply make your decisions easier and your heifer calving season more successful. Purchase special purpose ACE bulls with confidence. They will deliver consistent and predictable calving ease.



**ACCREDITED TERMINAL MATE** – Just like an ATM machine makes it simpler to access your cash, the ATM Logo highlights bulls accredited to generate extra cash income as soon as your next calf crop! These bulls are meant specifically to use only on mature cows and for the purpose of adding performance, pay weight and end product value to market.



**ACCREDITED GENOMIC PLUS** – For the majority of producers who simply need consistent and balanced genetic improvement, without genomic setbacks, G+ Accredited bulls should be on your list for premium purchase. These sires will absolutely move you forward for both cost reduction and income producing traits and substantially reduce risk when compared to all other evaluation programs. It's simple, the right genes are in these bulls to help secure a profitable future and the they have great EPDs to match!



**RightMate**  
powered by TOP GENOMICS

# Terms & Conditions

## TERMS AND CONDITIONS

1. Terms of the sale are cash or check at the time of the sale unless other arrangements are made prior to sale.
2. Each animal becomes the property of and therefore is also the risk of the purchaser as soon as it is sold; except it shall be the obligation of the seller to see that animals are fed and cared for free of charge to purchaser, until loaded for shipment or until the expiration of twenty-four hours after the sale, whichever occurs first. We guarantee the cattle to be healthy sale day.
3. We will abide by the rules set forth by the American Simmental Association.
4. As we have no control over the acts of God, we cannot guarantee these cattle against death loss, injury or sickness. We guarantee cattle to be healthy sale day.
5. Every animal selling is guaranteed be free of all known genetic defects at the time of the sale either by know genetic defect free pedigree or by negative DNA test. Lassle Ranch Simmentals is not liable for any genetic defects not recognized by the ASA or such defect that has no available commercial DNA test at the time of the sale.

We will keep the website updated with any information we get between the time the catalog goes to print and sale day.  
[www.lassleranchsimmentals.com](http://www.lassleranchsimmentals.com)

Cattle are available for your inspection any time. Feel free to come ahead of sale day.

## BUYER VOLUME DISCOUNTS

We will be offering Discounts for volume bull buyers:

- 3 head - 3%
- 4 head - 4%
- 5 or more head 5%

## ANNOUNCEMENTS

All announcements and changes made by the auctioneer will take precedence over printed material. Anyone attending the sale attends at their own risk. Lassle Simmentals or any of the sale force will not be responsible for any personal injury or loss for attending the sale.

## SIGHT UNSEEN PURCHASES

We guarantee all sight unseen purchases. Call ahead of time and we will go over the offering. You can leave a bid with us or a representative. You will be treated as if you are here. A video of sale cattle is available on [www.lassleranchsimmentals.com](http://www.lassleranchsimmentals.com)

## DELIVERY

We will offer free delivery within 400 mile radius of Glendive, MT. Other delivery arrangements will be made as economically as possible, based upon the volume of the purchase.

## AFTER SALE CARE

\$100.00 off cattle that are taken sale day. Free feed on any bull until the first of April. On the bulls that we winter, we will have them fertility tested and fertility certificates issued. Insurance will be available sale day - we encourage you to insure bulls that we winter.

## SEMEN INTEREST

Lassle Ranch Simmentals is selling all bulls in their entirety. Full possession, and 100% semen interest in all bulls will be sold. Lassle Ranch Simmentals does reserve the right to in herd use semen on any bull in the sale, at the cost of collection. Should the need arise for us to collect semen on a bull in your possession, it would be done at our expense and your convenience

## FULL PURCHASE VALUE EXTENDED WARRANTY ON SALE BULLS

Every bull selling carries a 100% guarantee extended warranty for one breeding season provided the bull is managed properly and acceptable nutritional physical health. In the event a customer has any problem in with a bull (health, injury or death) prior to or during the bulls first breeding season the customer should immediately contact Lassle Ranch Simmentals to report a claim. A veterinarian's statement of the problem will be required and Lassle Ranch reserves the right to have the bull returned if deemed necessary. A replacement bull of mutually agreed upon quality will be provided if Lassle Ranch has one available. In the event a satisfactory replacement is not available, the customer will be given a full credit (minus salvage value) to be used in a future Lassle Ranch Sale. LRS will not be held responsible under any circumstances for any settlement amount exceeding the purchase price of bull. No one can guarantee that every animal will perform perfectly, but at Lassle Ranch Simmentals we can guarantee that we will make things right if they do not.

## TESTICLE MEASUREMENTS

The scrotal circumference of each bull was tape-measured the week before Christmas while clipping the bulls. The scrotal measurement were adjusted to yearling and sometimes will vary one way or another as actual yearlings. We guarantee our bulls 100% for fertility - unless damage is induced at your ranch - and then it's out of our control.

## RECOMMENDATIONS FOR SCROTAL CIRCUMFERENCE

MONTHS OF AGE	12-14	15-20	21-30	30+
SCROTAL CM	35	37	39	40 - EXCELLENT
	30-35	31-37	32-39	33-40 - GOOD
	30	31	32	33 - POOR

## SUGGESTED GUIDELINES FOR USING YEARLING BULLS

We are firm believers in the use of yearling bulls and feel it is one of the best years of their lives. It is a time when they are easy to manage and their only concern is breeding cows. We have found that yearling bulls that are managed carefully during the second year of their lives, not only do well, but they will perform better over time. Below are some suggested guidelines for the care of yearling bulls.

- Upon deliver to your ranch, keep yearling bulls separate from older bulls and feed them a maintenance ration of 5-8 lbs per head of grain and free choice hay. Reduce the amount of grain fed gradually, so that bulls are on straight hay or grass 2-4 weeks prior to the breeding season.
- Where possible try to limit the bulls and put them in separate pastures with plenty of good quality grass. It is best to achieve the growth and strength to compete with older bulls for feed and space.
- You will see the benefit of a little added cost and care of feeding a yearling bull by probably two or three more years of service from a well managed and healthy bull.

## UNDERSTANDING LOT NUMBER COLOR CODES

Green Ear Tags - Purebred Simmental Bulls

Blue Ear Tags - 3/4 Simmental

Yellow Ear Tags - 5/8 or 1/2 Simmentals

Catalog designed by



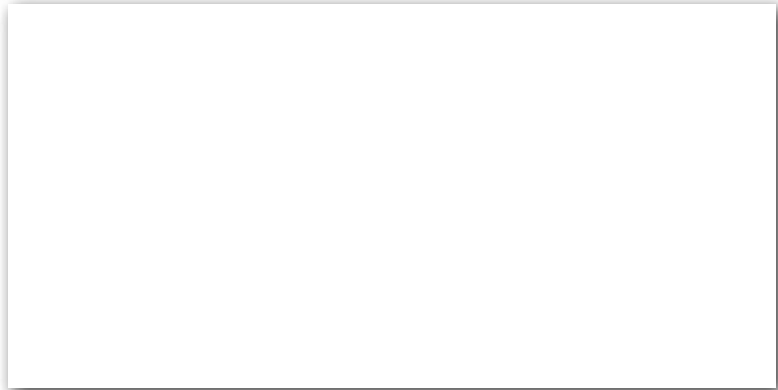
[www.generation6.co](http://www.generation6.co)

# LRS

LASSLE RANCH SIMMENTALS



LASSLE RANCH SIMMENTALS  
42 ROAD 245  
GLEN DIVE, MT 59330



**JOIN US FOR OUR 31<sup>ST</sup> ANNUAL BULL SALE!**  
**FEBRUARY 8, 2024 AT THE RANCH**

**Selling 110 Simmental & SimAngus Bulls**

FREE DELIVERY • BULLS AVAILABLE TO VIEW ANYTIME  
SIGHT UNSEEN & FIRST YEAR BREEDING SEASON GUARANTEES